

Bachelor-Thesis an der Hochschule Luzern - Technik & Architektur

Titel **Architektur im Wandel der Zeit: Der Geist von Langenthal und die Faszination des Umbaus**

Diplomandin/Diplomand **Rugova, Albijona**

Bachelor-Studiengang **Bachelor Architektur**

Semester **FS23**

Dozentin/Dozent **Wülser, Stefan**

Expertin/Experte **Baumgartner, Marianne**

Abstract Deutsch

Klicken oder tippen Sie hier, um Text einzugeben.

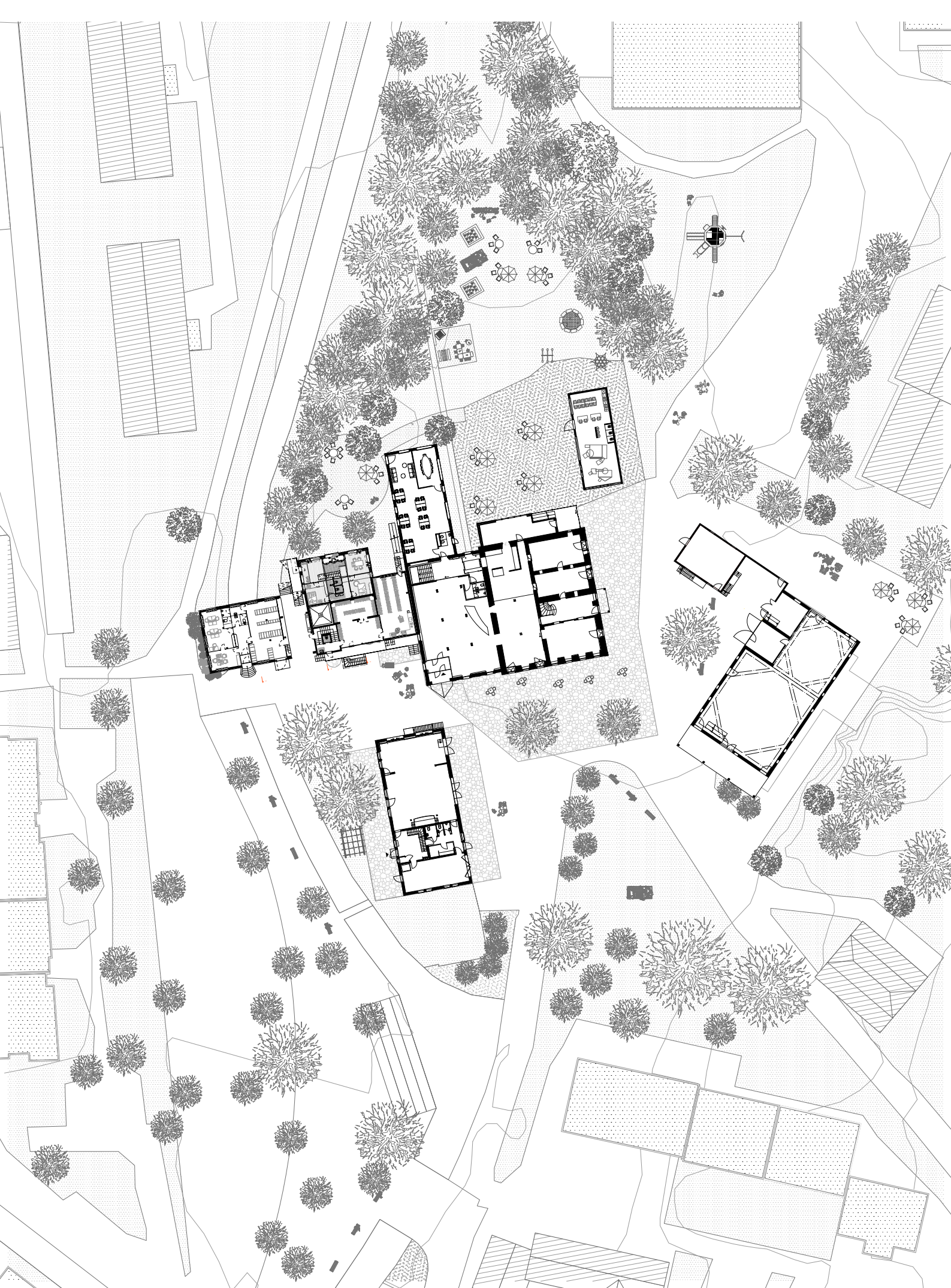
Abstract Englisch

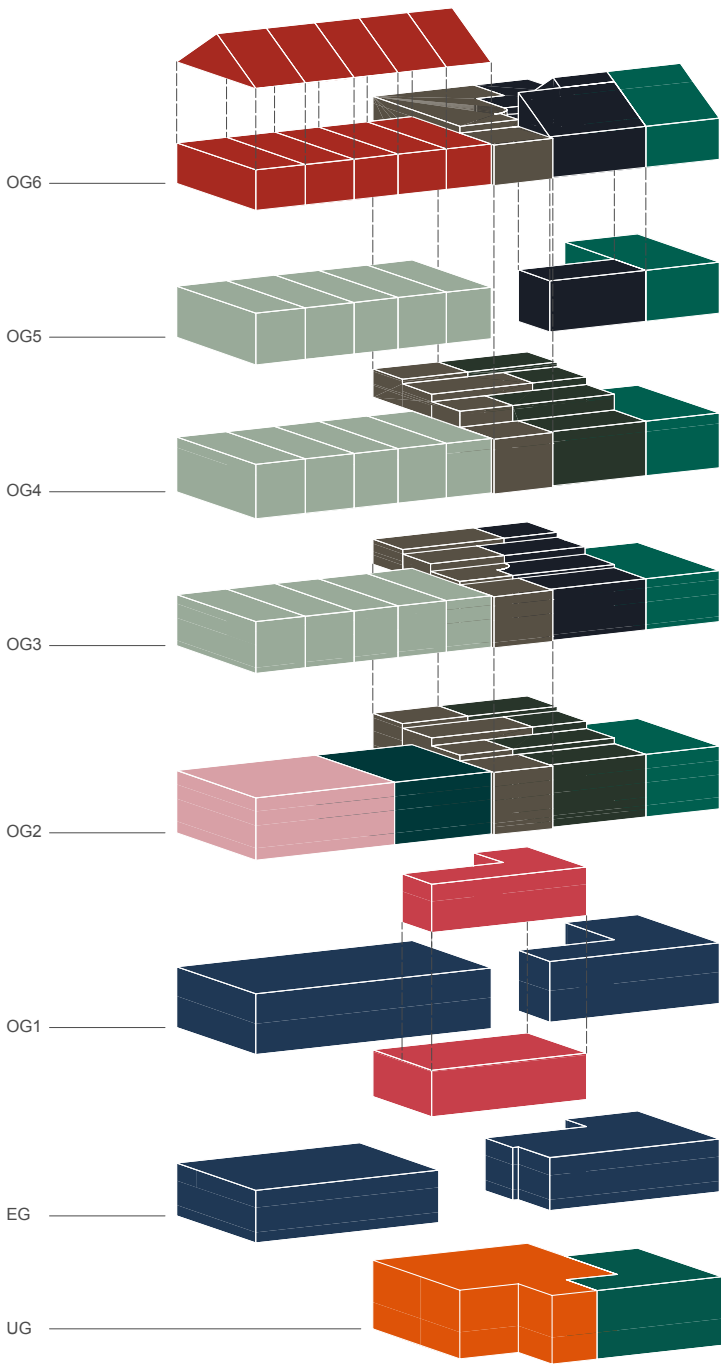
Klicken oder tippen Sie hier, um Text einzugeben.

Ort, Datum

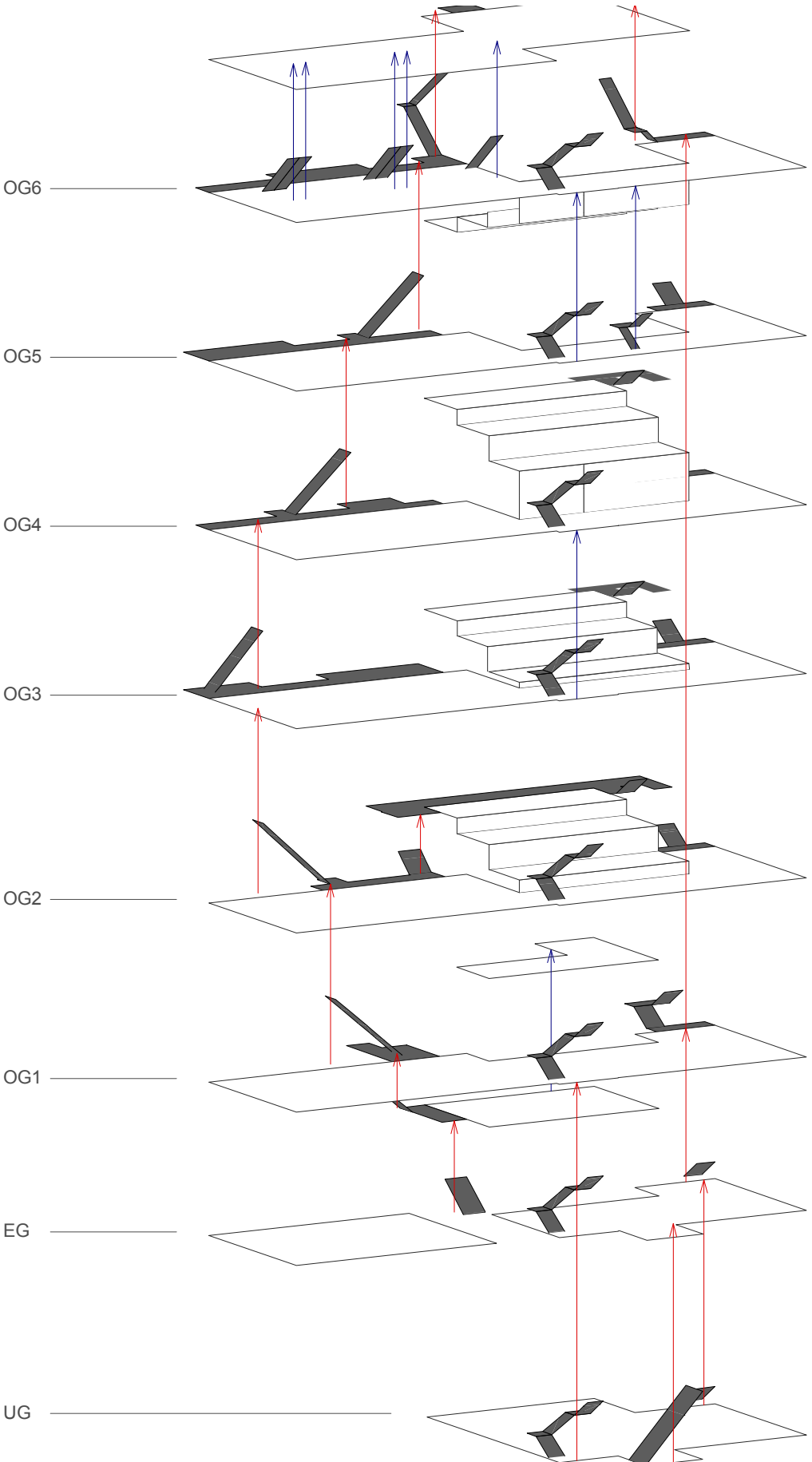
16. Juni 2023

© **Albijona Rugova, Hochschule Luzern – Technik & Architektur**



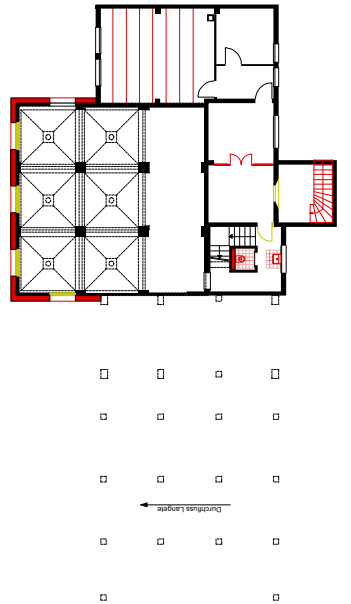
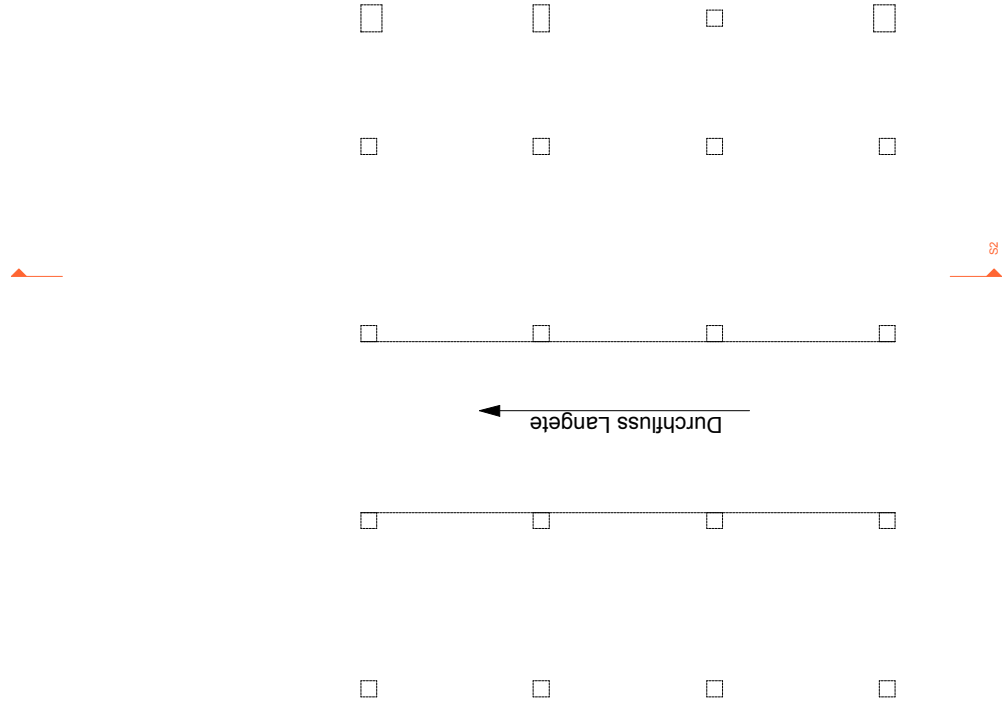
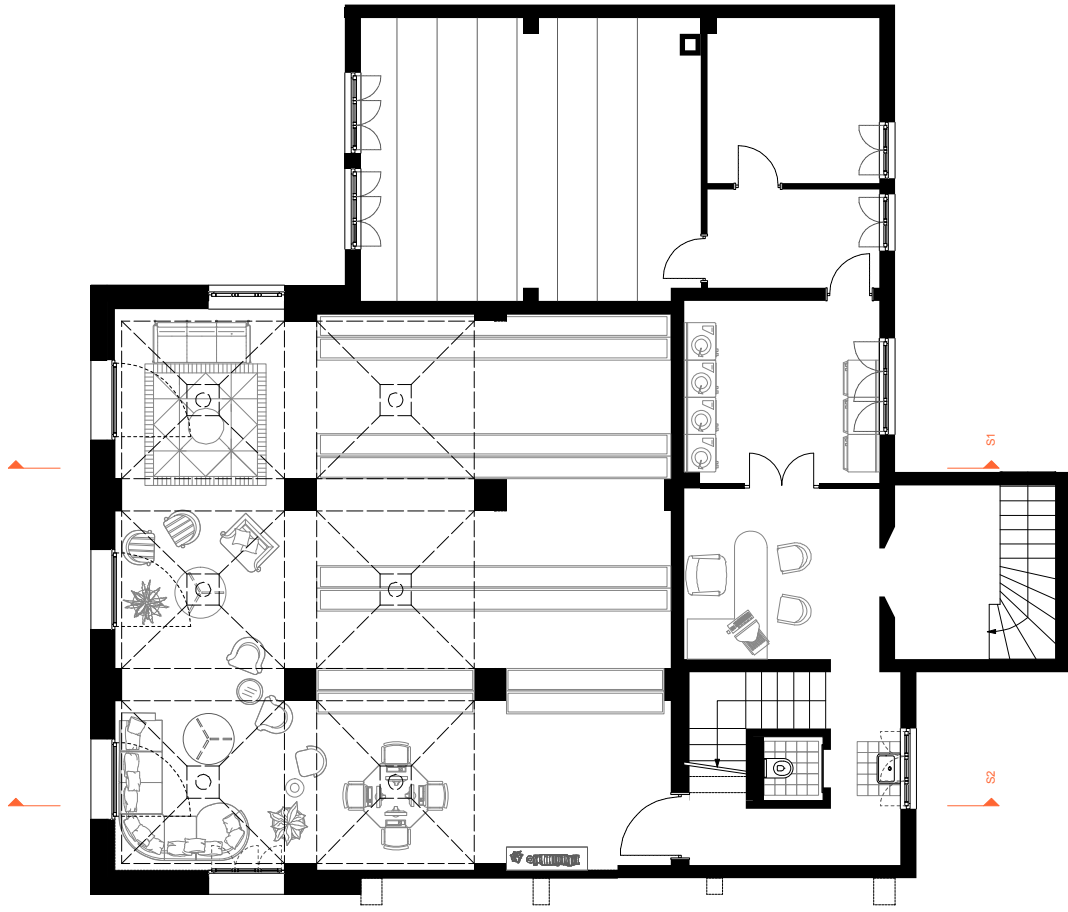


- Wohnungstyp 9
- Wohnungstyp 8
- Wohnungstyp 7
- Wohnungstyp 6
- Wohnungstyp 5
- Wohnungstyp 4
- Wohnungstyp 3
- Wohnungstyp 2
- Wohnungstyp 1
- Gewerbe
- Wasch- und Trockenraum
- Bibliothek

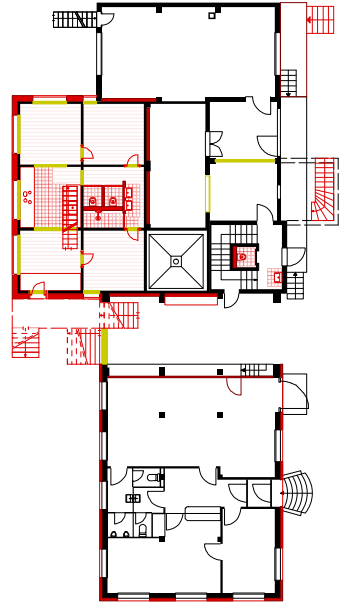
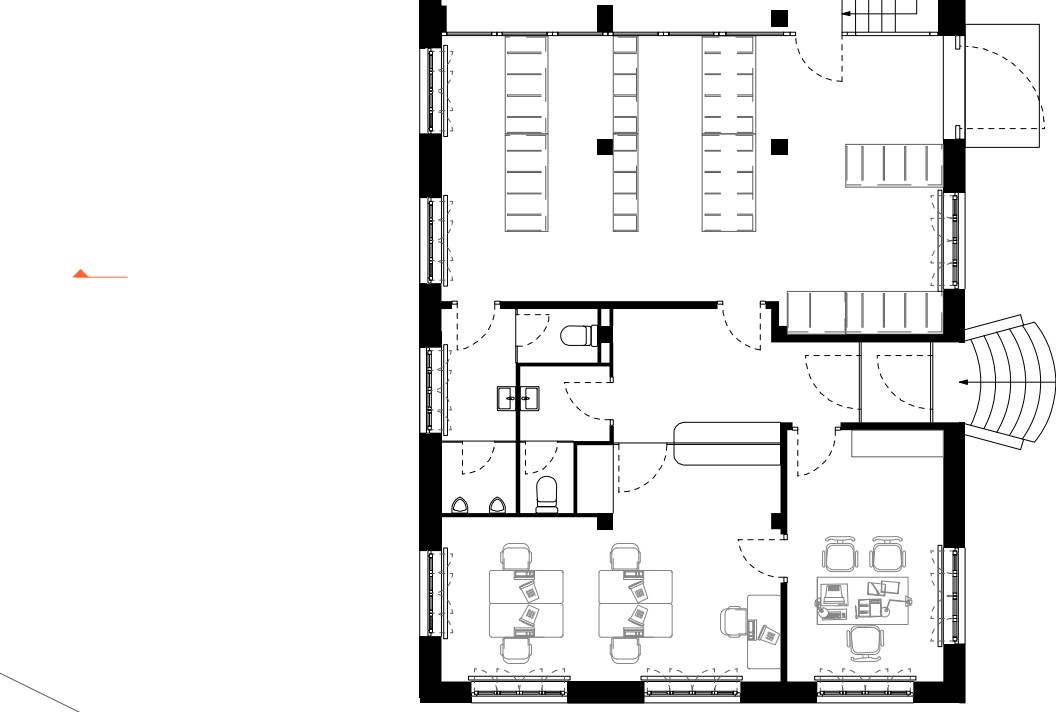
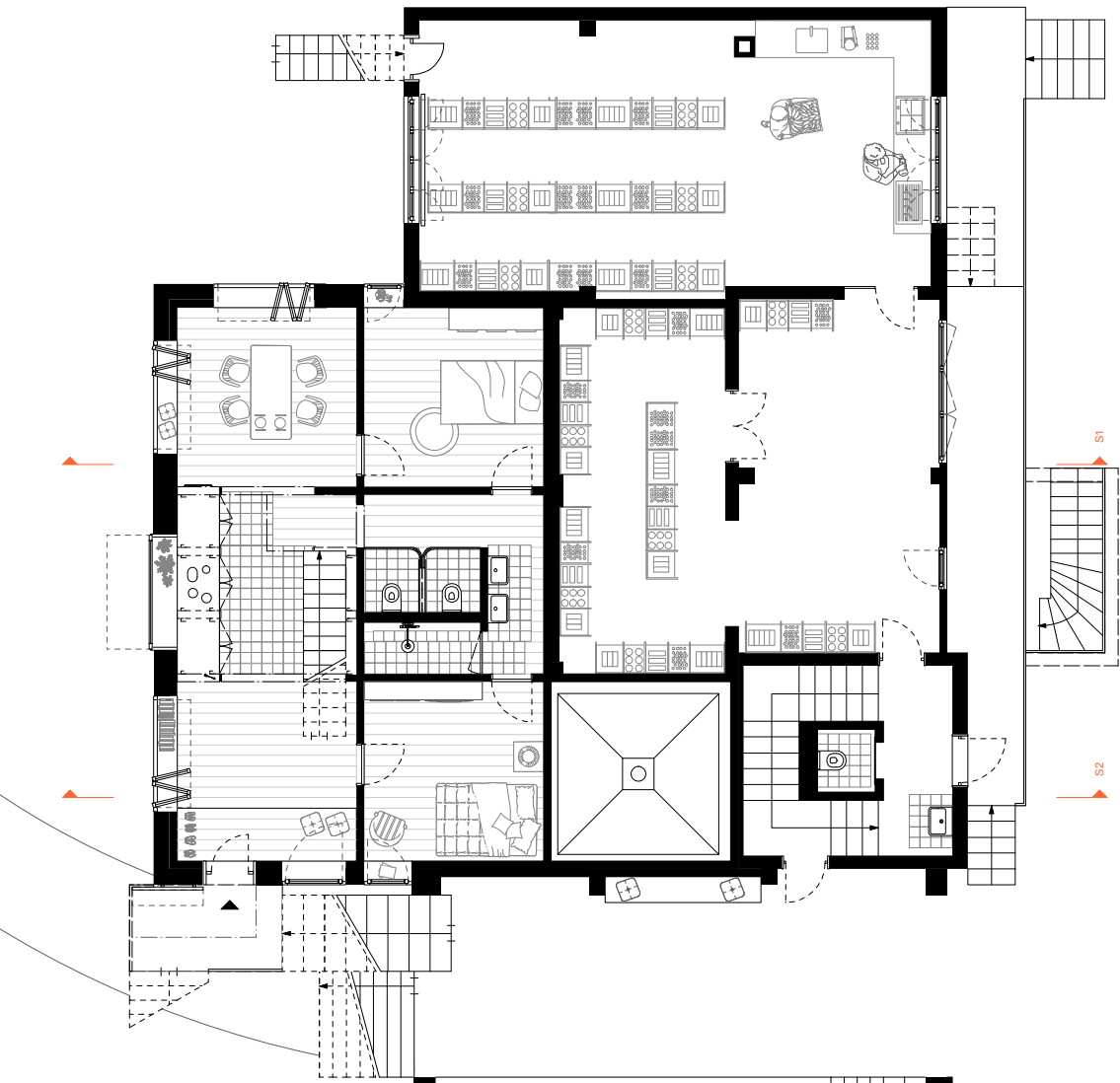


Öffentliche Erschließung
 Wohnungsinterne Erschließung

Erschließungsschema

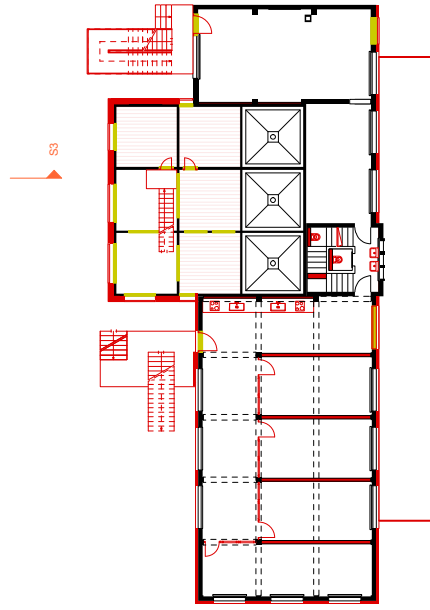
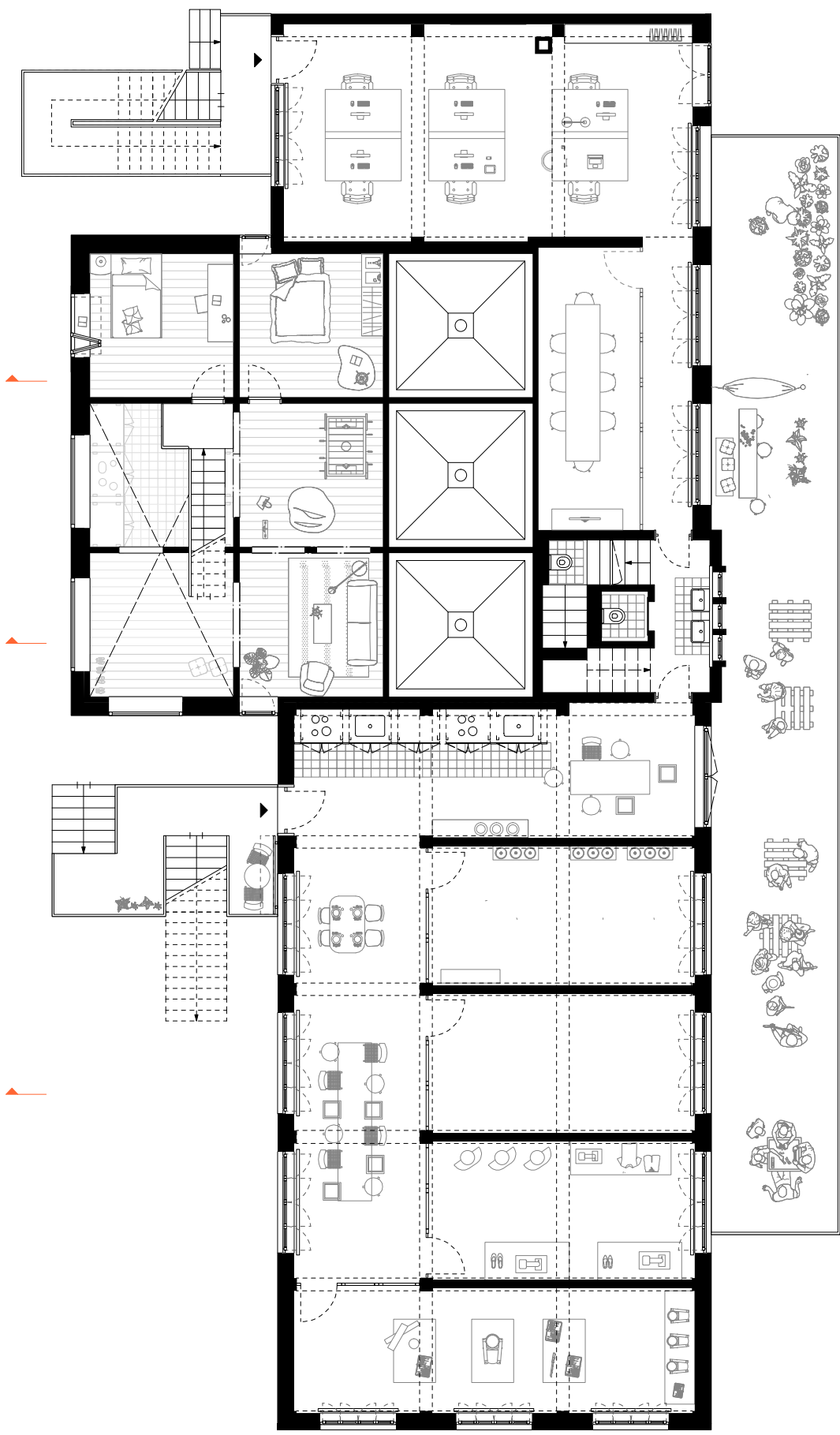


Untergeschoss 1:100

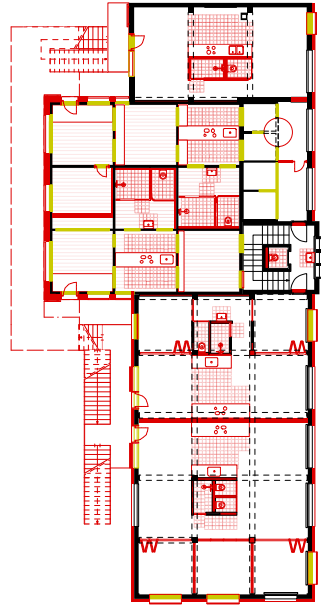
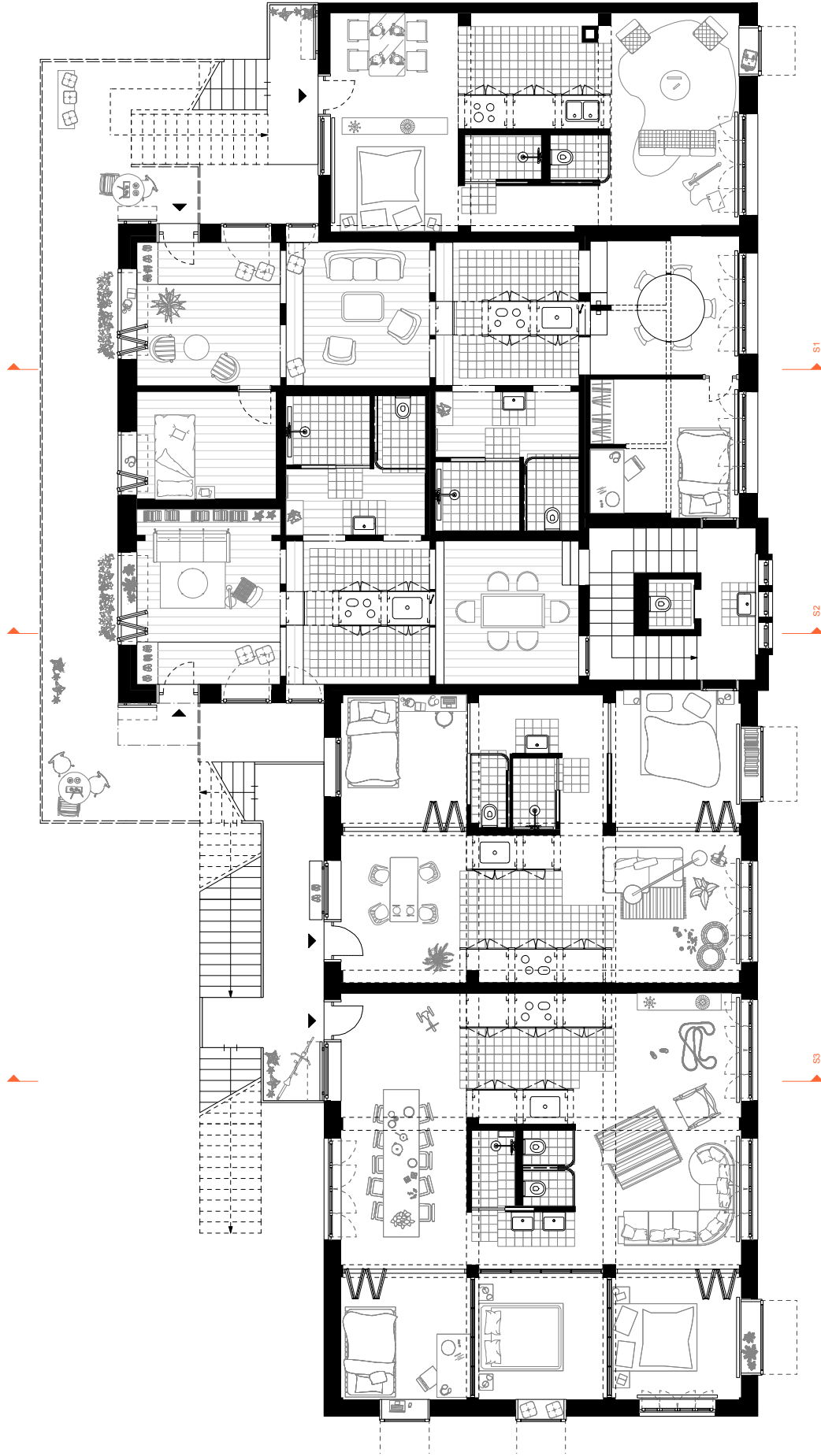


Erdgeschoss 1:100



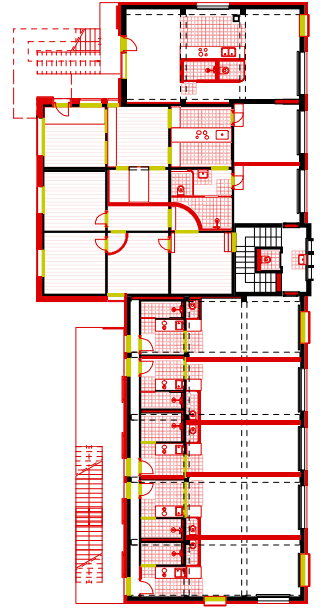
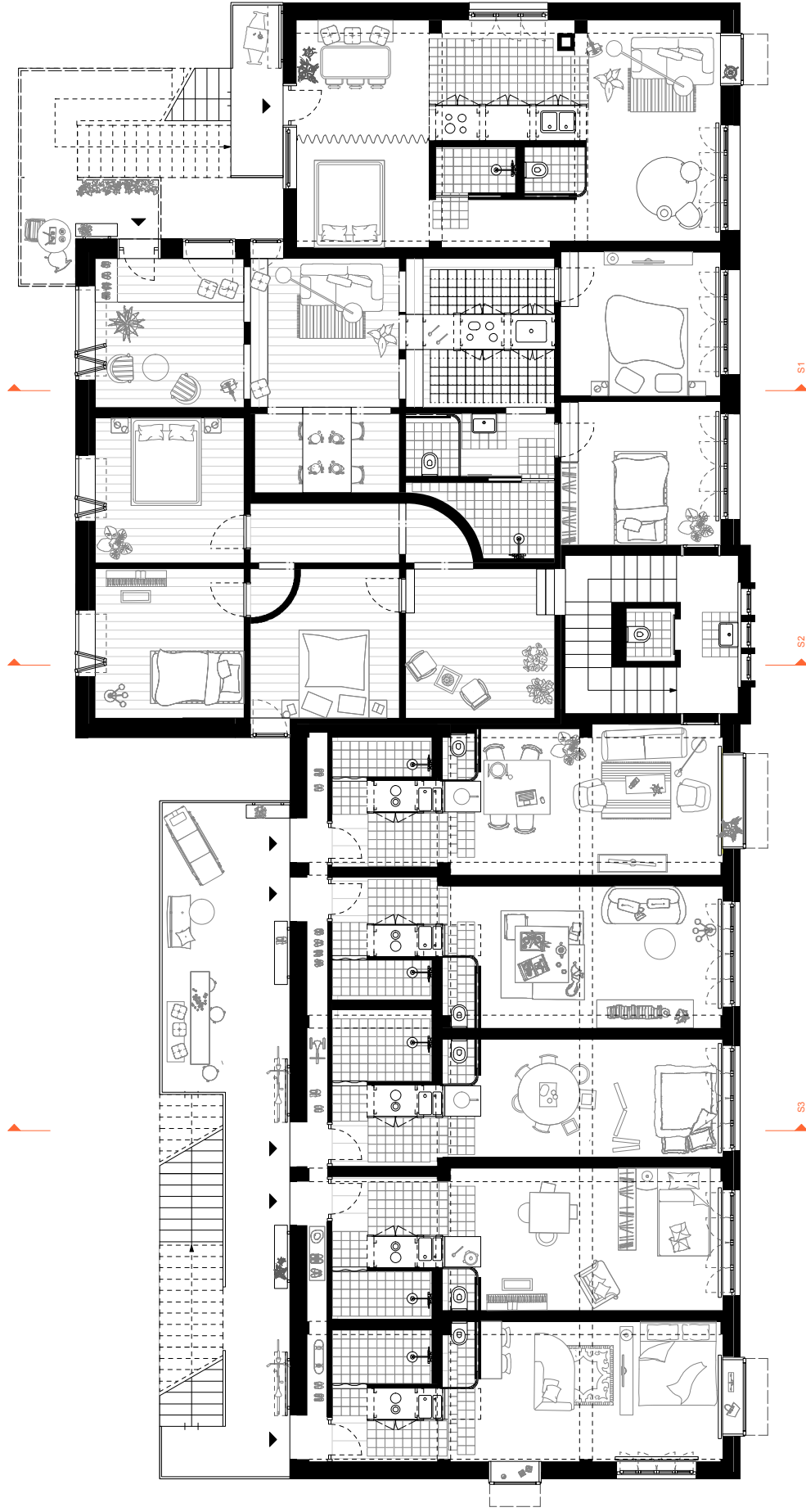


Obergeschoss 1 | 1:100

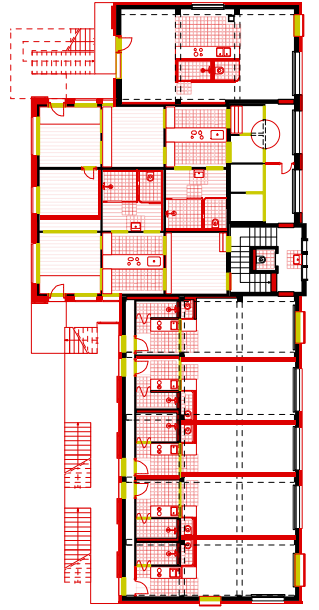
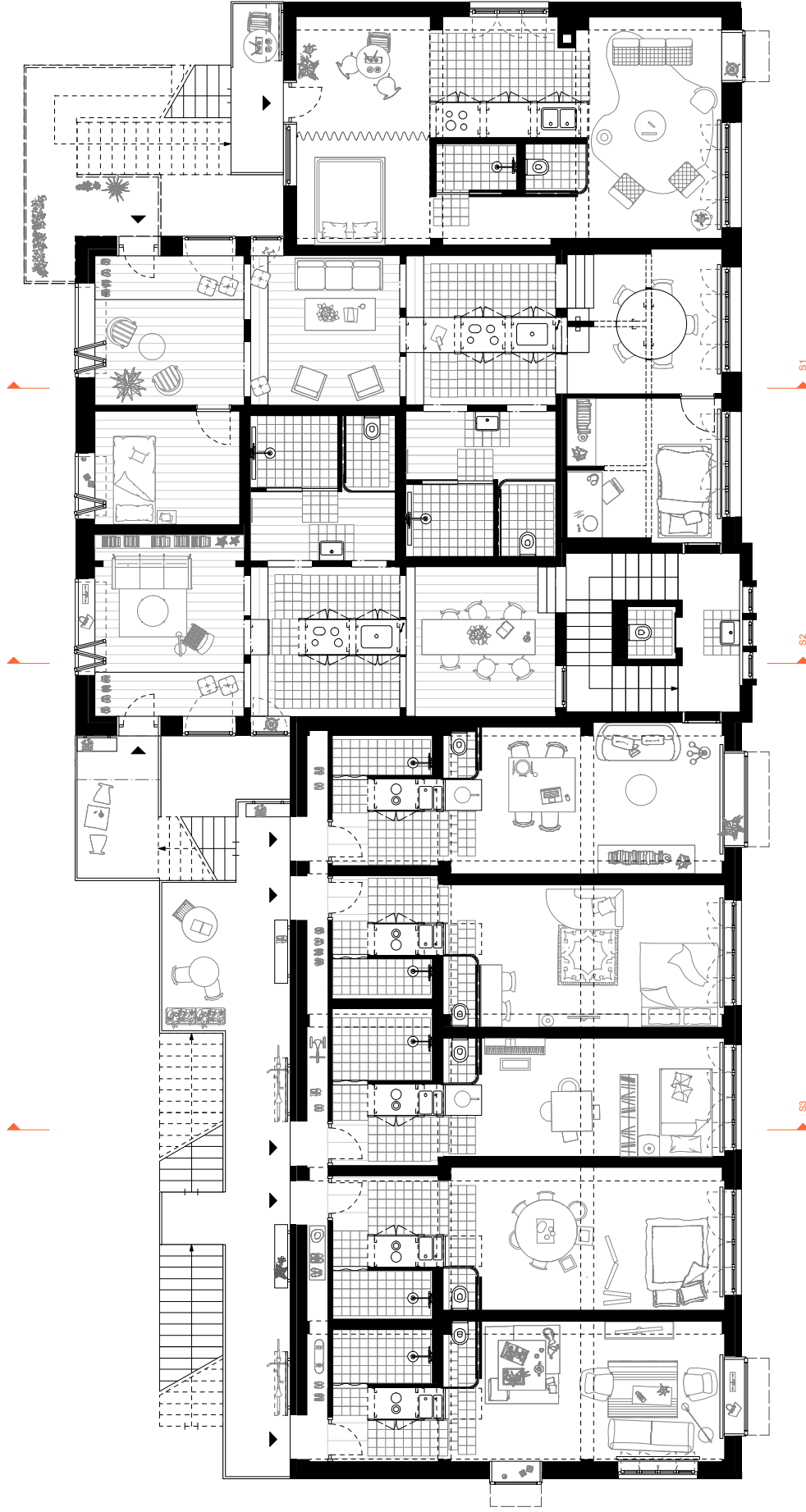


Obergeschoss 2 | 1:100

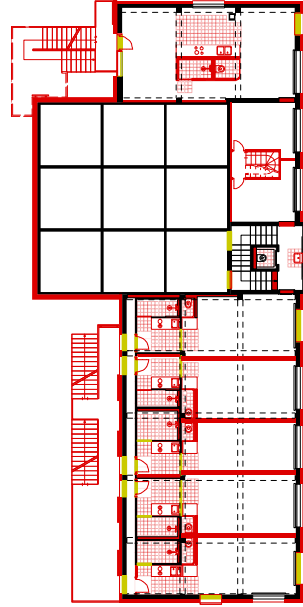
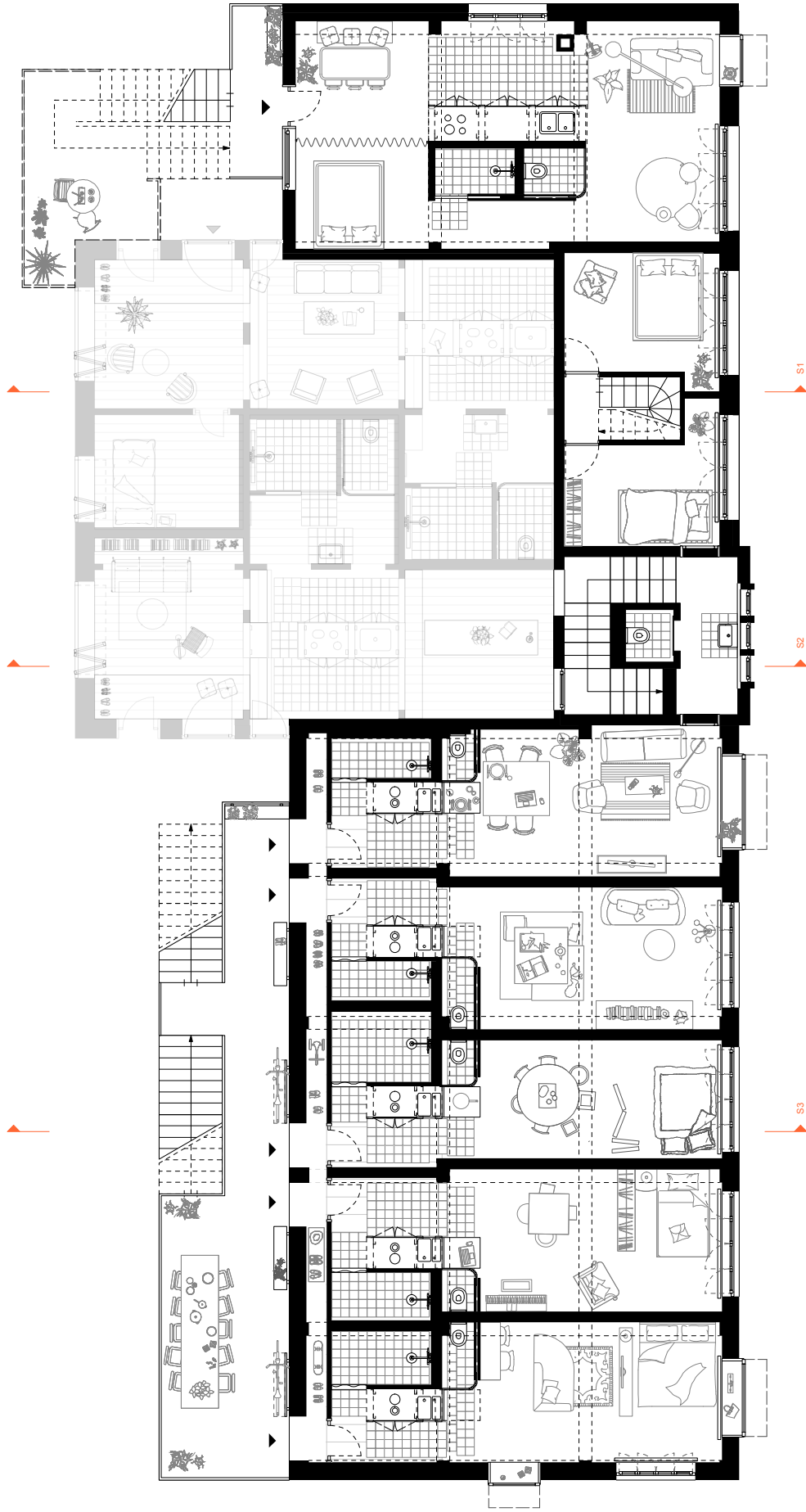




Obergeschoss 3 | 1:100

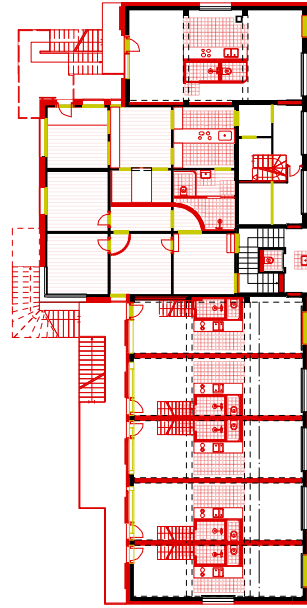
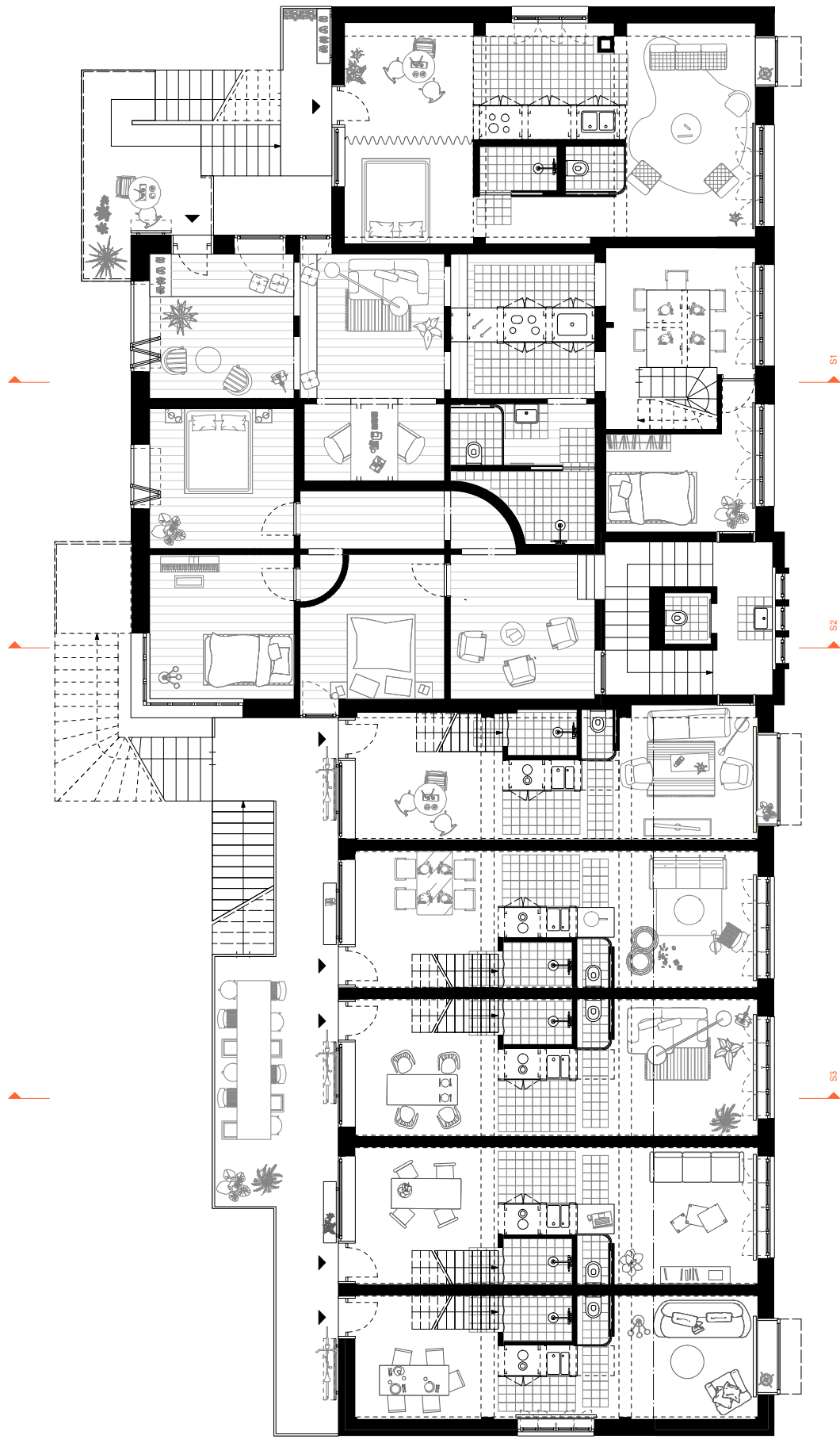


Obergeschoss 4 | 1:100

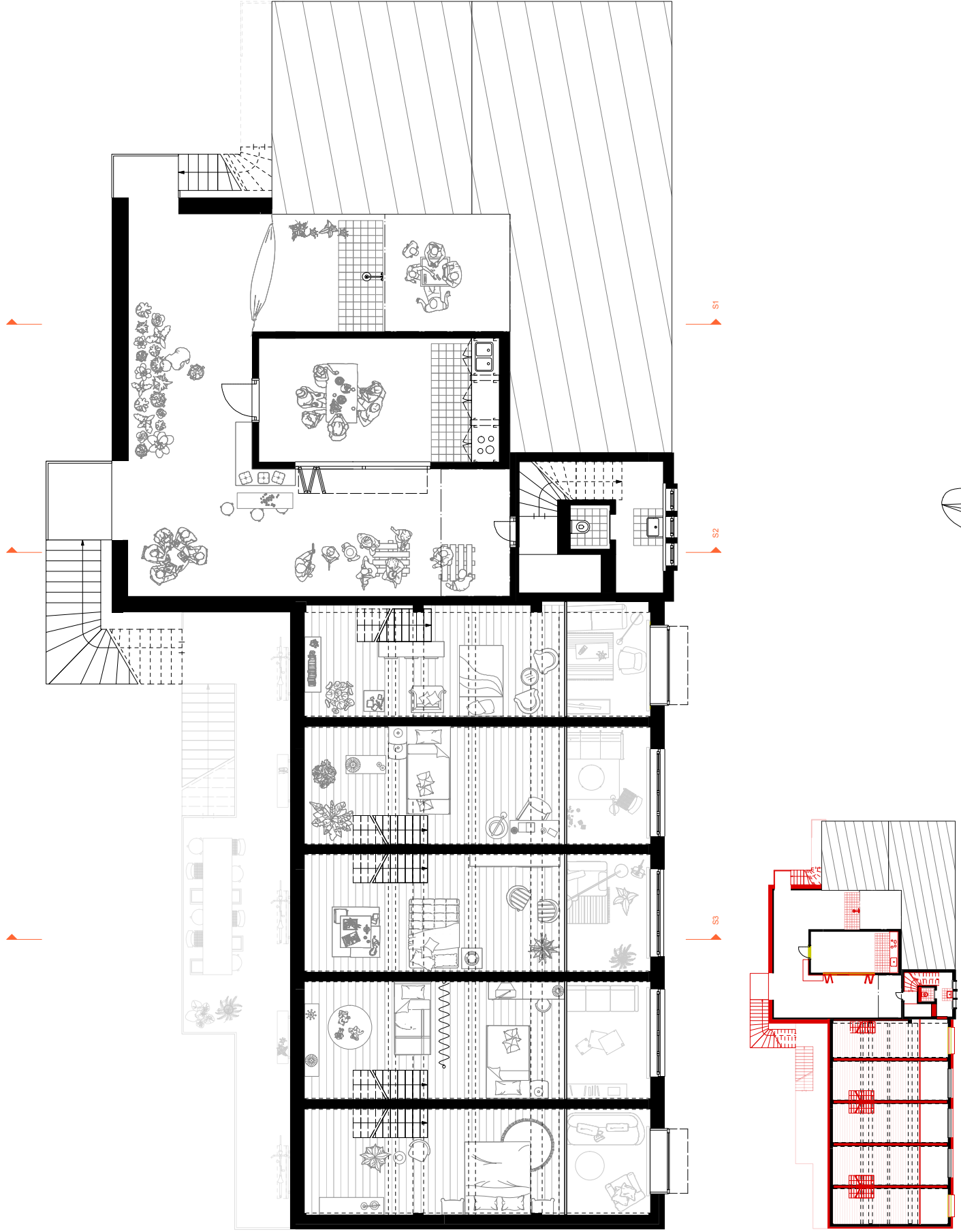


Obergeschoss 5 | 1:100



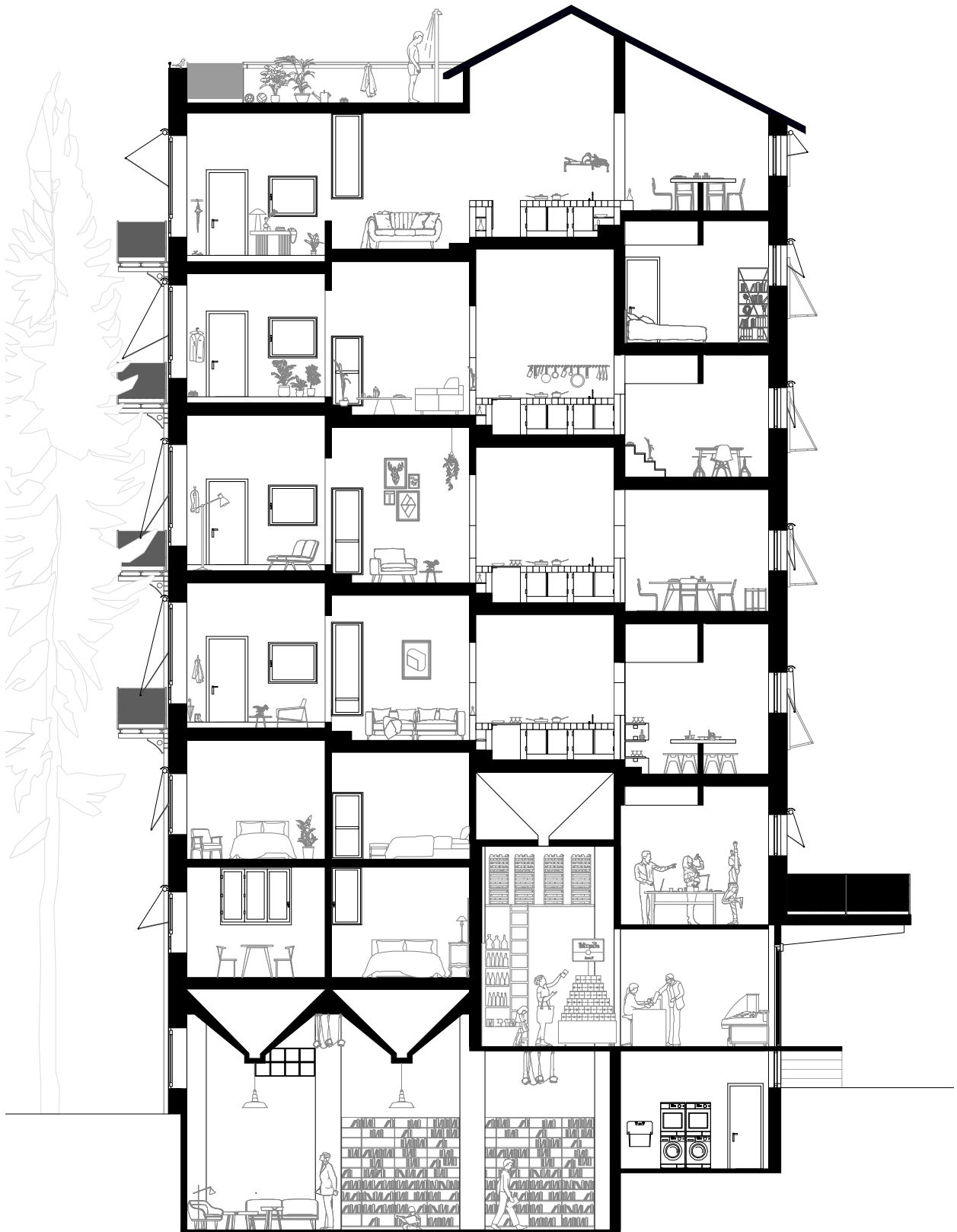


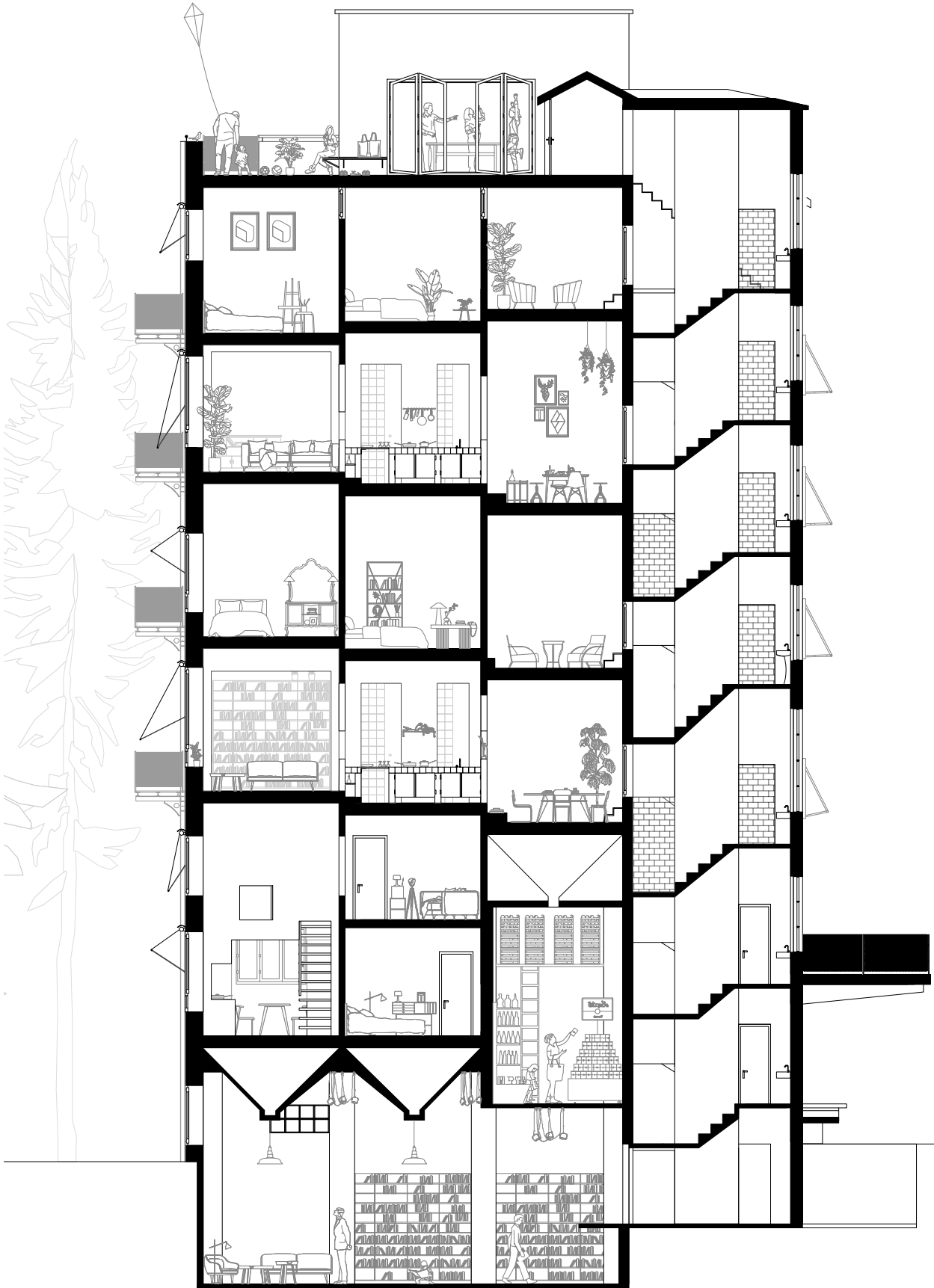
Obergeschoss 6 | 1:100



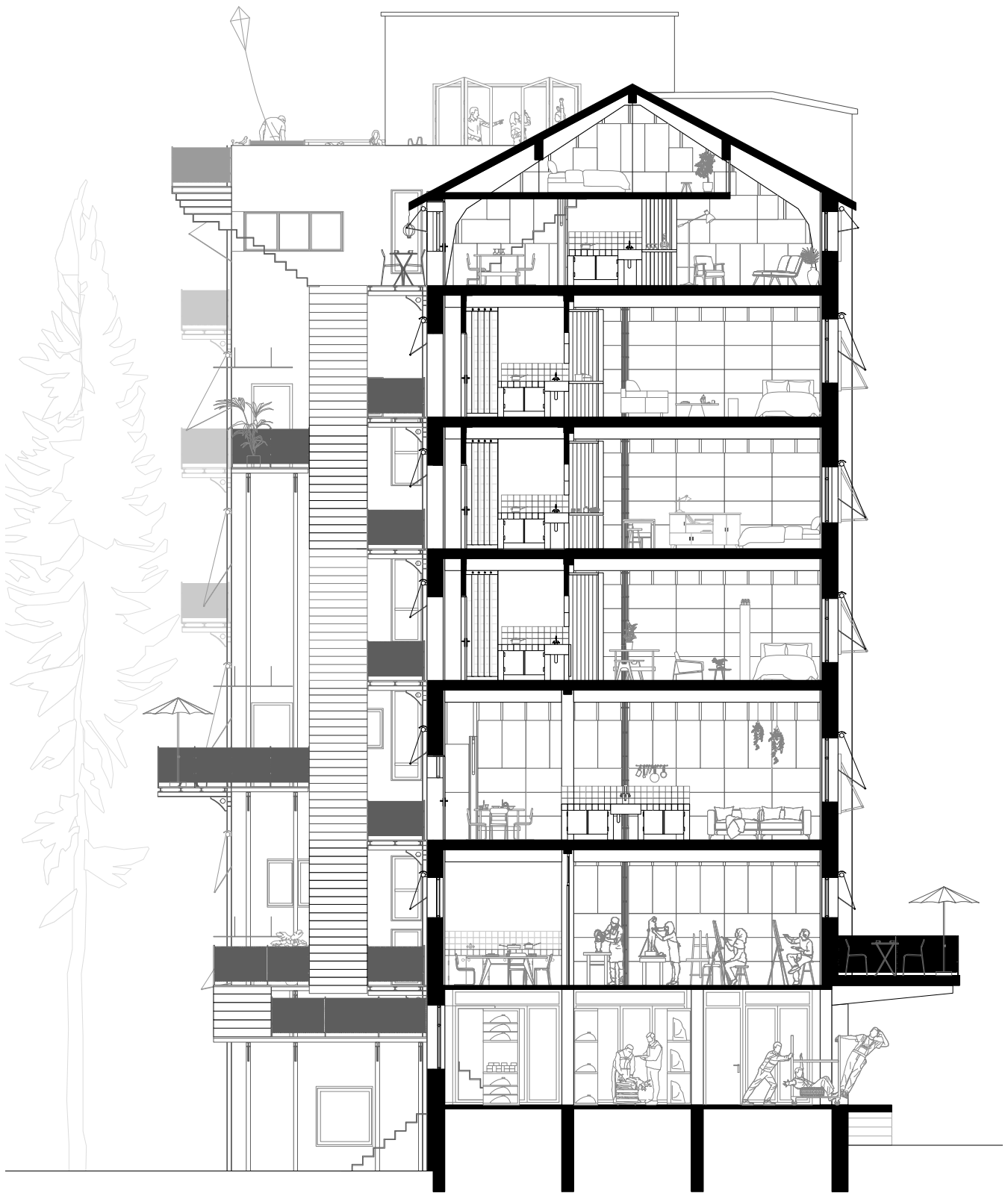
Obergeschoss 7 | 1:100



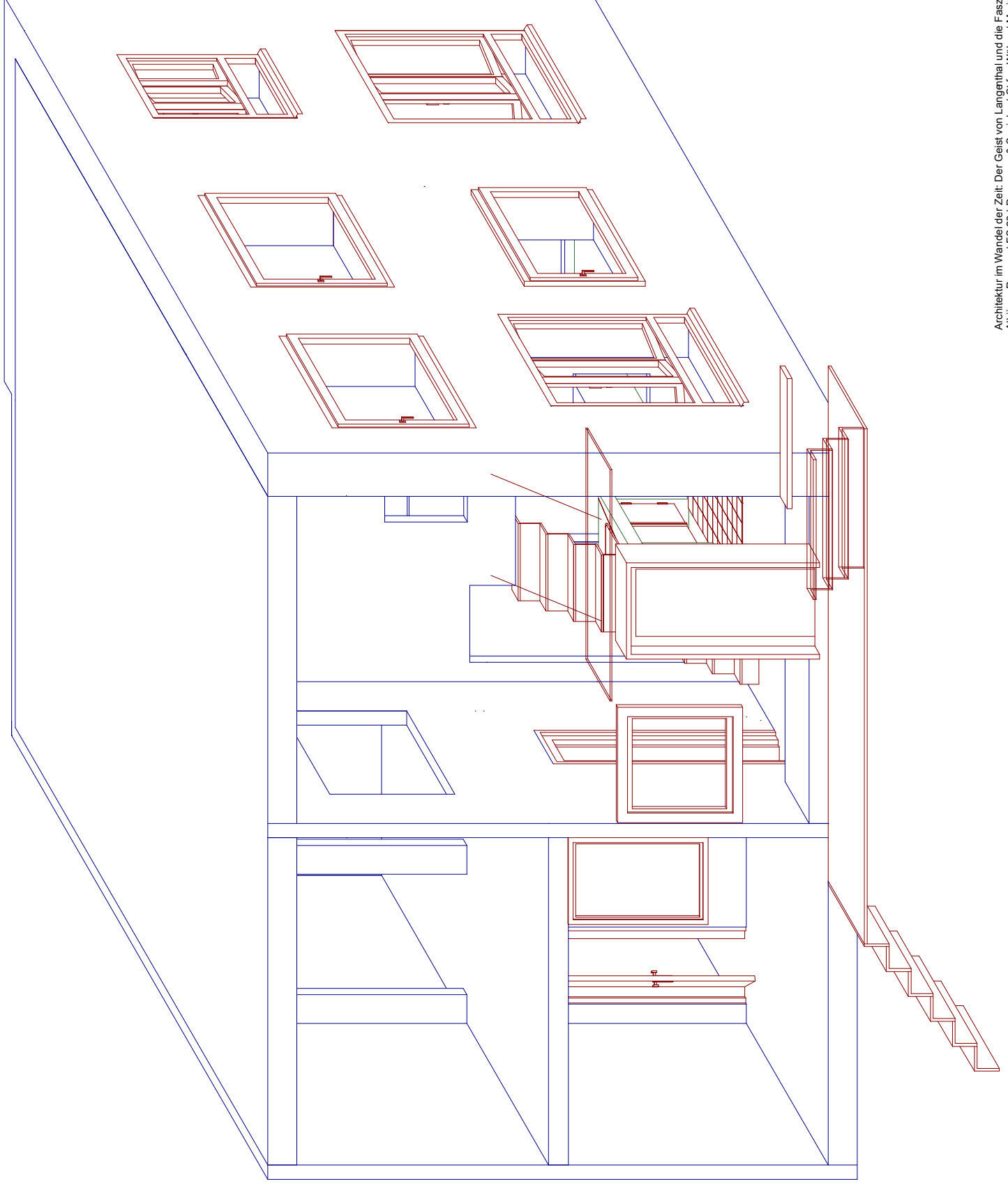




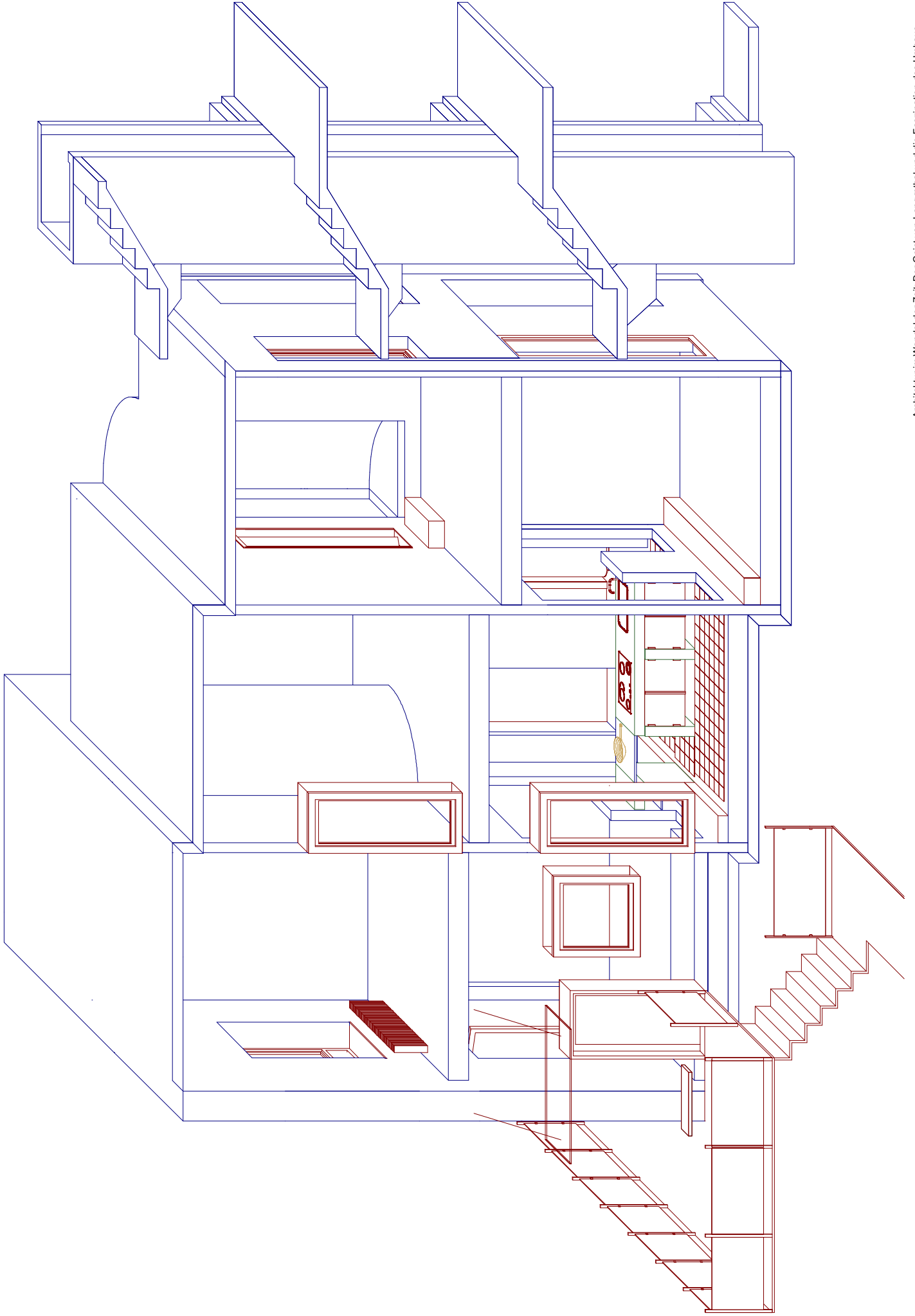
Querschnitt S2

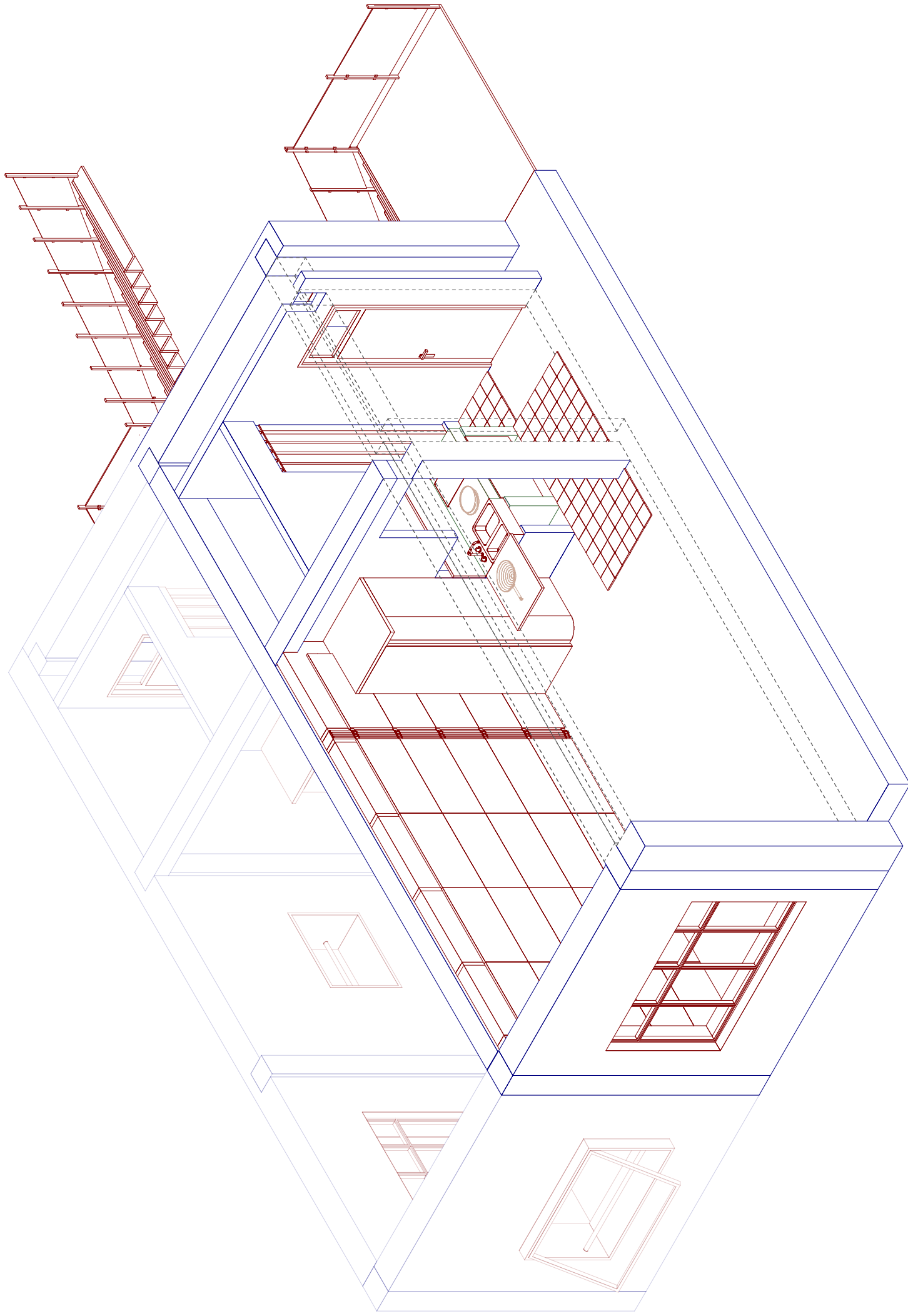


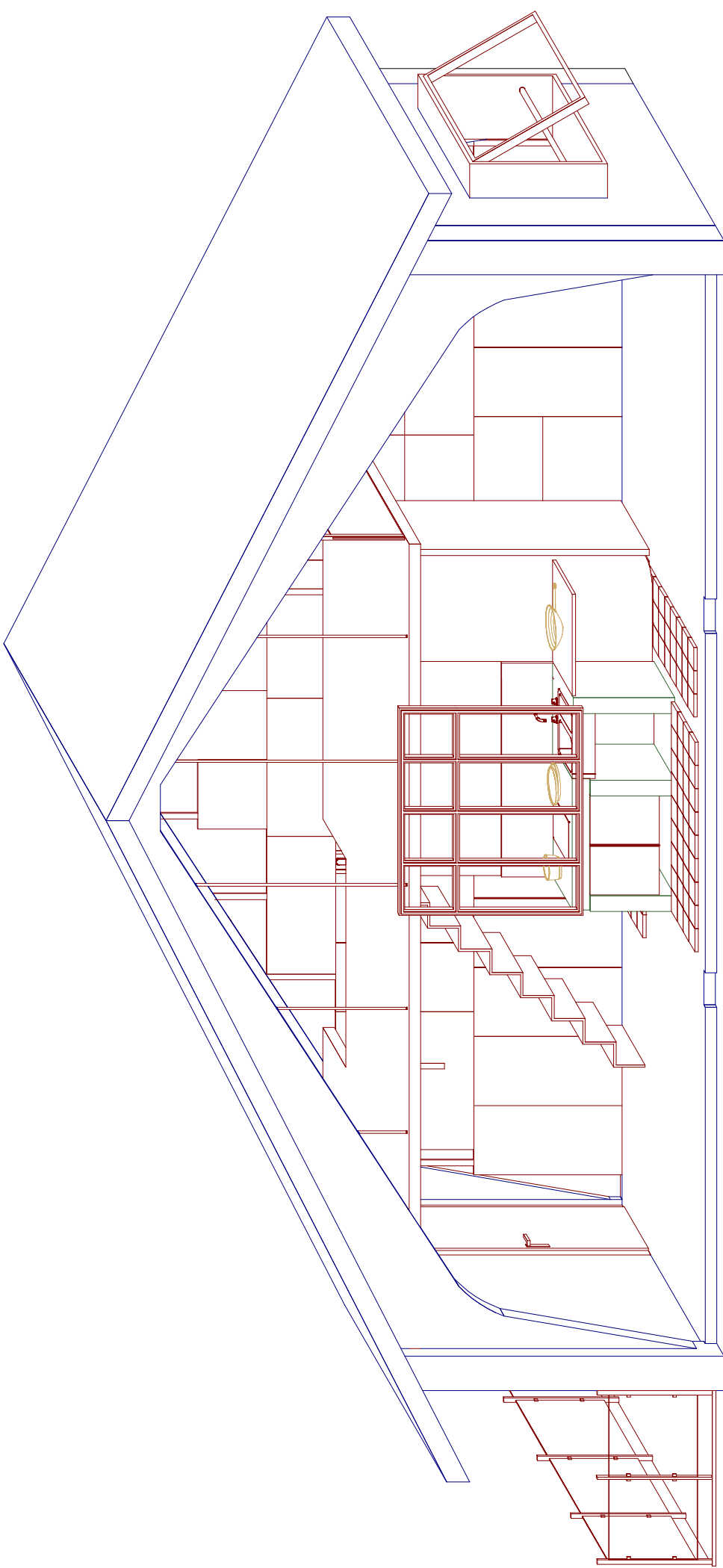
Querschnitt S3

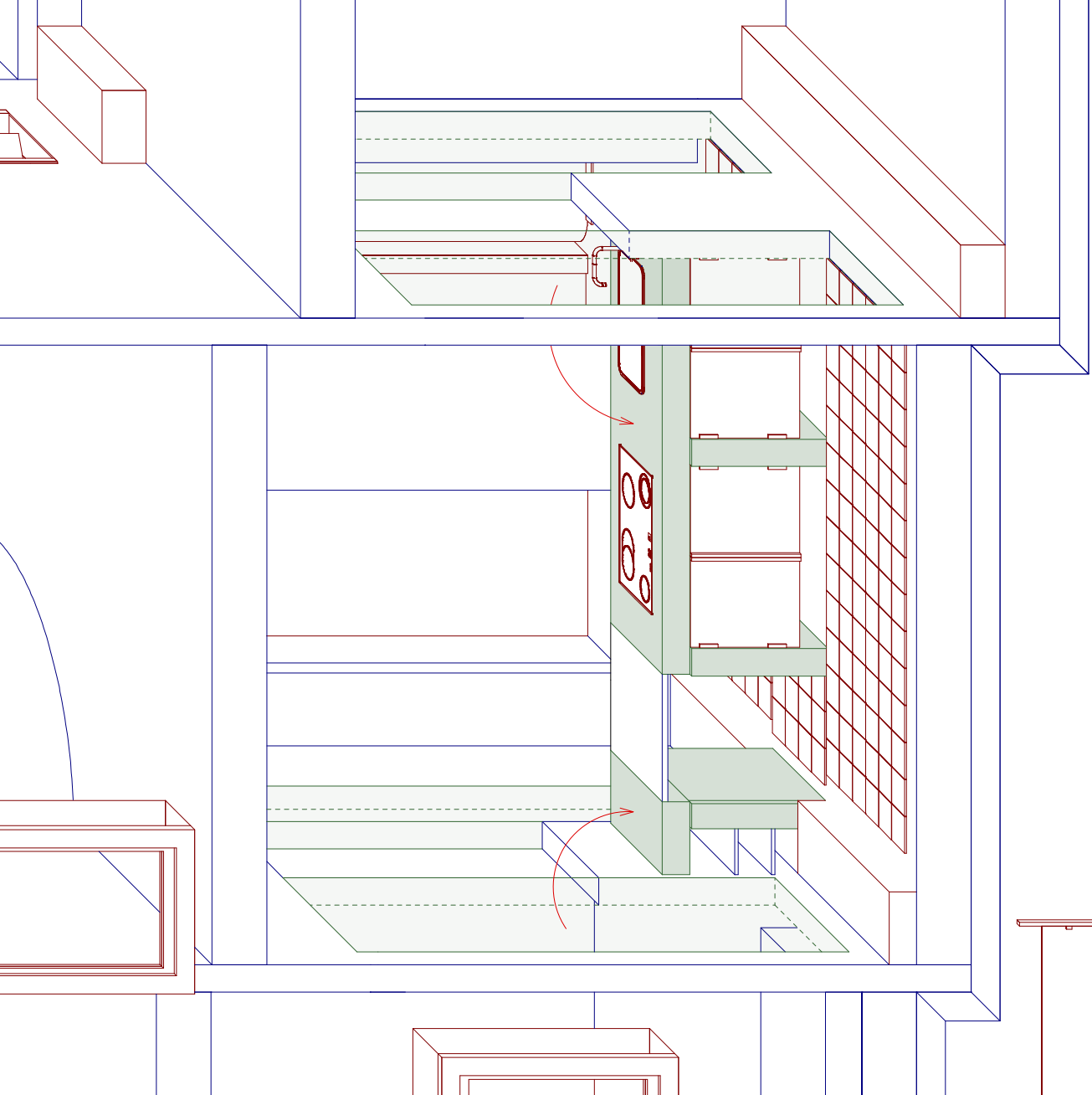


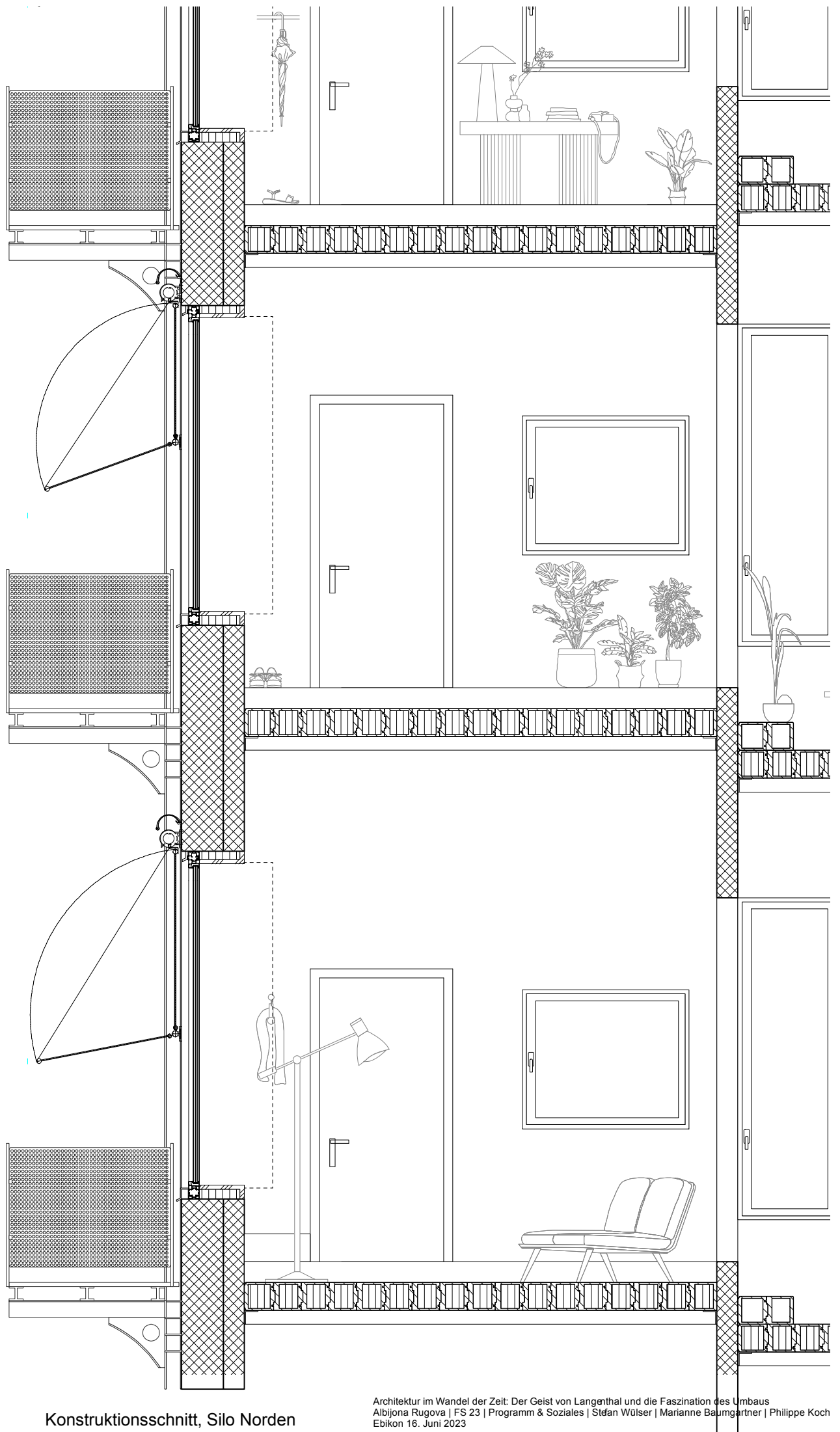
Silowohnung EG/ OG1



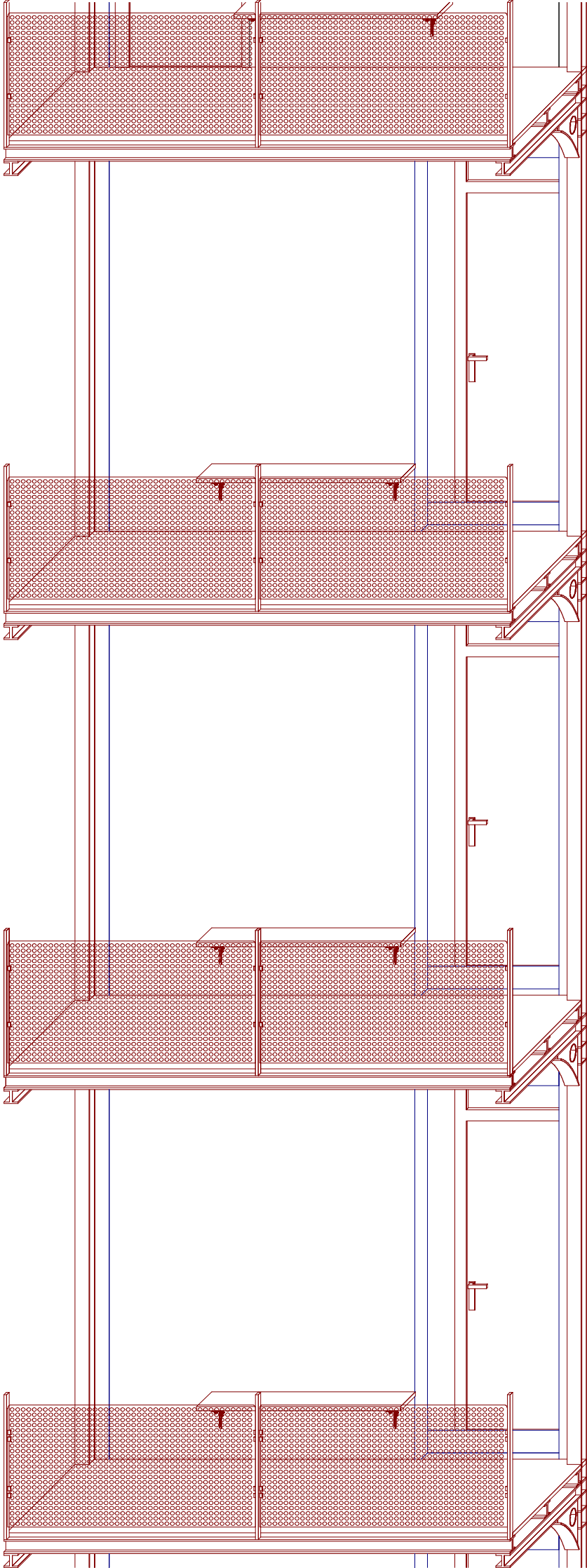








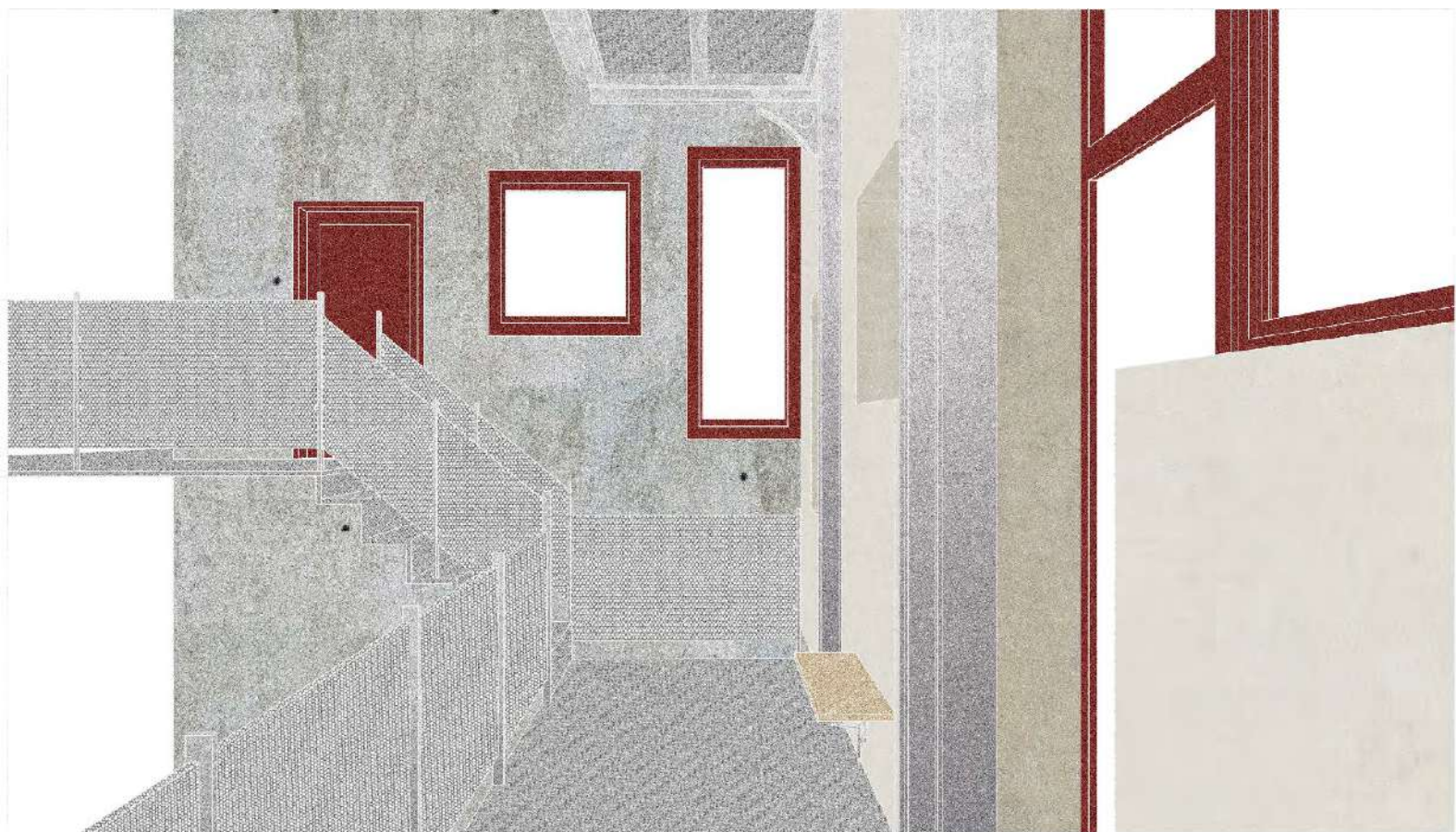
Konstruktionsschnitt, Silo Norden



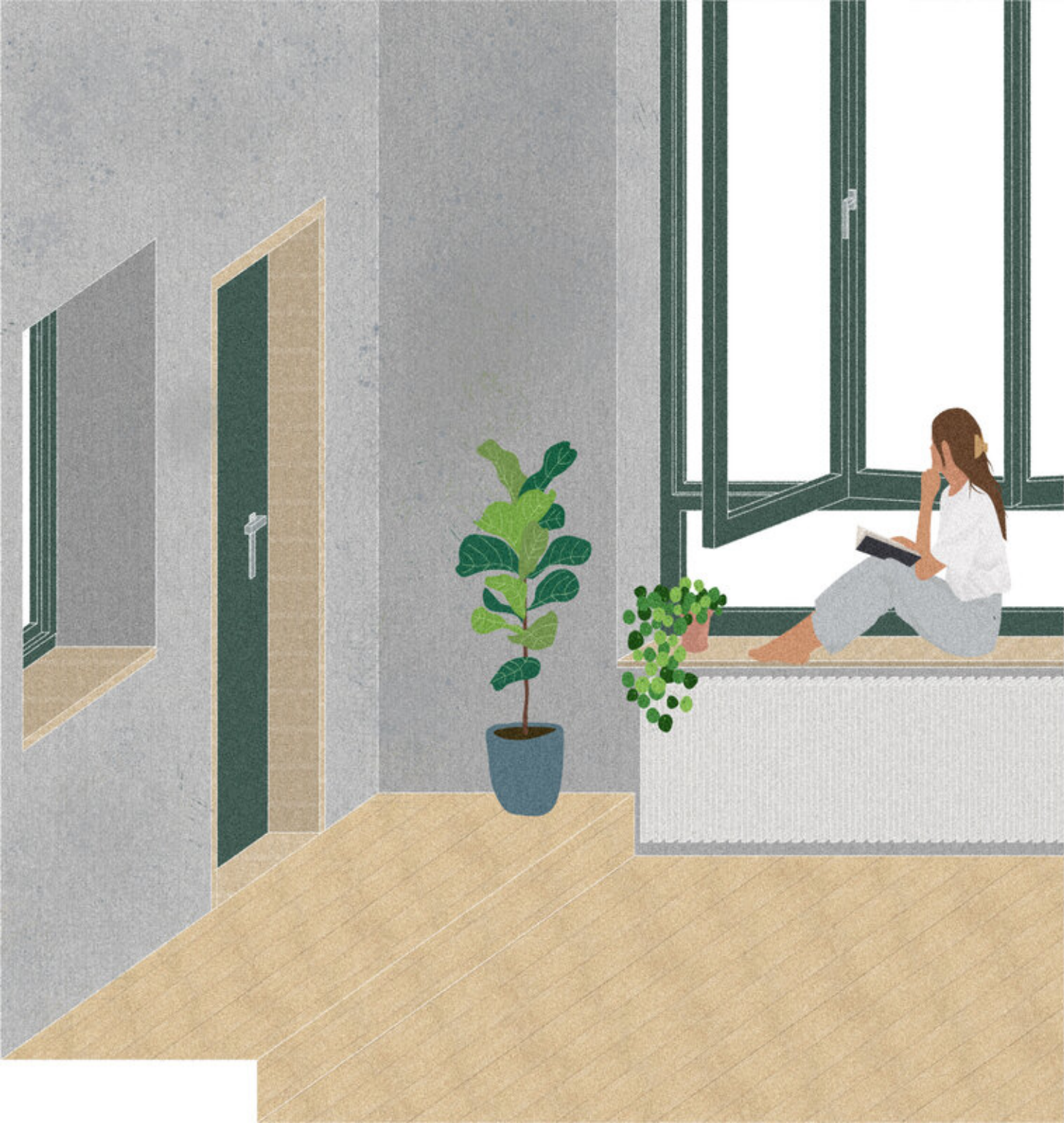


Südfassade











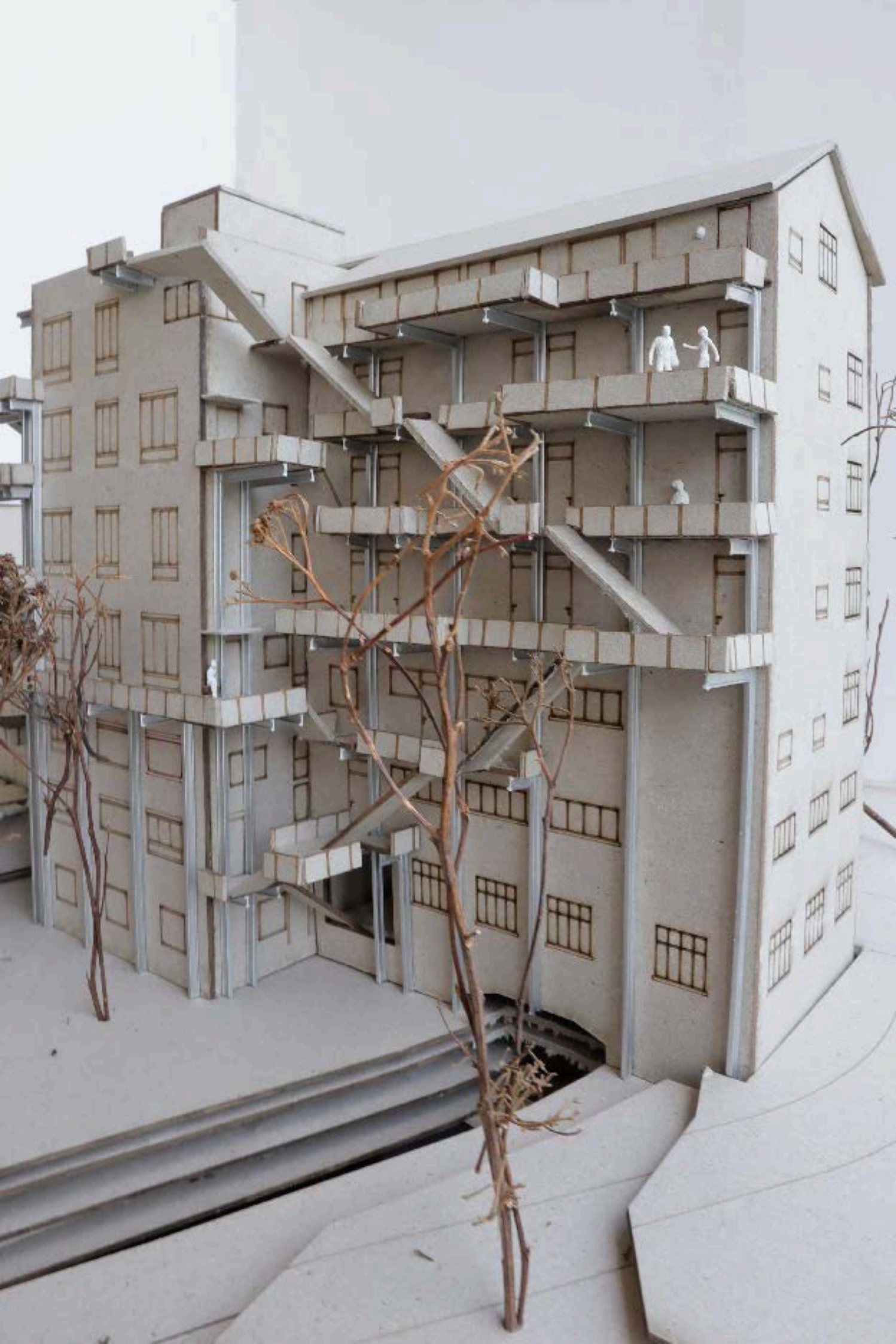


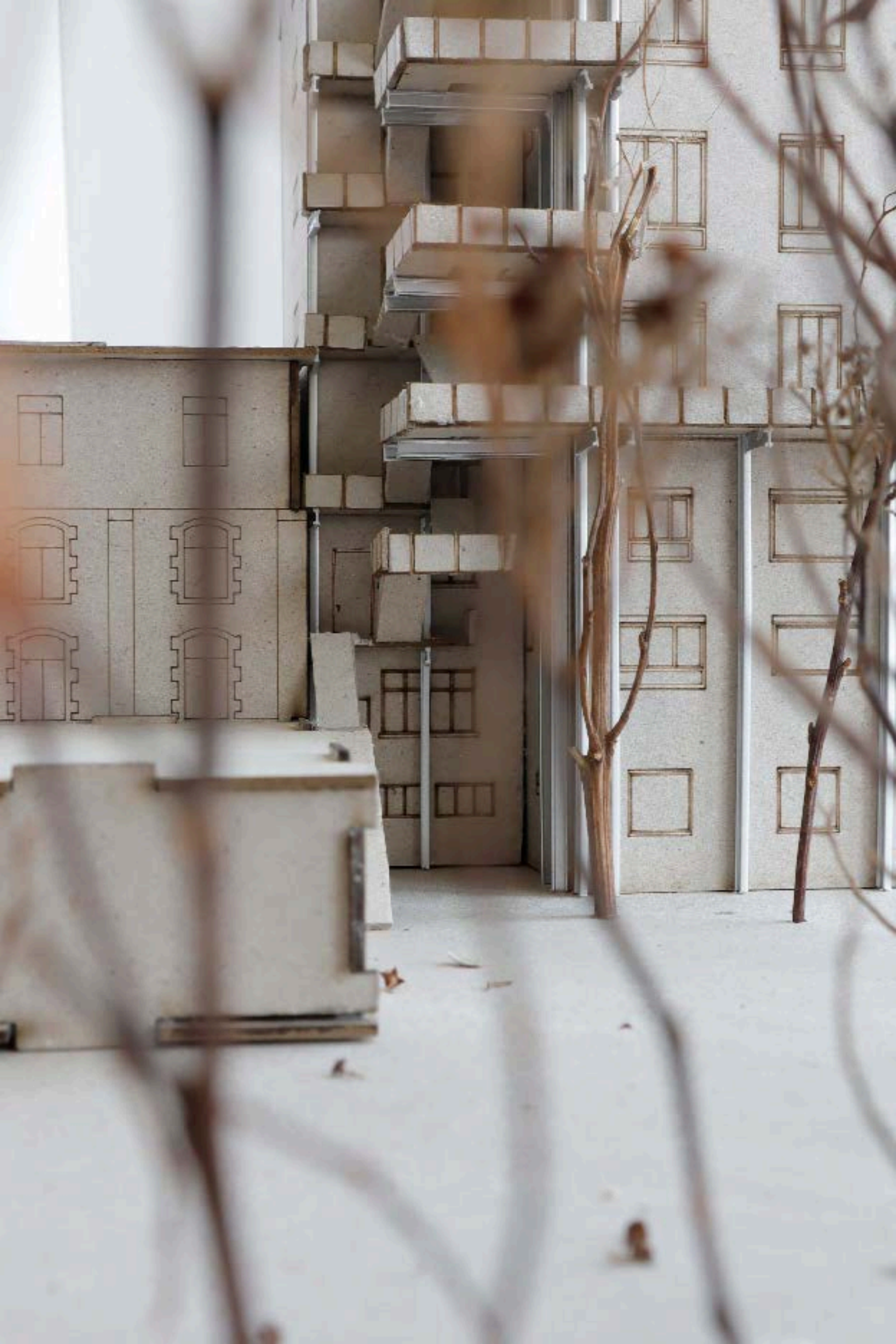






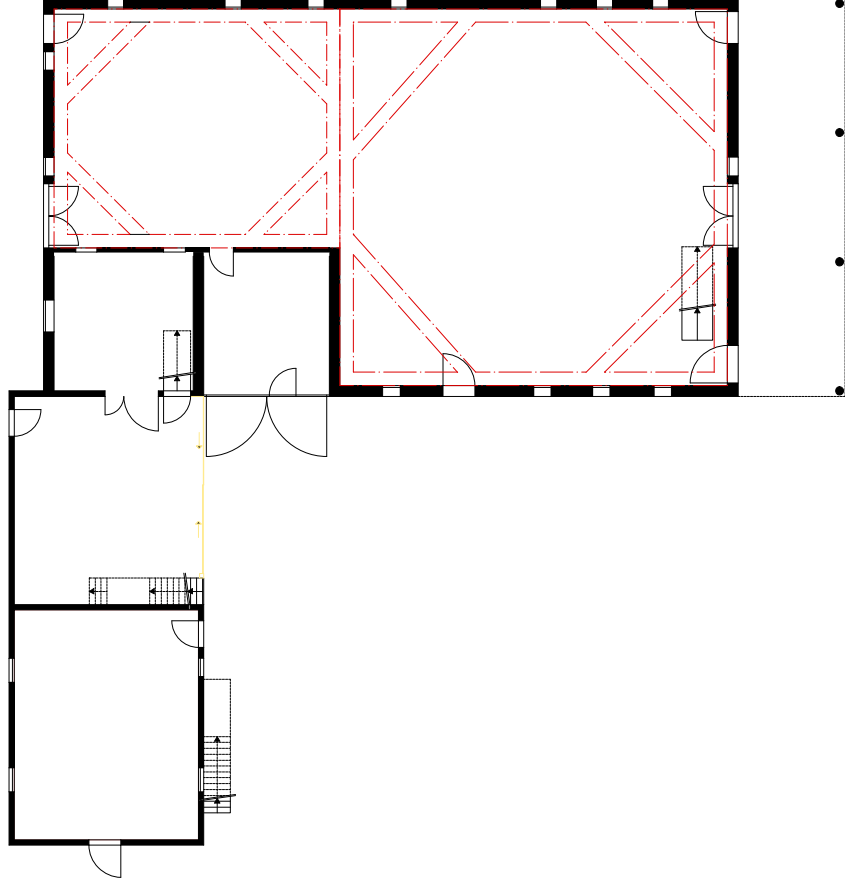
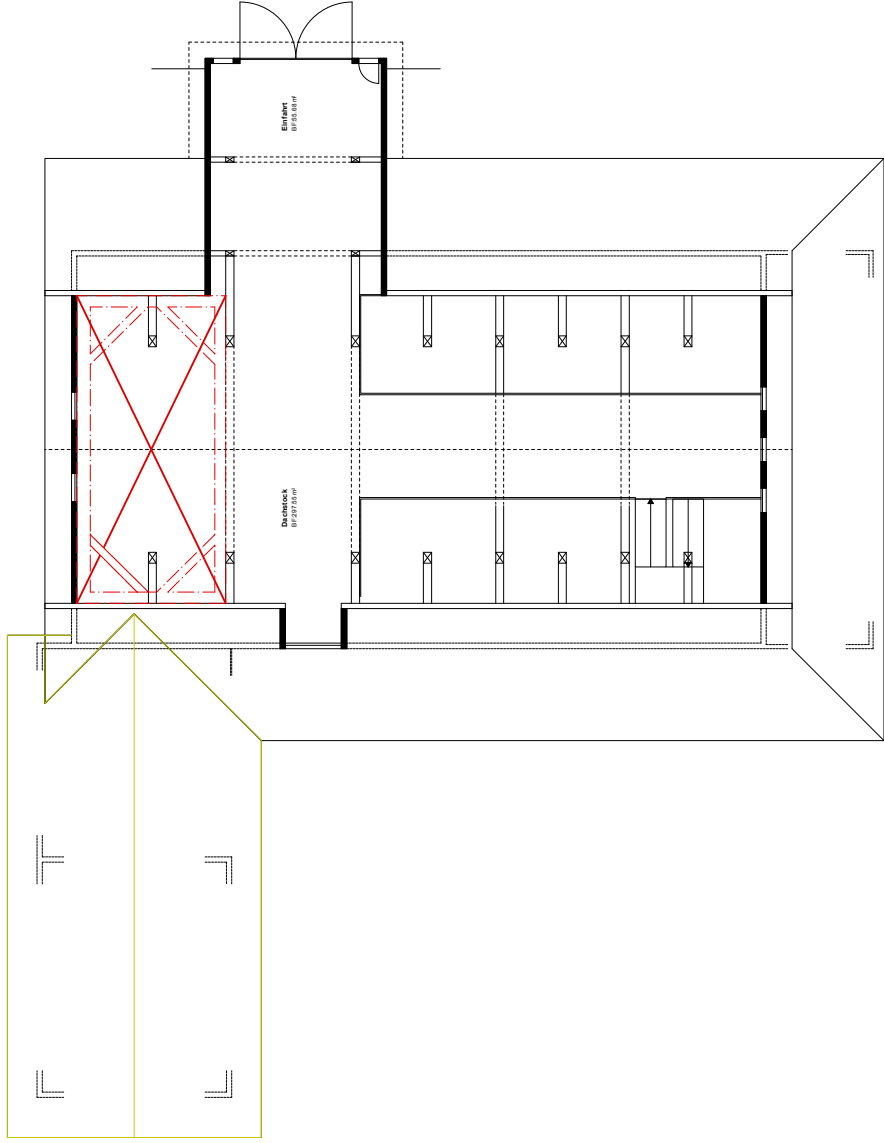




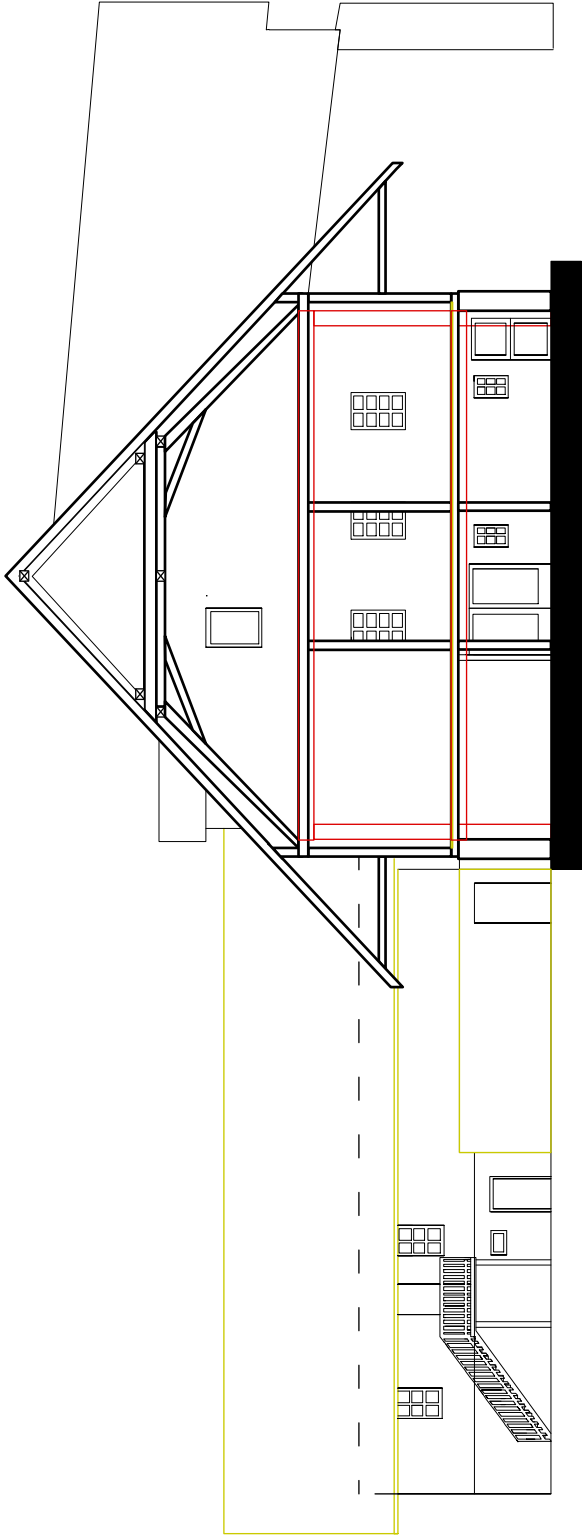




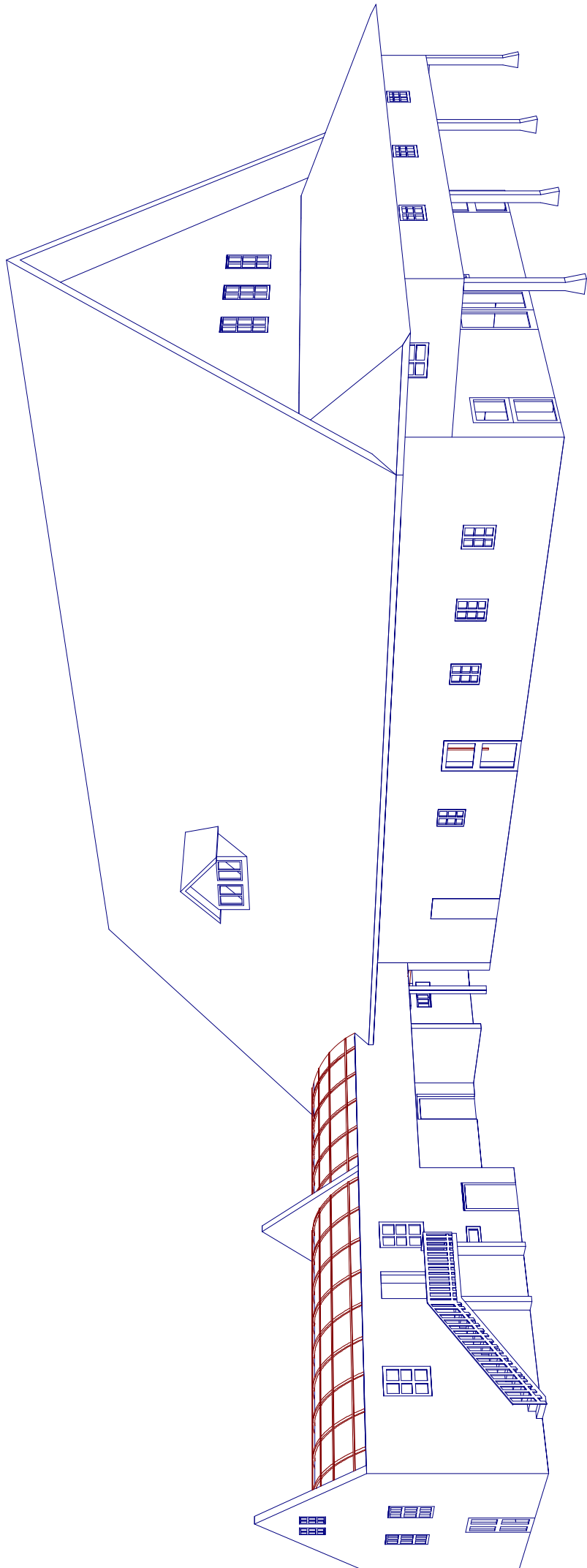


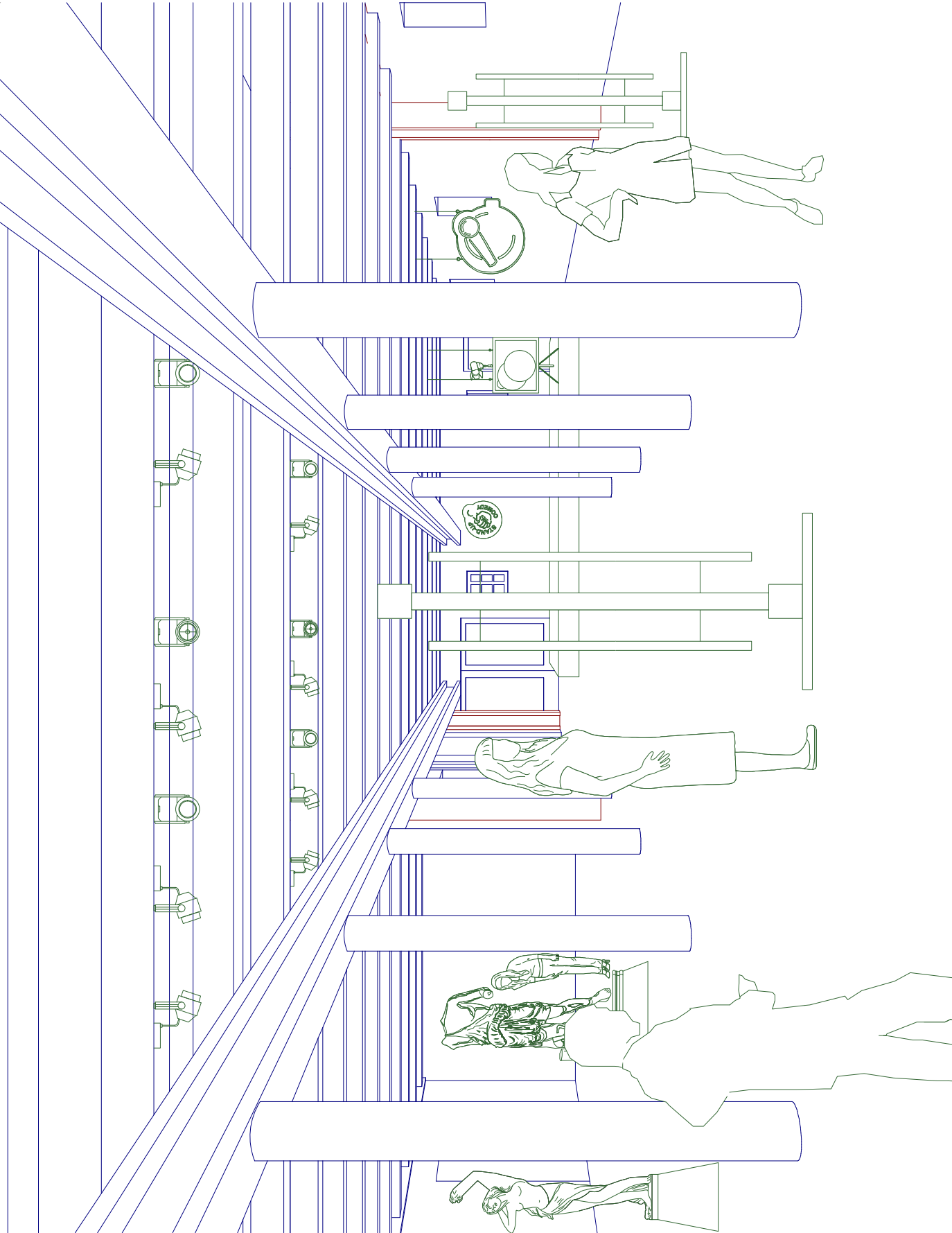


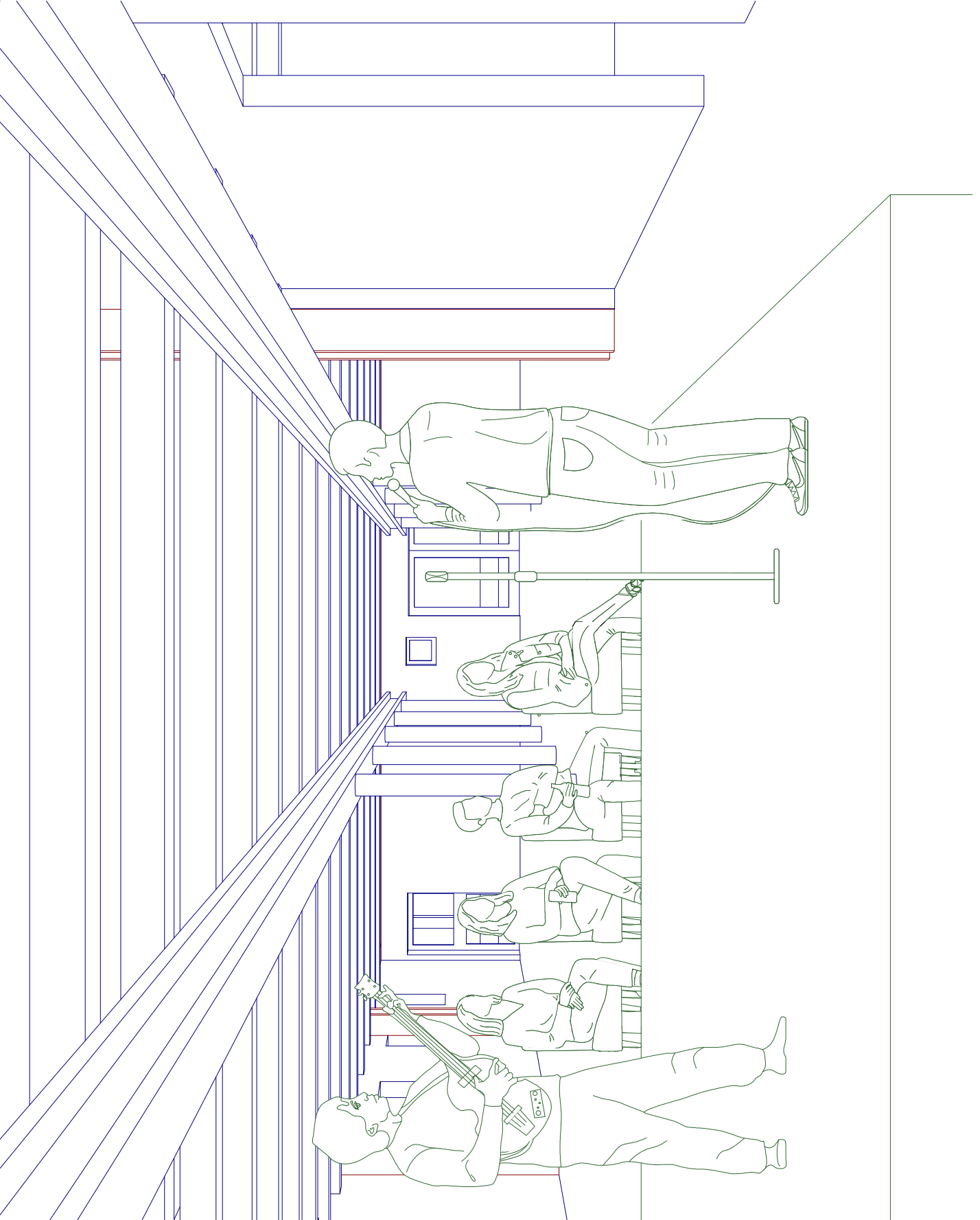
Mühlehof EG & OG 1 | 1:200

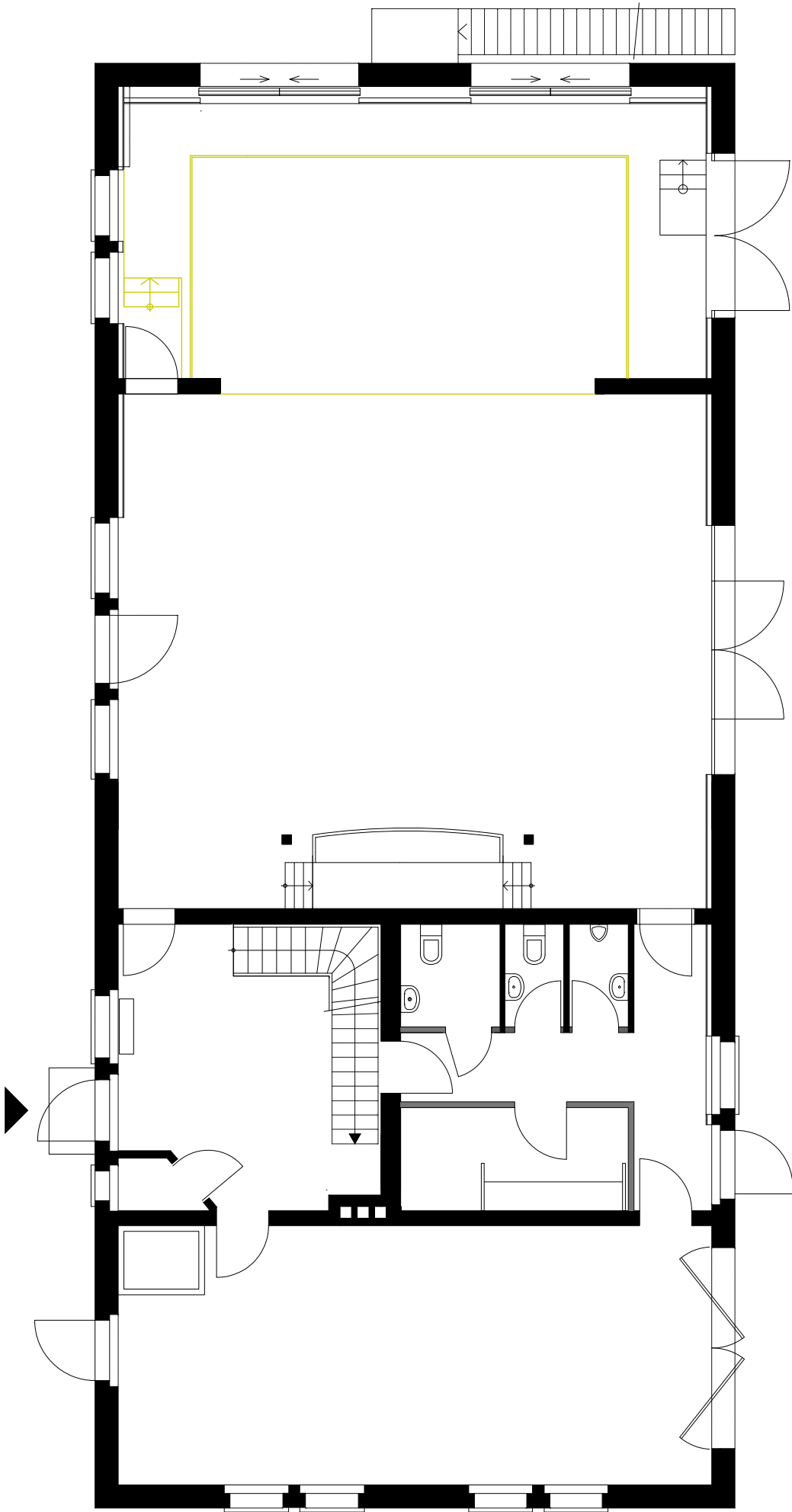


Mühlehof Schnitt 1:100









Alte Stallungen EG 1:100

