

# **Bachelor-Thesis an der Hochschule Luzern - Technik & Architektur**

**Titel** **Alte Mühle Langenthal – Thema A**

**Diplomandin/Diplomand** **Rajaratnam, Jathushan**

**Bachelor-Studiengang** **Bachelor Architektur**

**Semester** **FS23**

**Dozentin/Dozent** **Rossbauer, Wolfgang**

**Expertin/Experte** **Seidel, Tim**

## **Abstract Deutsch**

Klicken oder tippen Sie hier, um Text einzugeben.

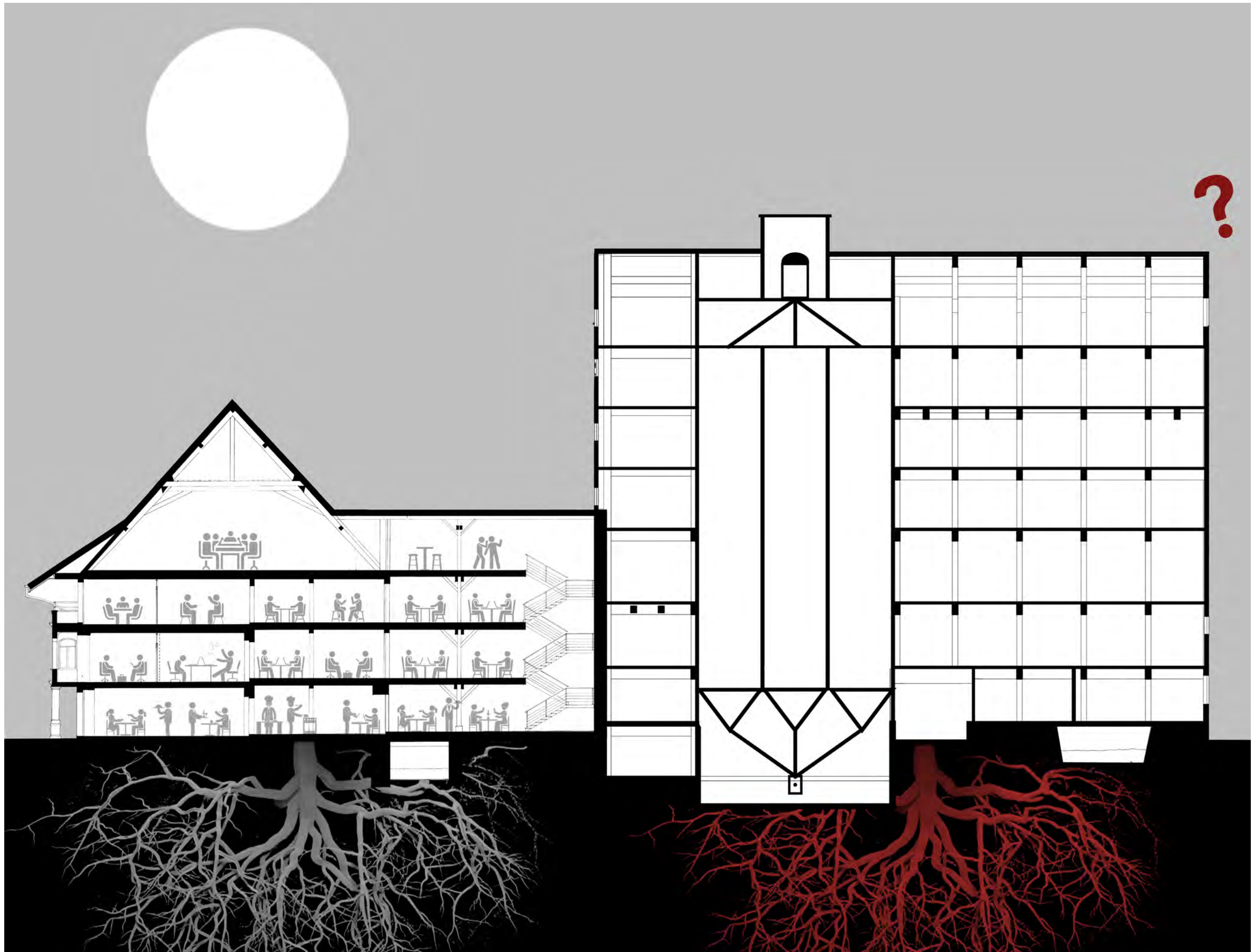
## **Abstract Englisch**

Klicken oder tippen Sie hier, um Text einzugeben.

Ort, Datum

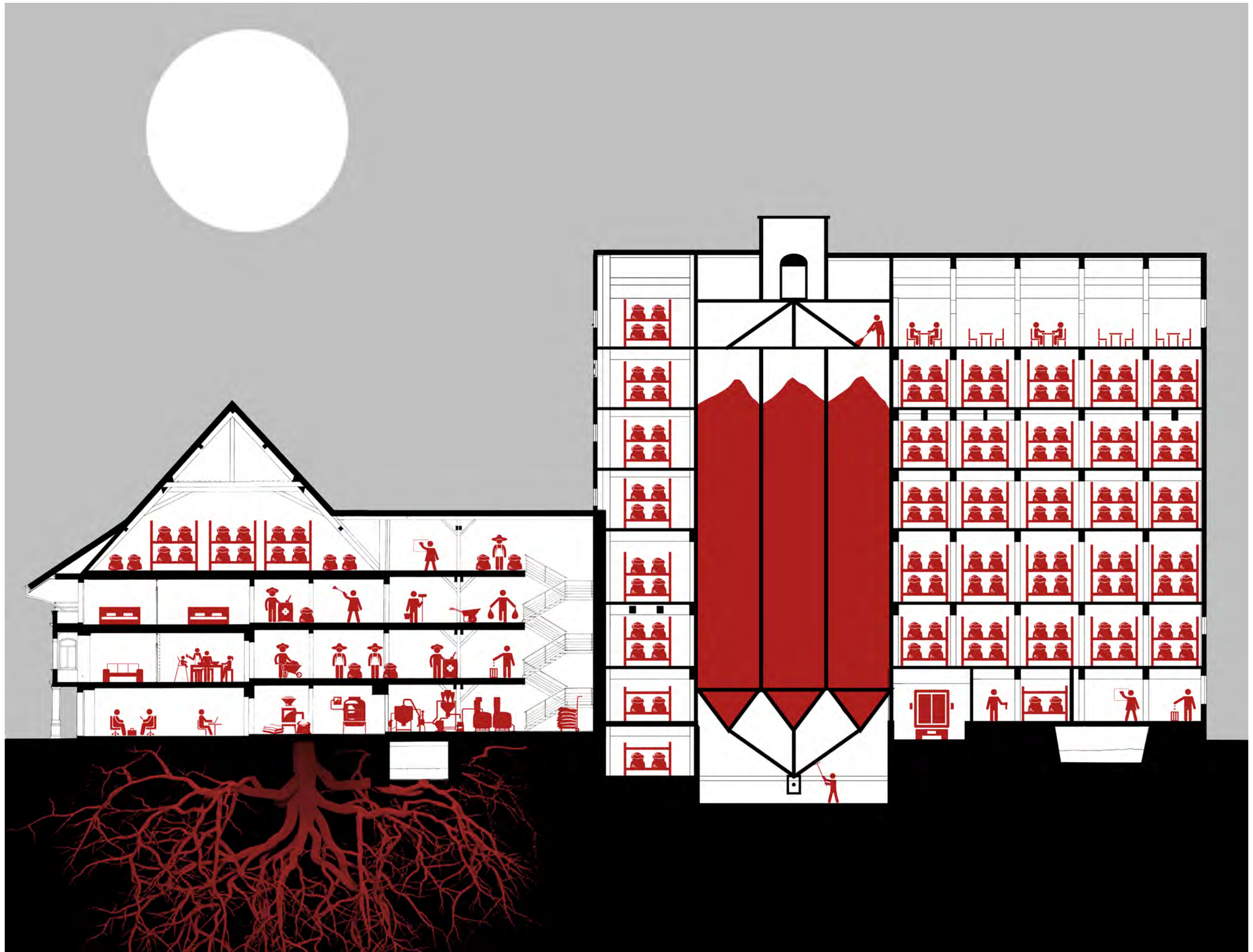
Bäch SZ, 17.06.2023

© **Jathushan Rajaratnam, Hochschule Luzern – Technik & Architektur**



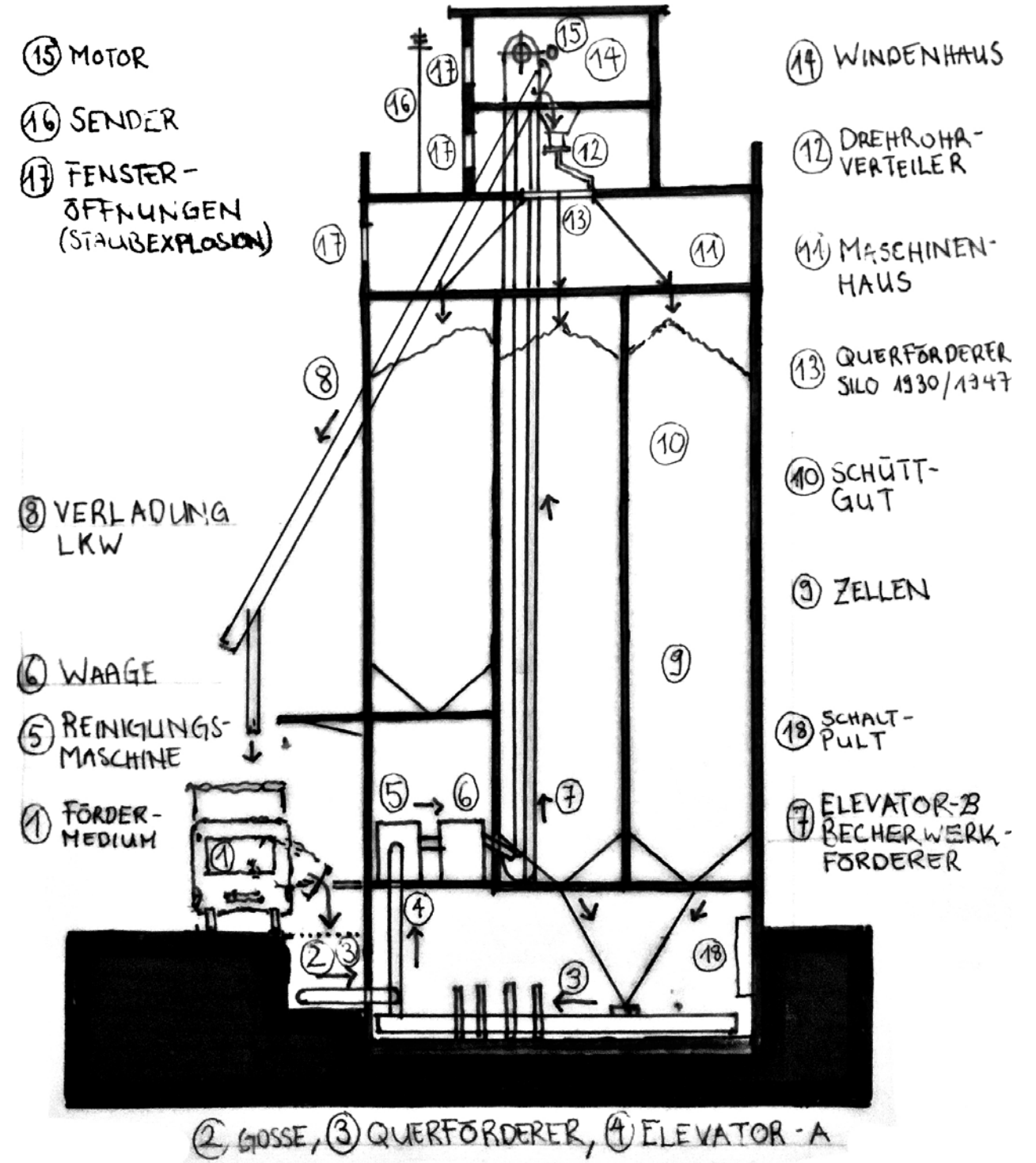
Rolle des Silogebäudes heute





Rolle des Silogebäudes vor 1990





Die vorhandene Technik und deren Funktionsweise

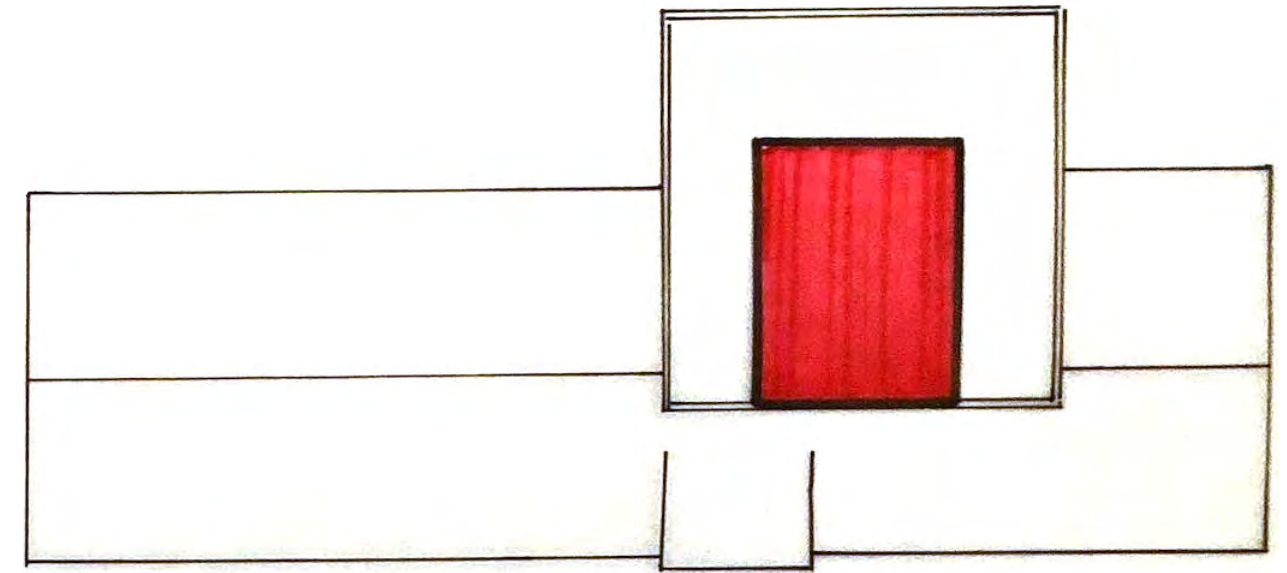
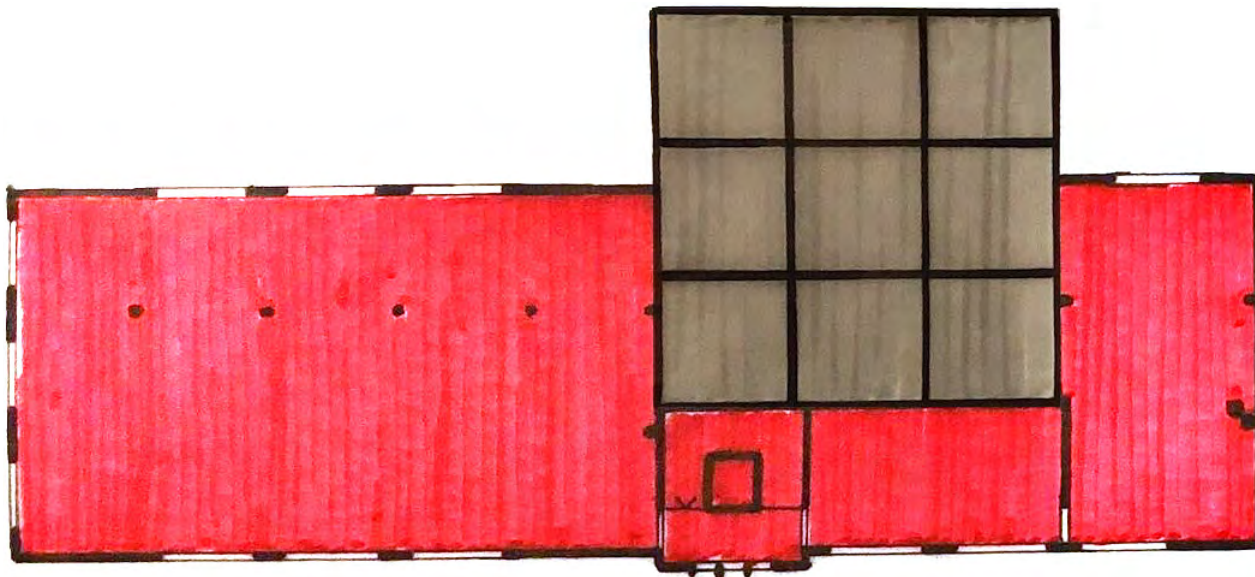
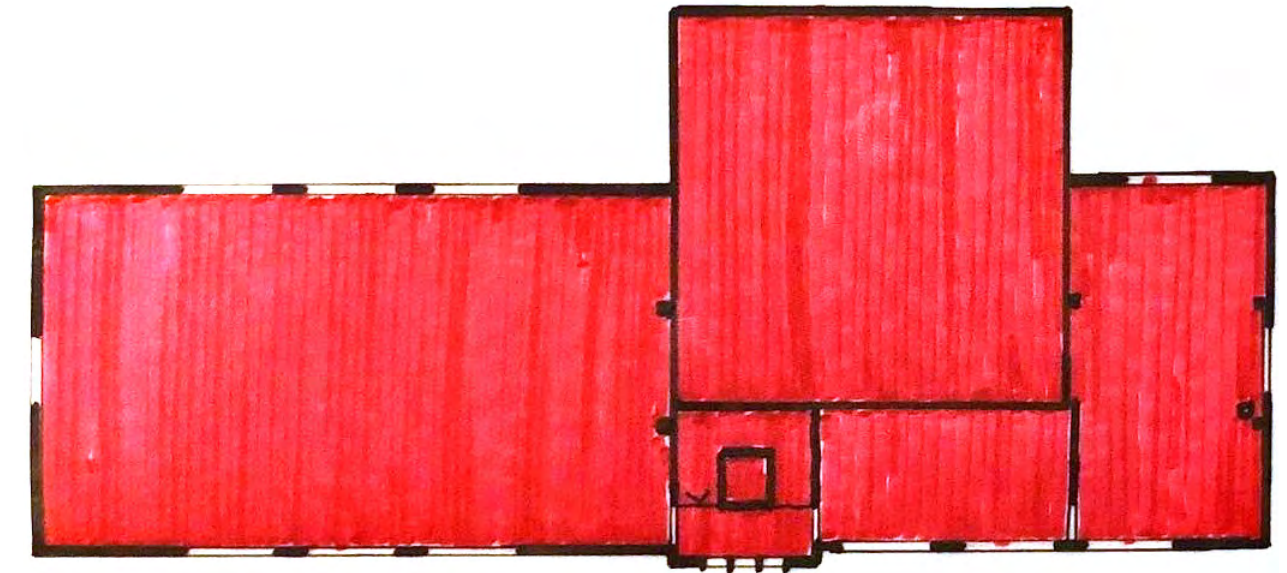
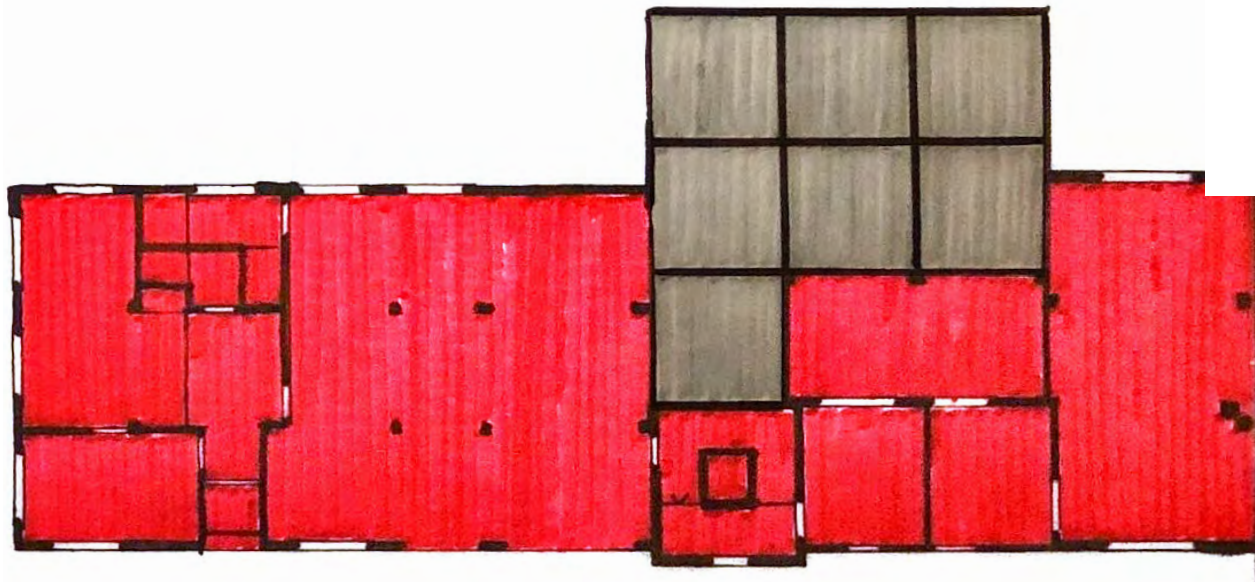
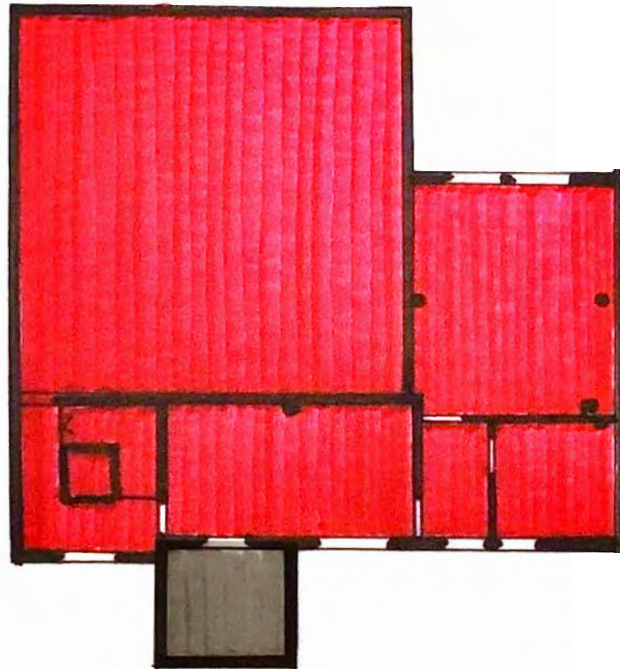




Das Silo als ein Typus



■ RAUM ERLEBBAR  
■ RAUM NICHT ERLEBBAR

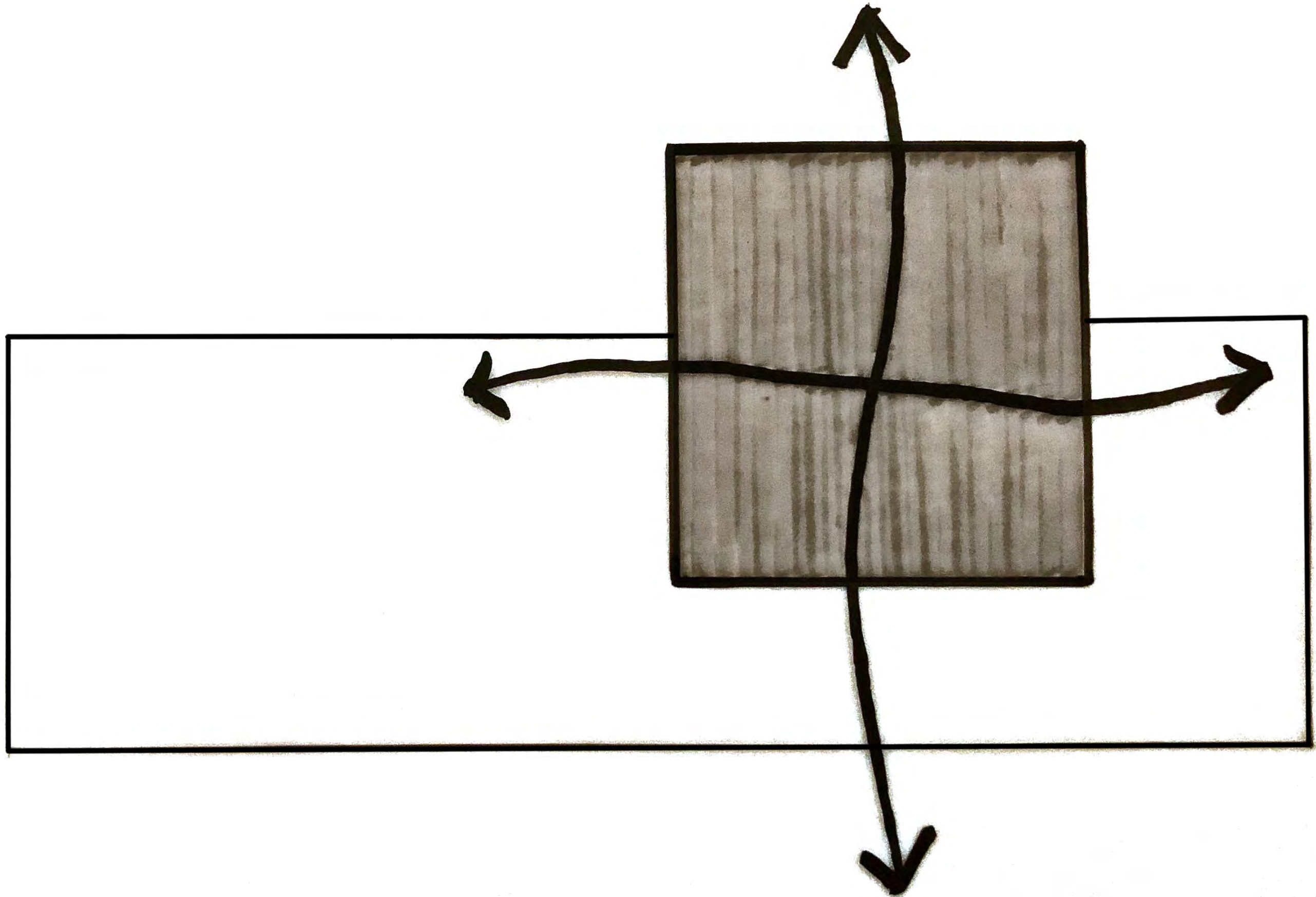


Räumliche Wahrnehmung Bestand

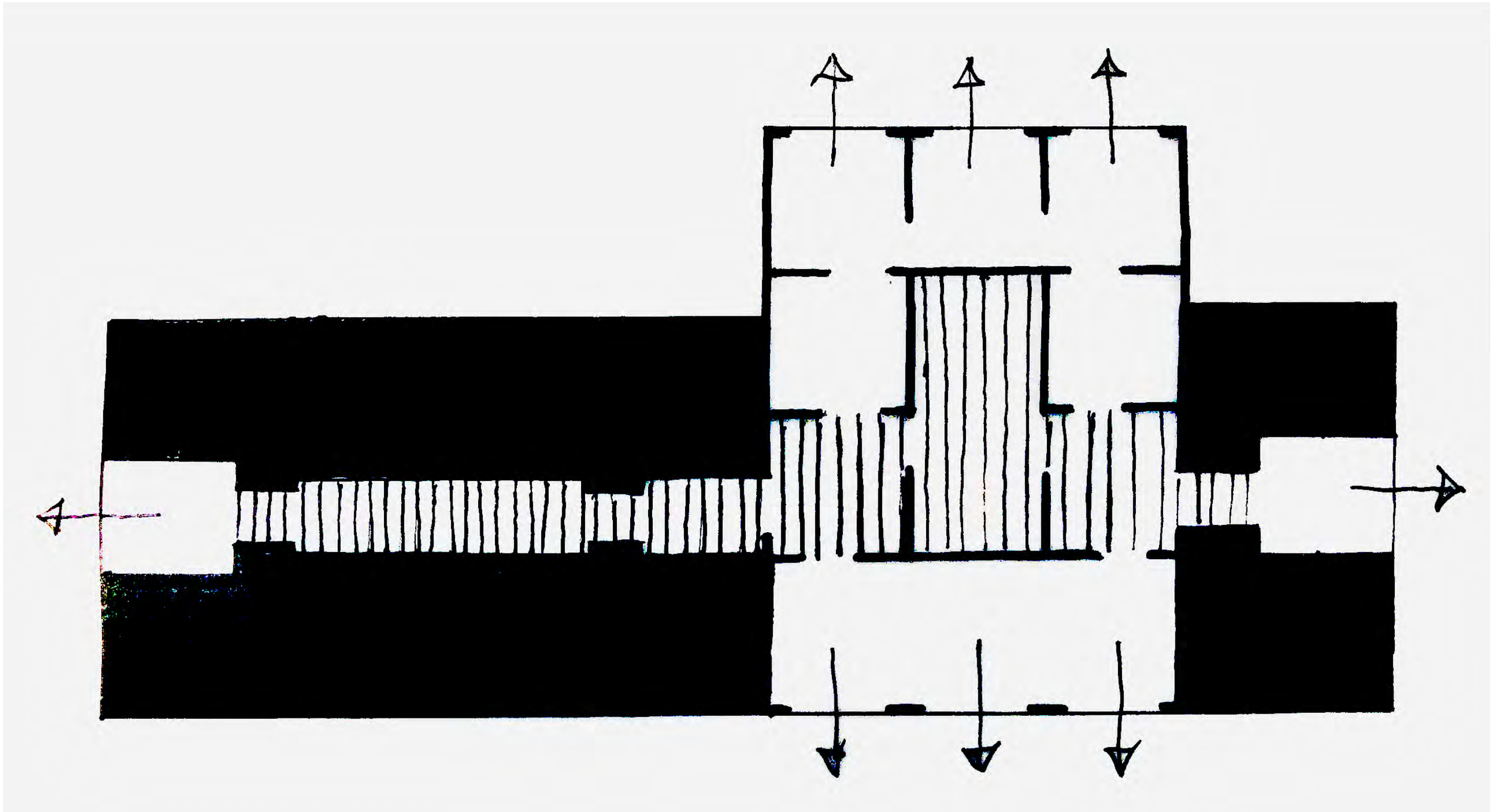


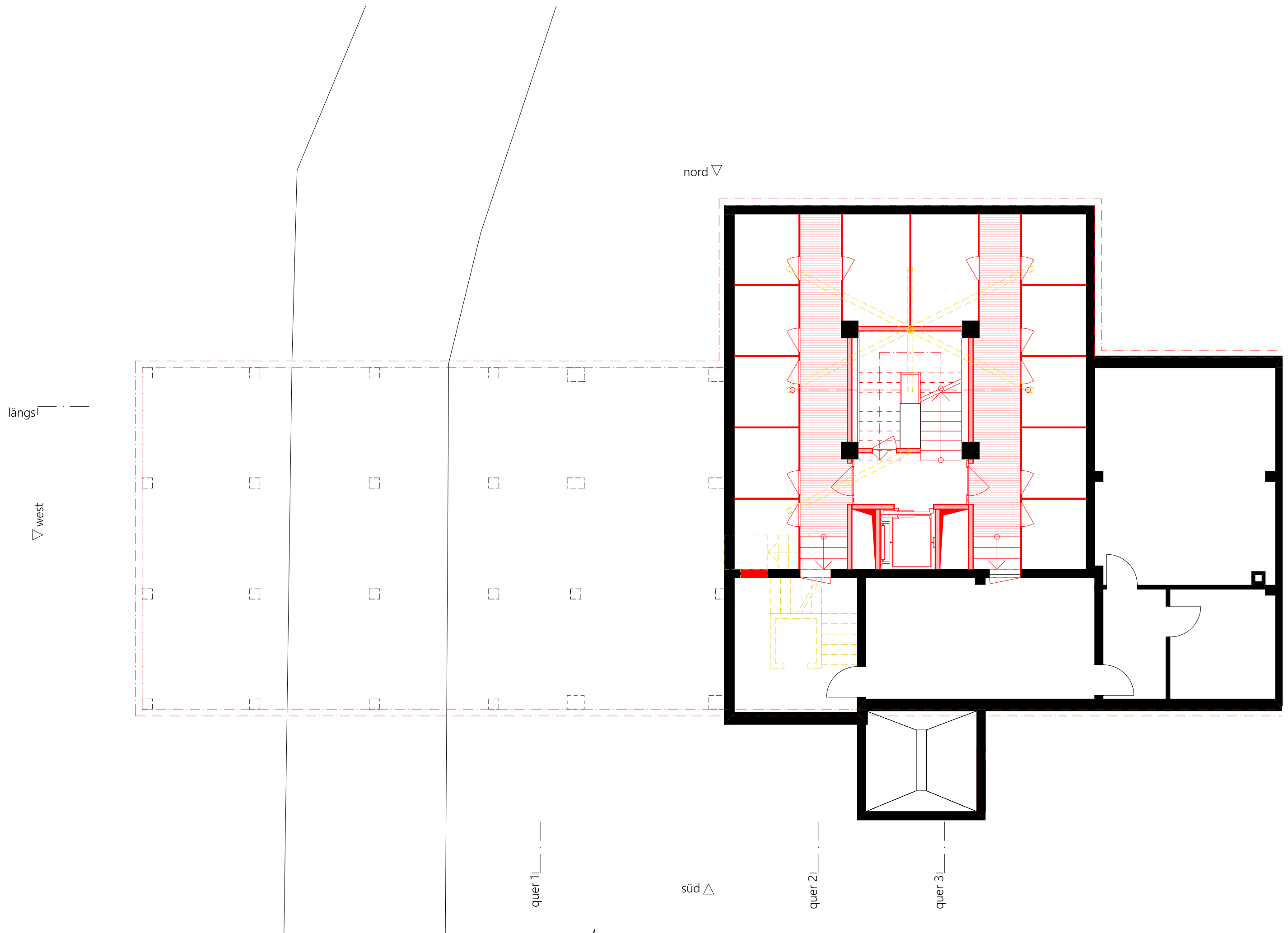


Konzeptmodell



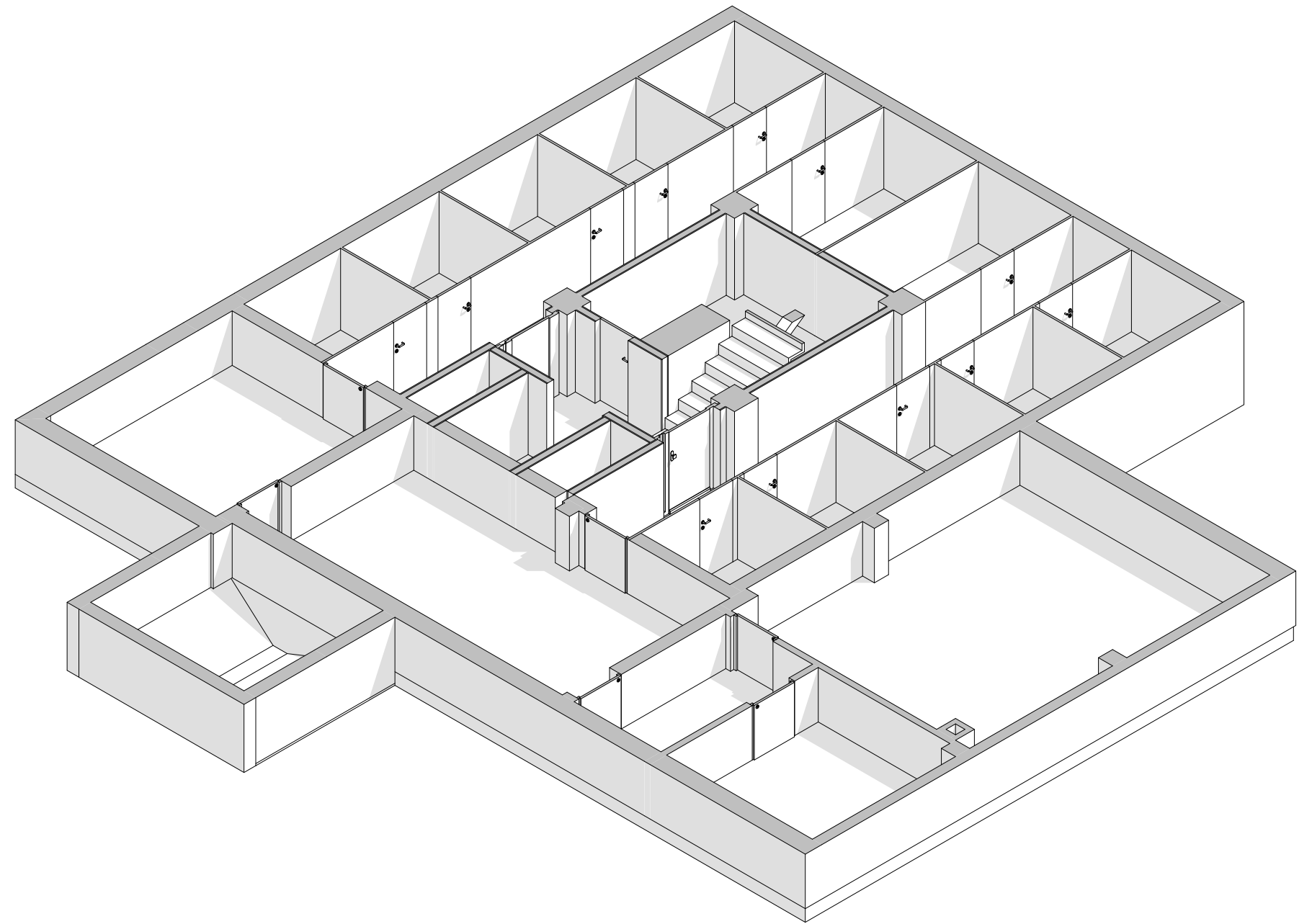




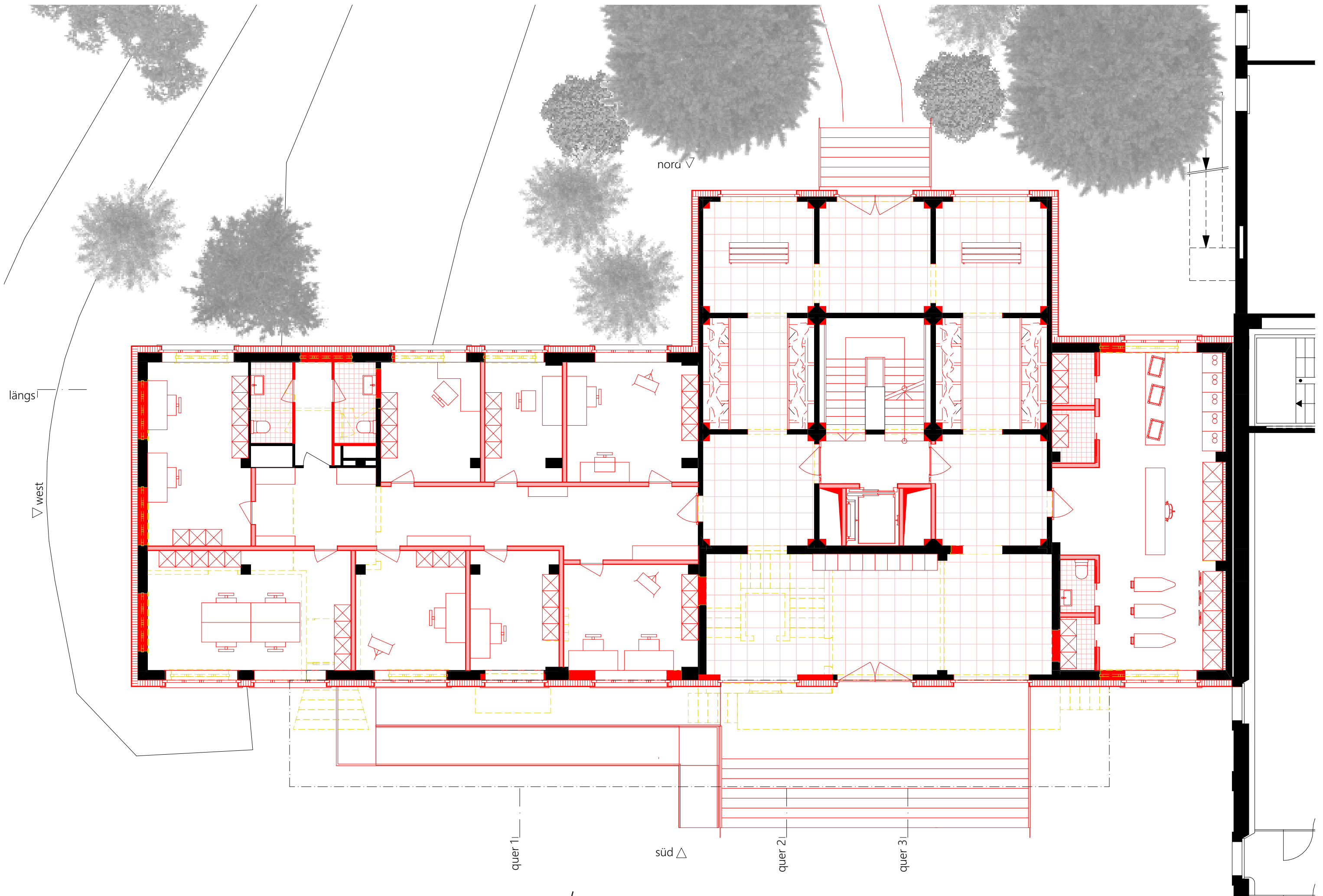



Untergeschoss 1:100



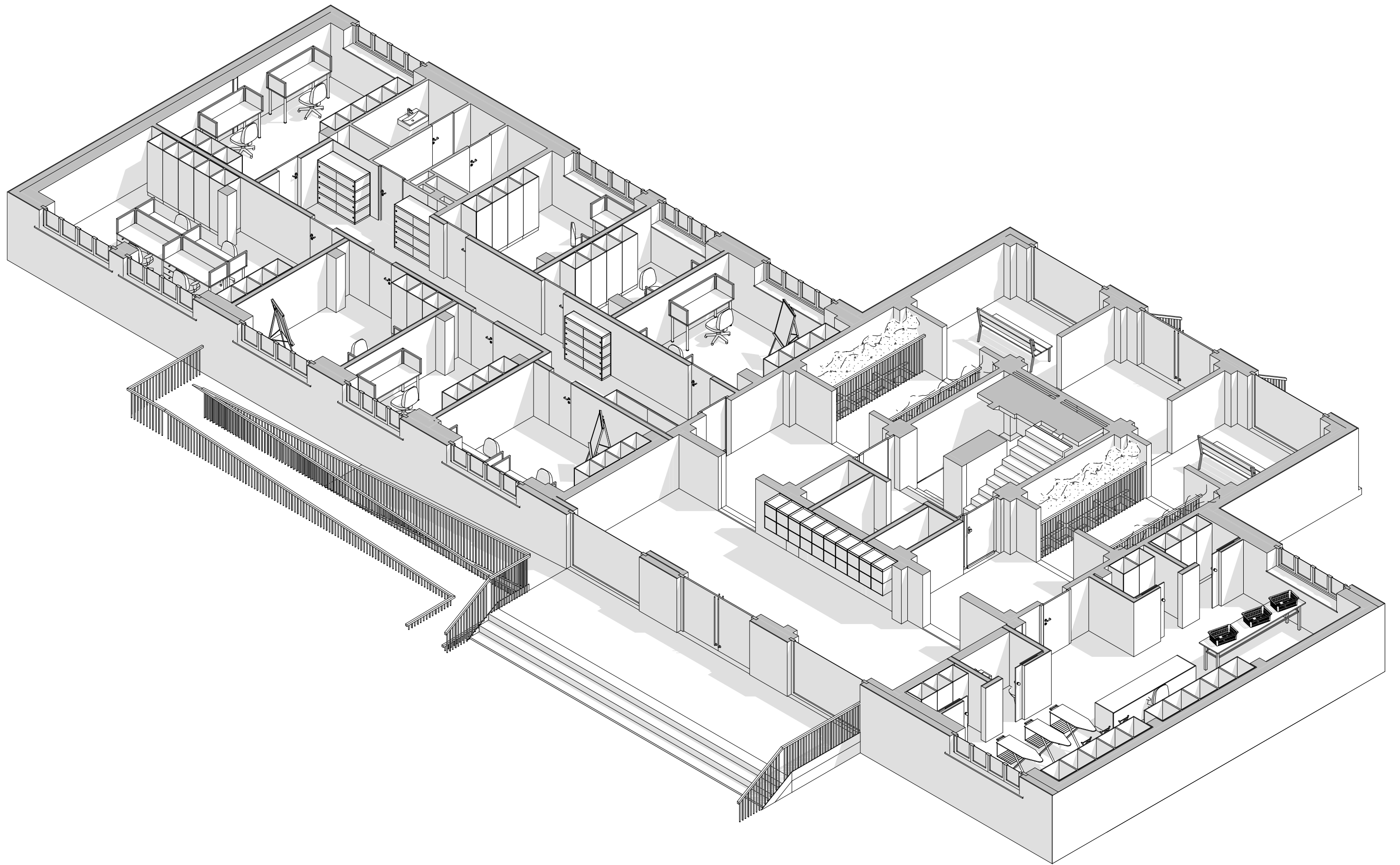


Endzustand Untergeschoss 1:100



 Erdgeschoss 1:100



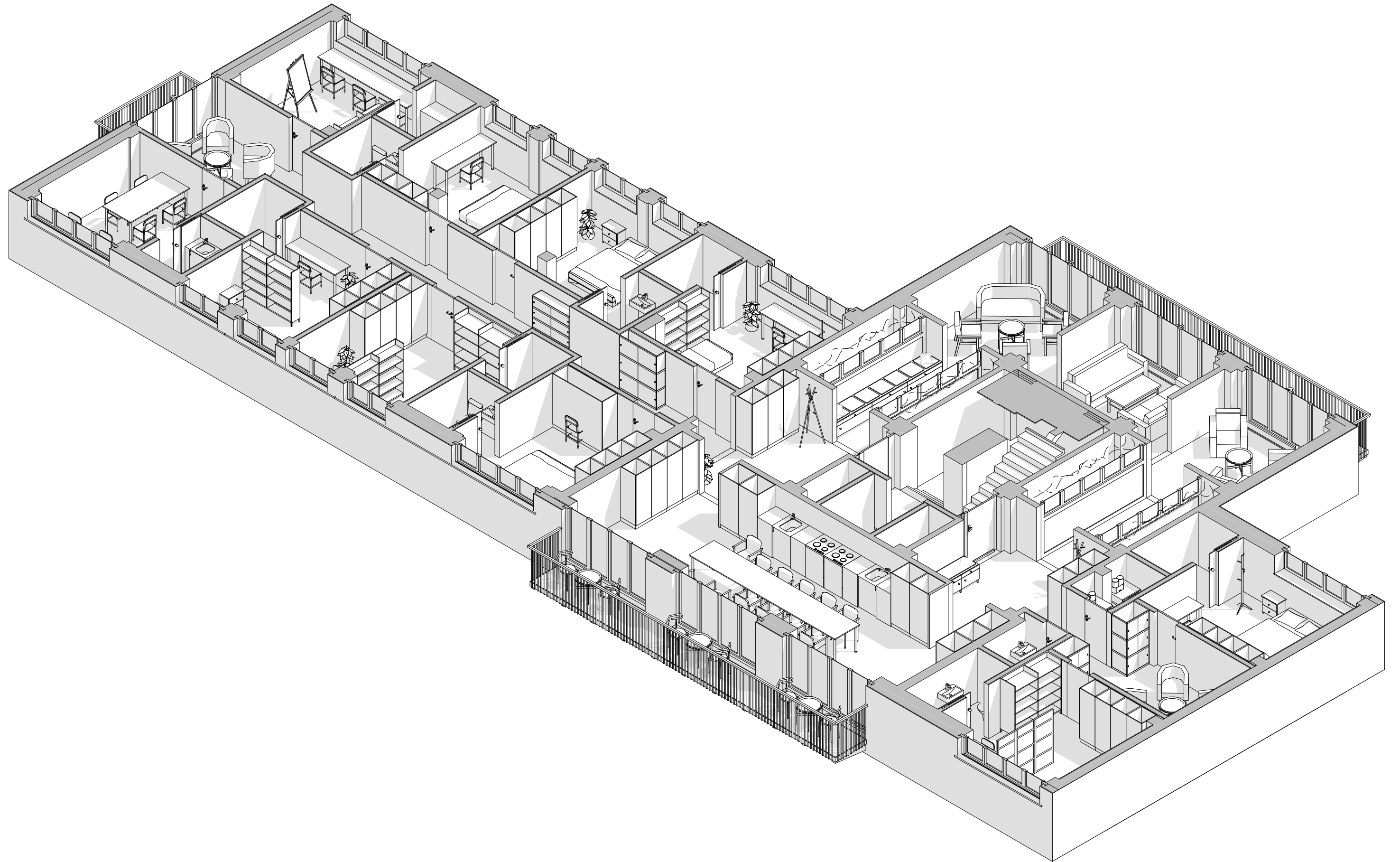


Endzustand Erdgeschoss 1:100



1.+2.Obergeschoss 1:100





Endzustand 1.+2.Obergeschoss 1:100



nord ▽

längs

west ▽

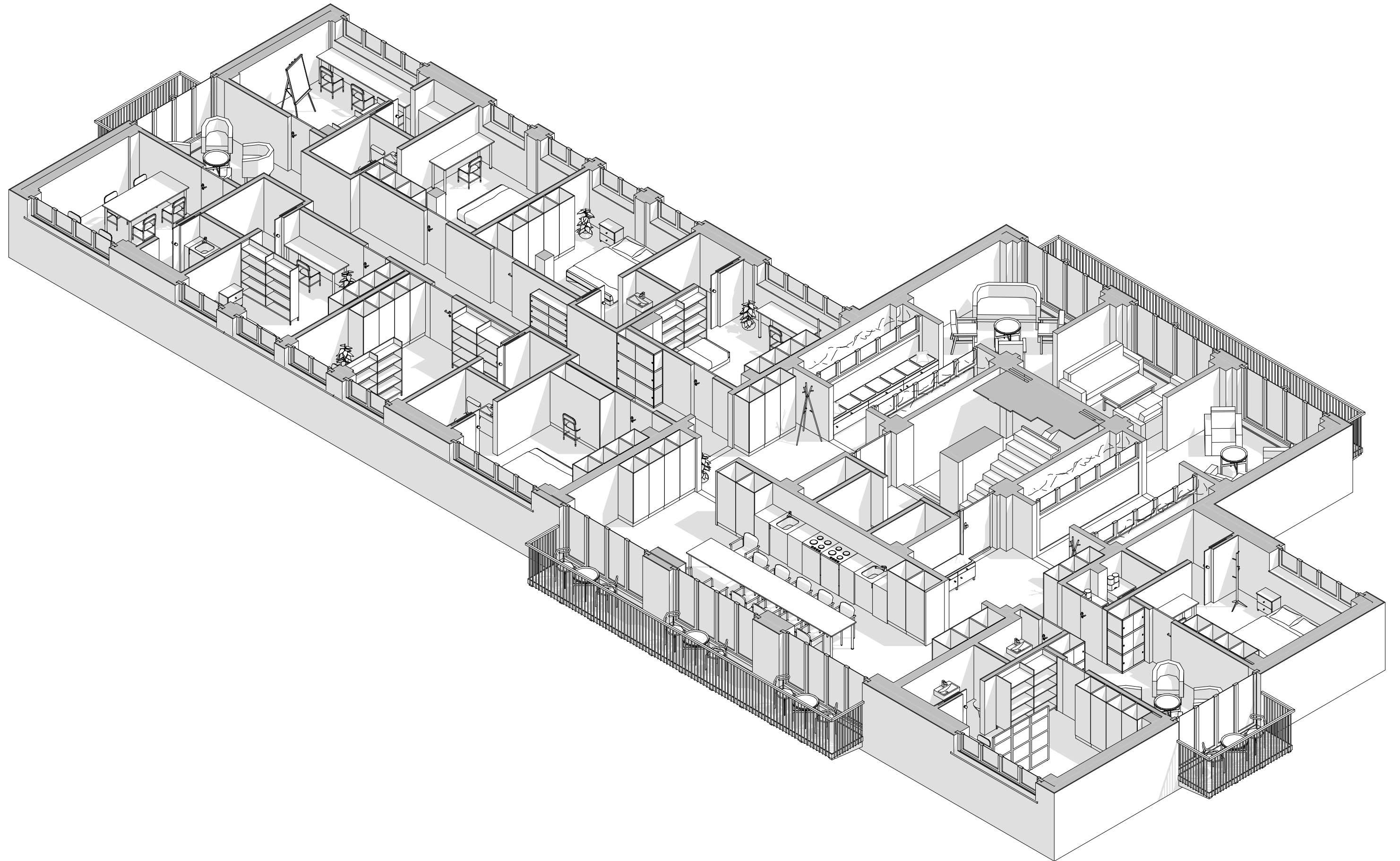
quer 1 | . . .

süd ▽

quer 2 | . . .

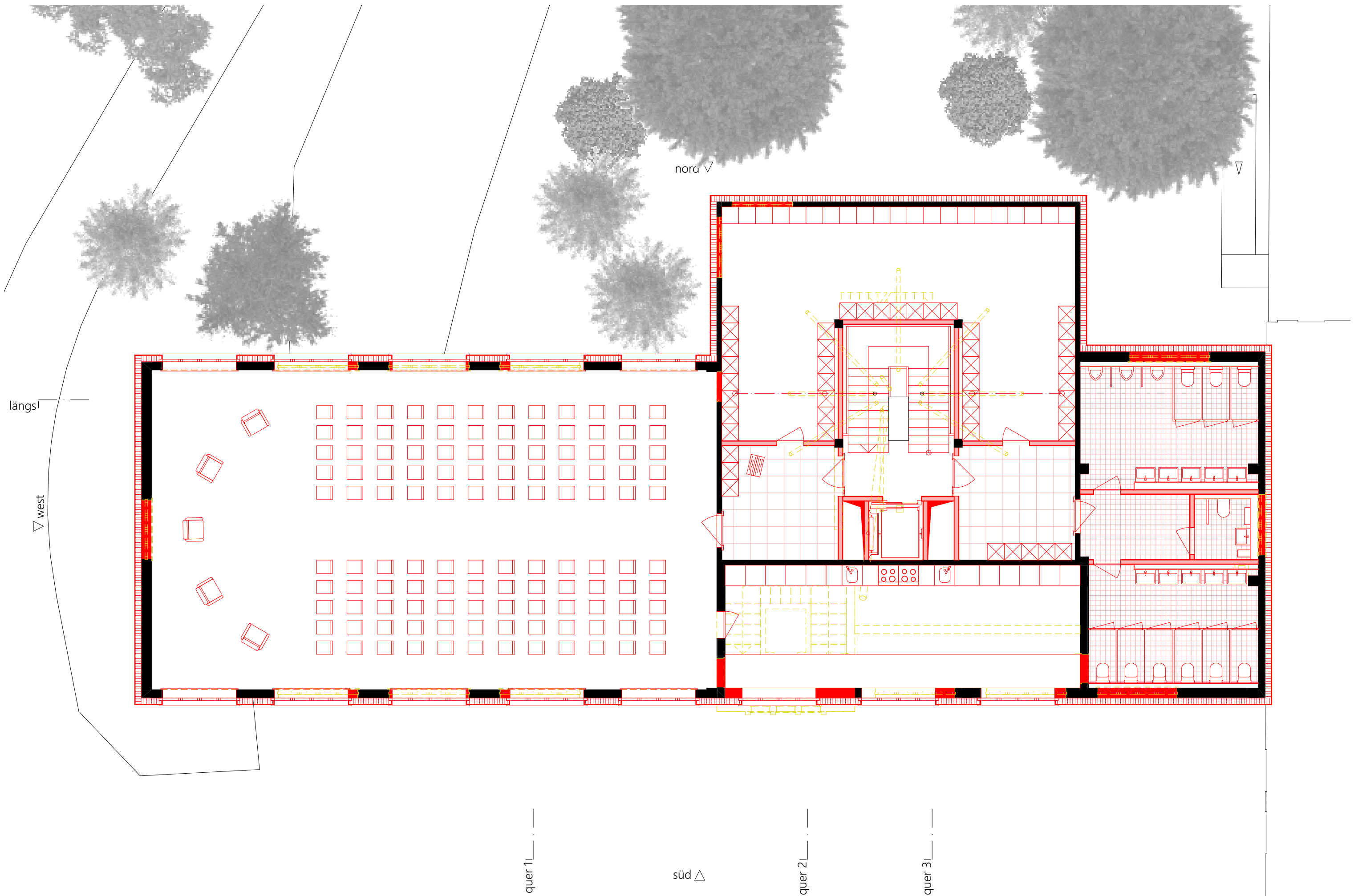
quer 3 | . . .


3.-5.Obergeschoss 1:100

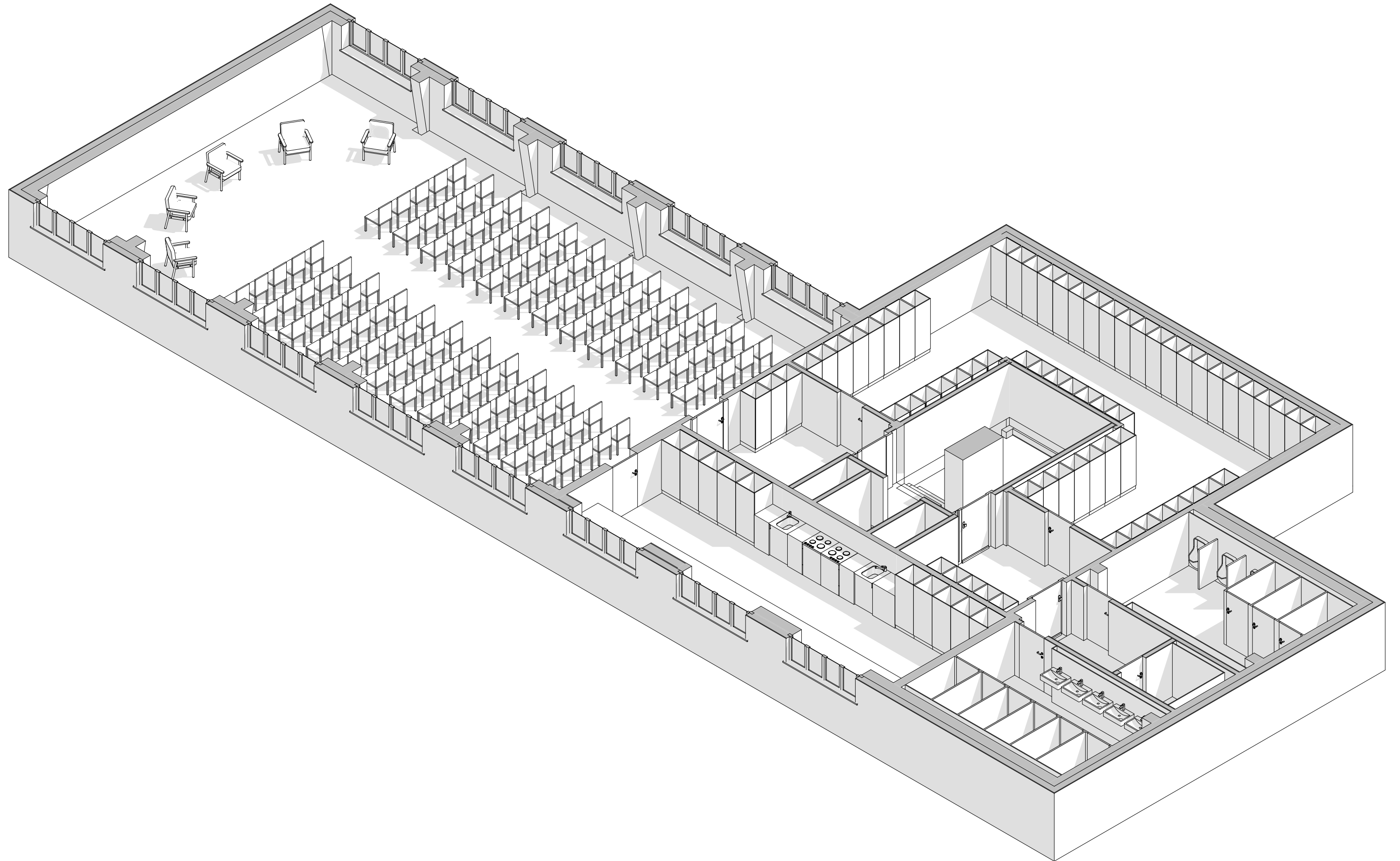


Endzustand 3.-5. Obergeschoss 1:100

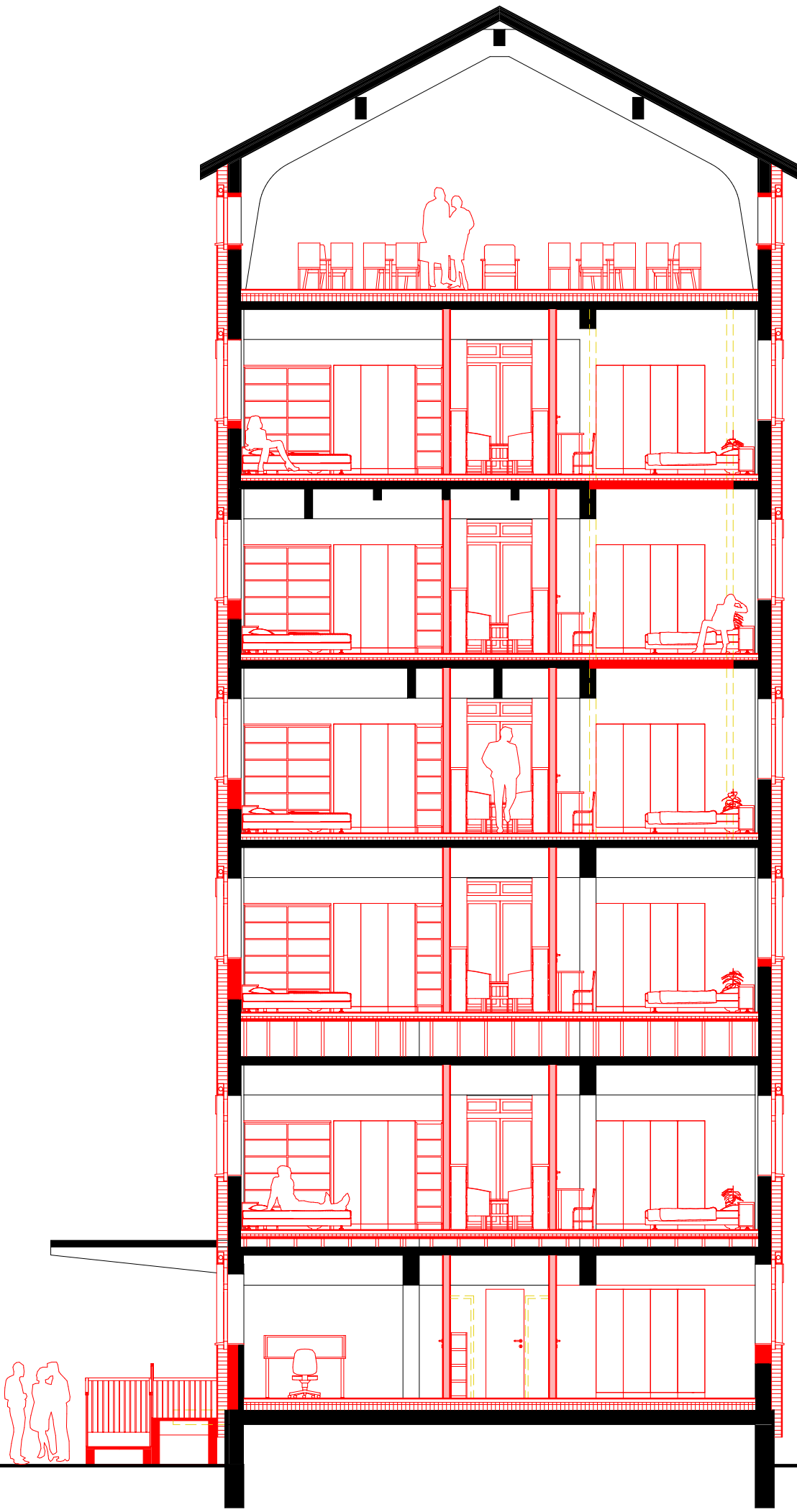




 Dachgeschoss 1:100



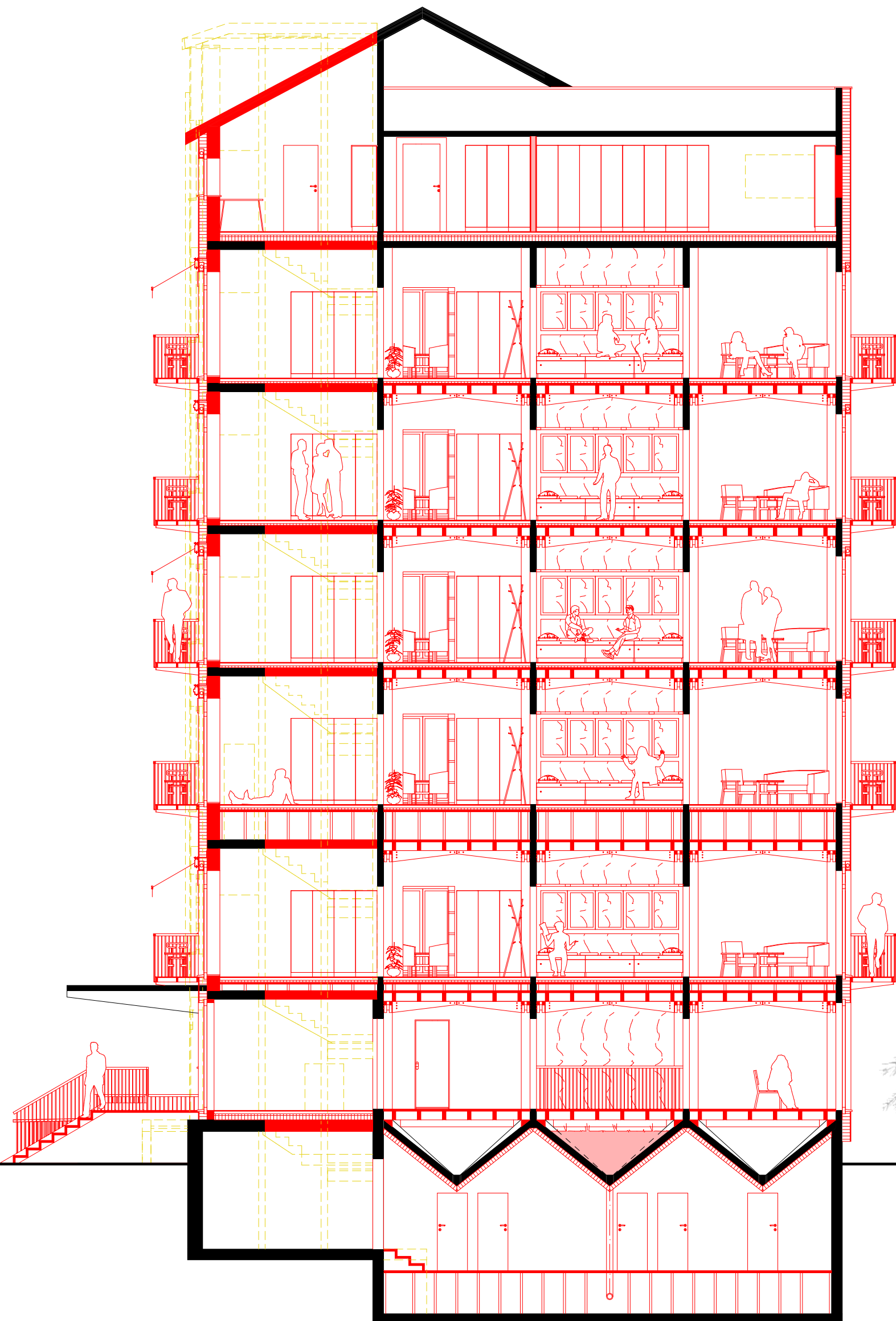
Endzustand Dachgeschoss 1:100



Querschnitt 1 1:100

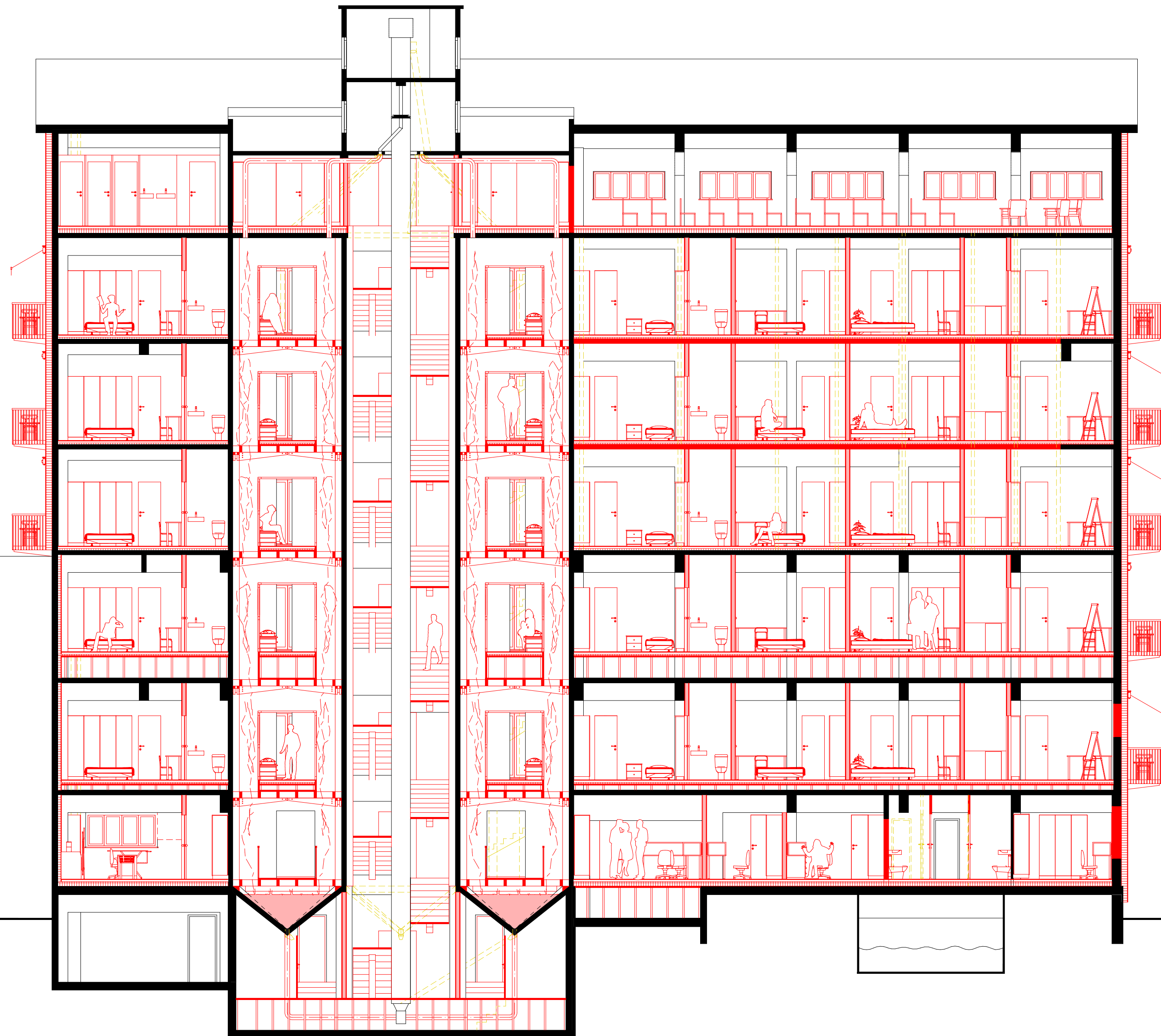






Querschnitt 3 1:100





Längsschnitt 1:100



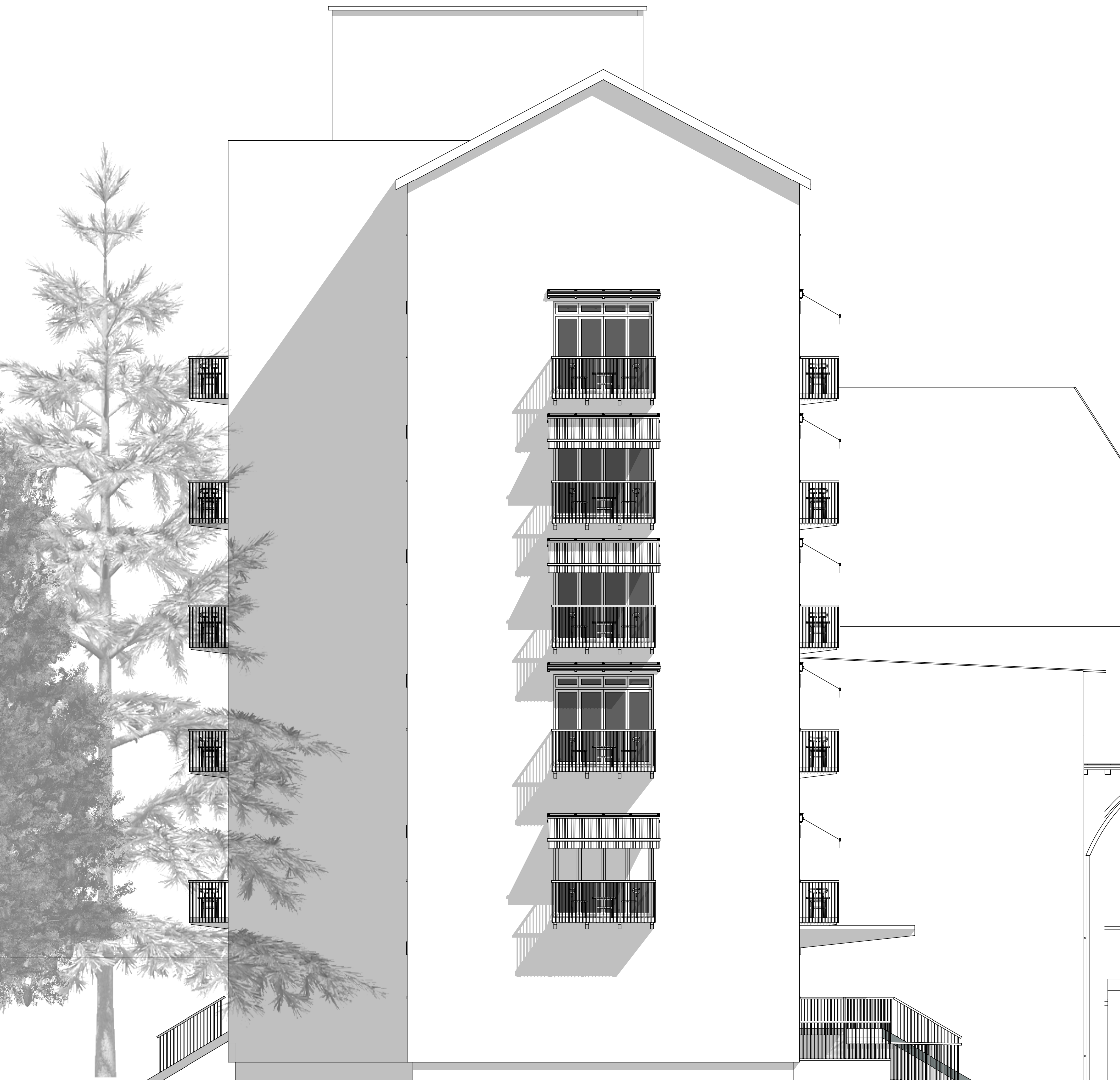
Südfassade 1:100





Nordfassade 1:100





Westfassade 1:100



