

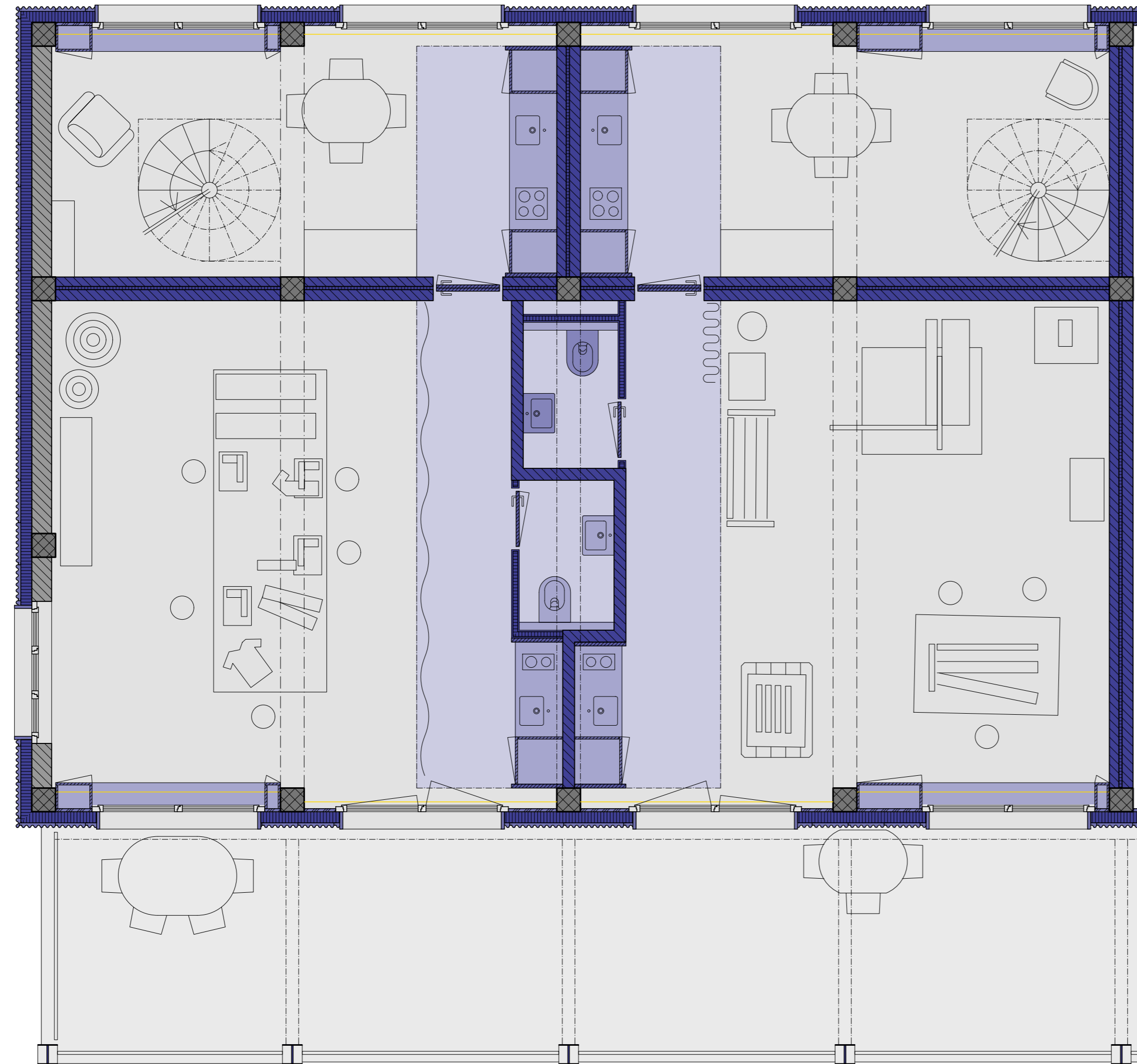




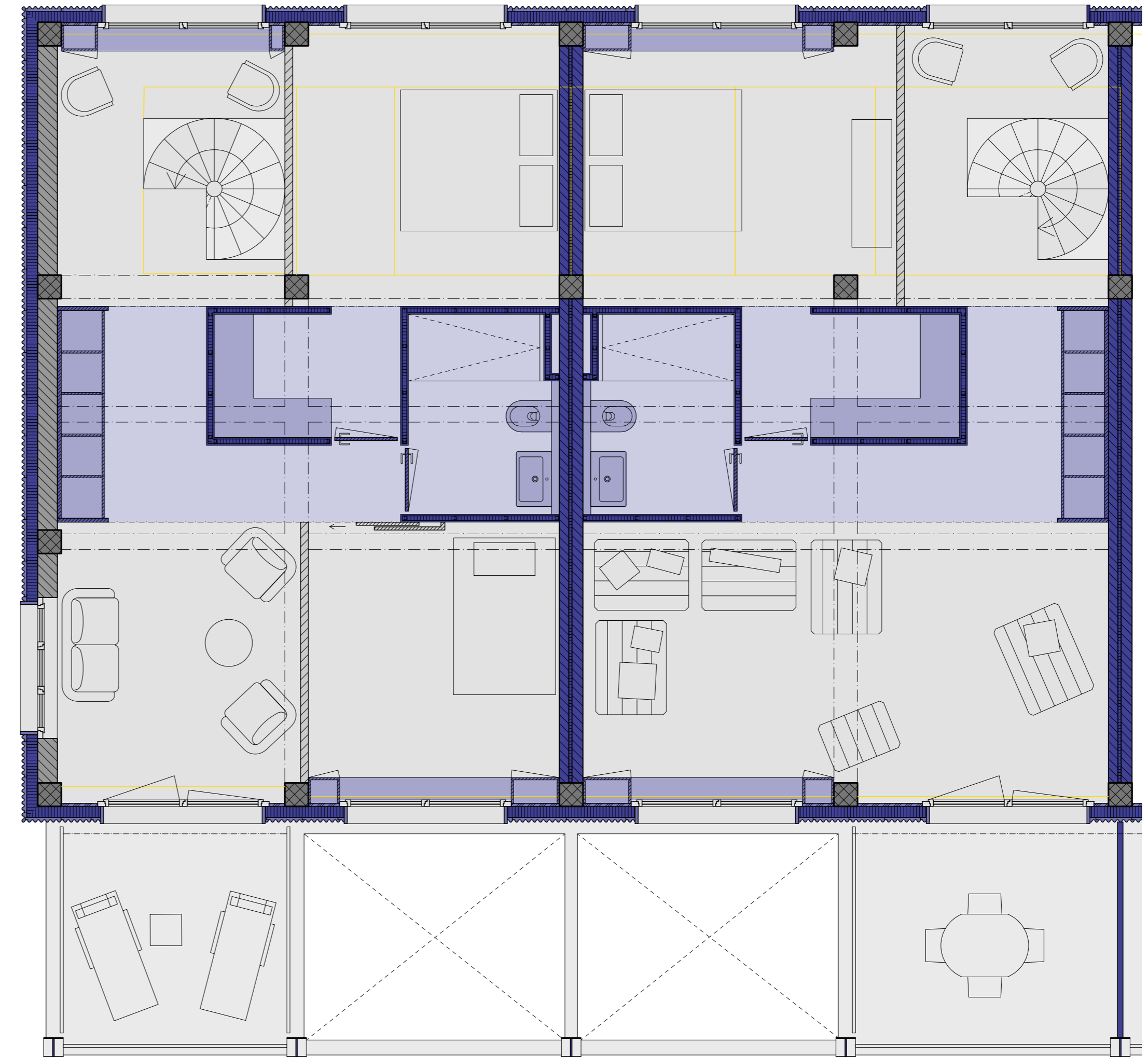


Atelierwohnungen

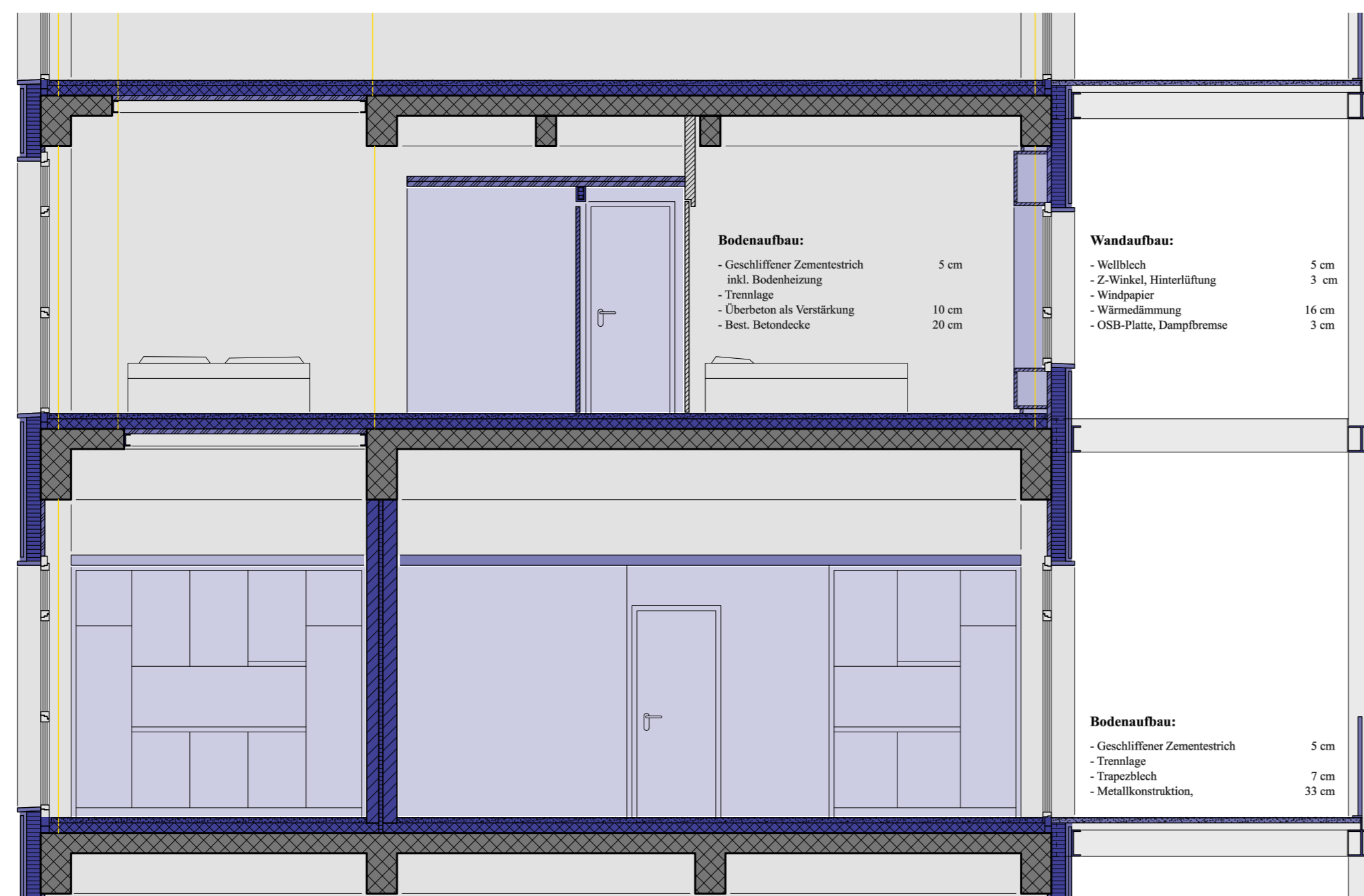
2. Obergeschoss



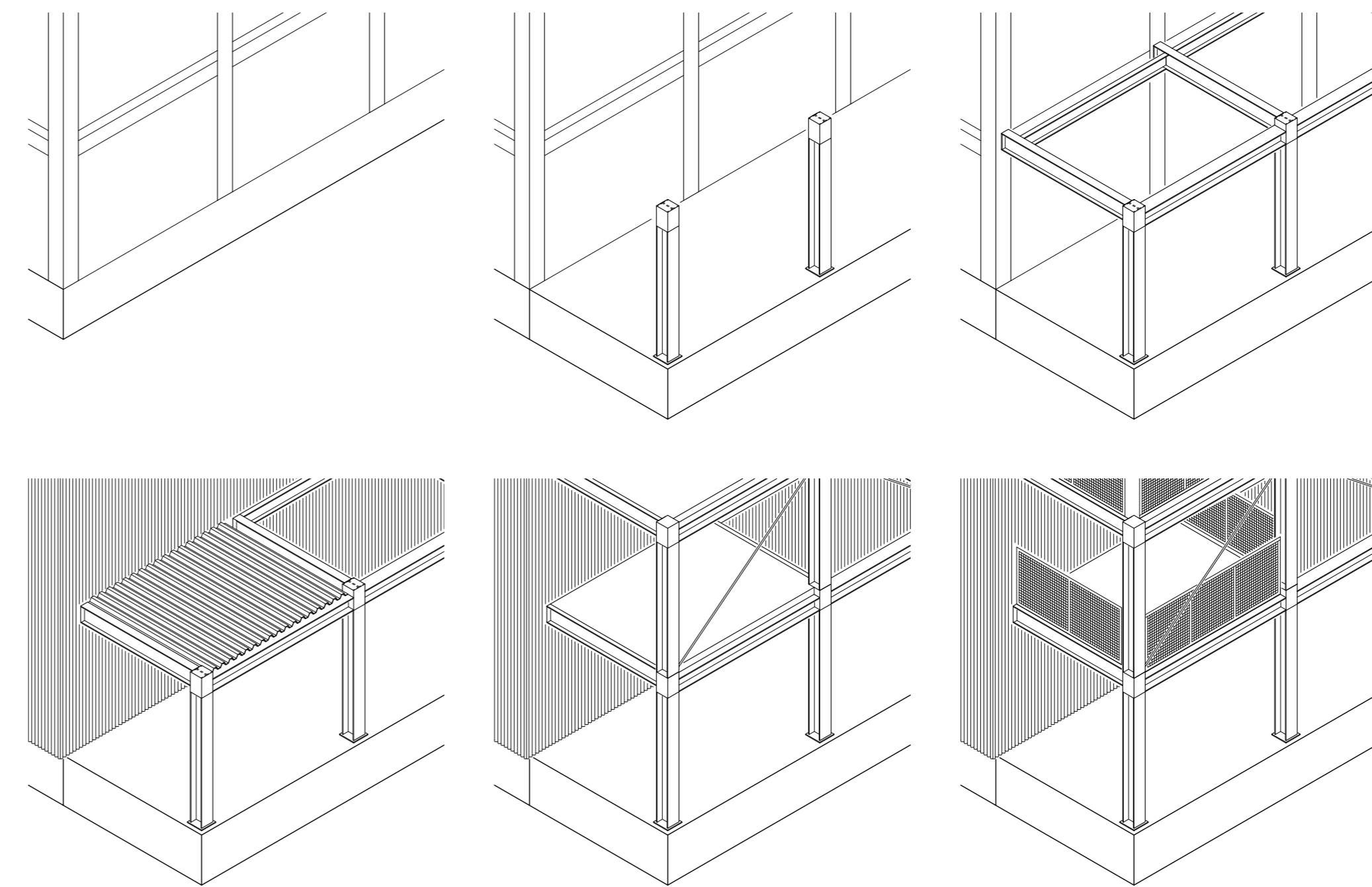
3. Obergeschoss



Schnitt



Konstruktionsprinzip

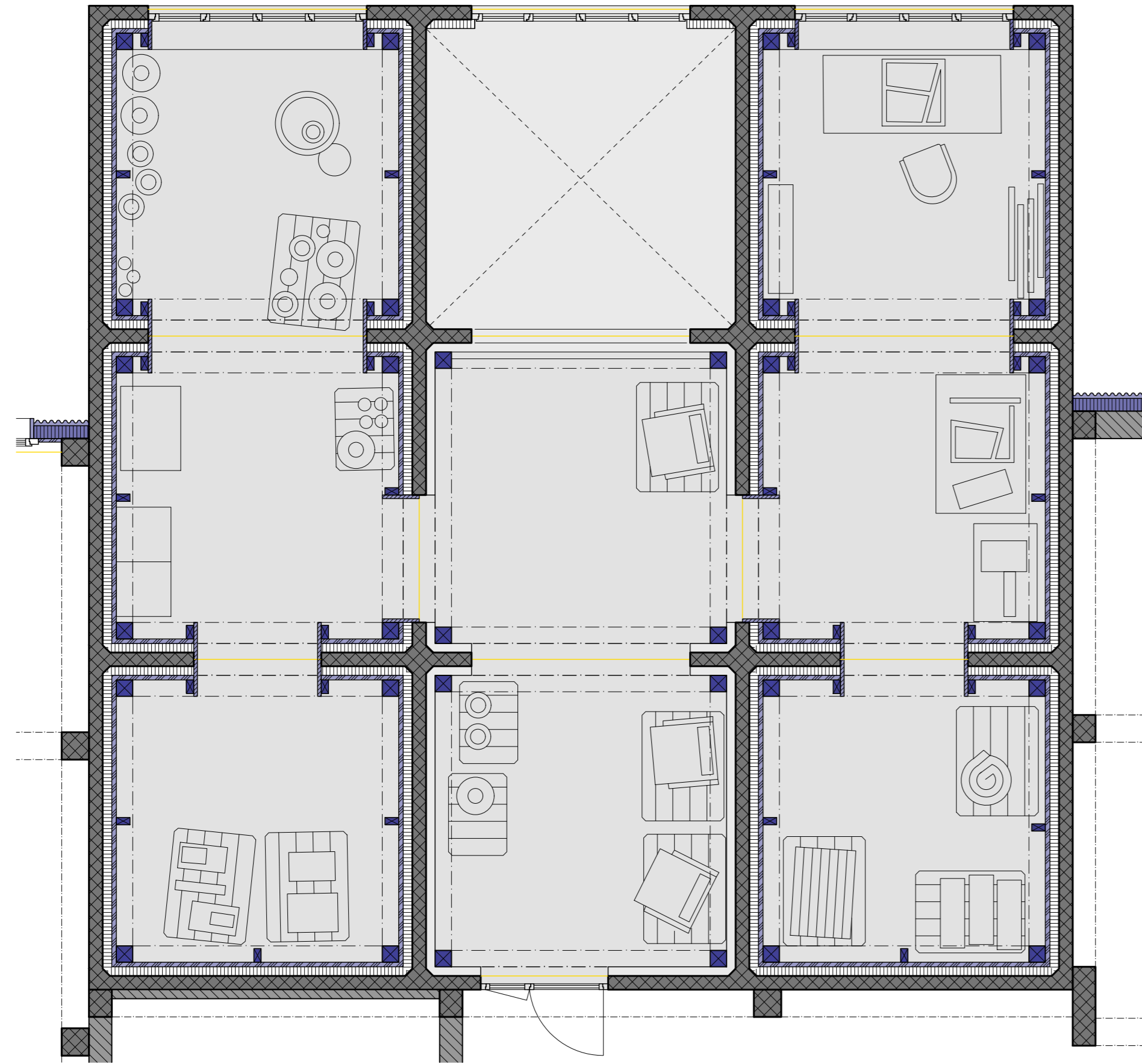




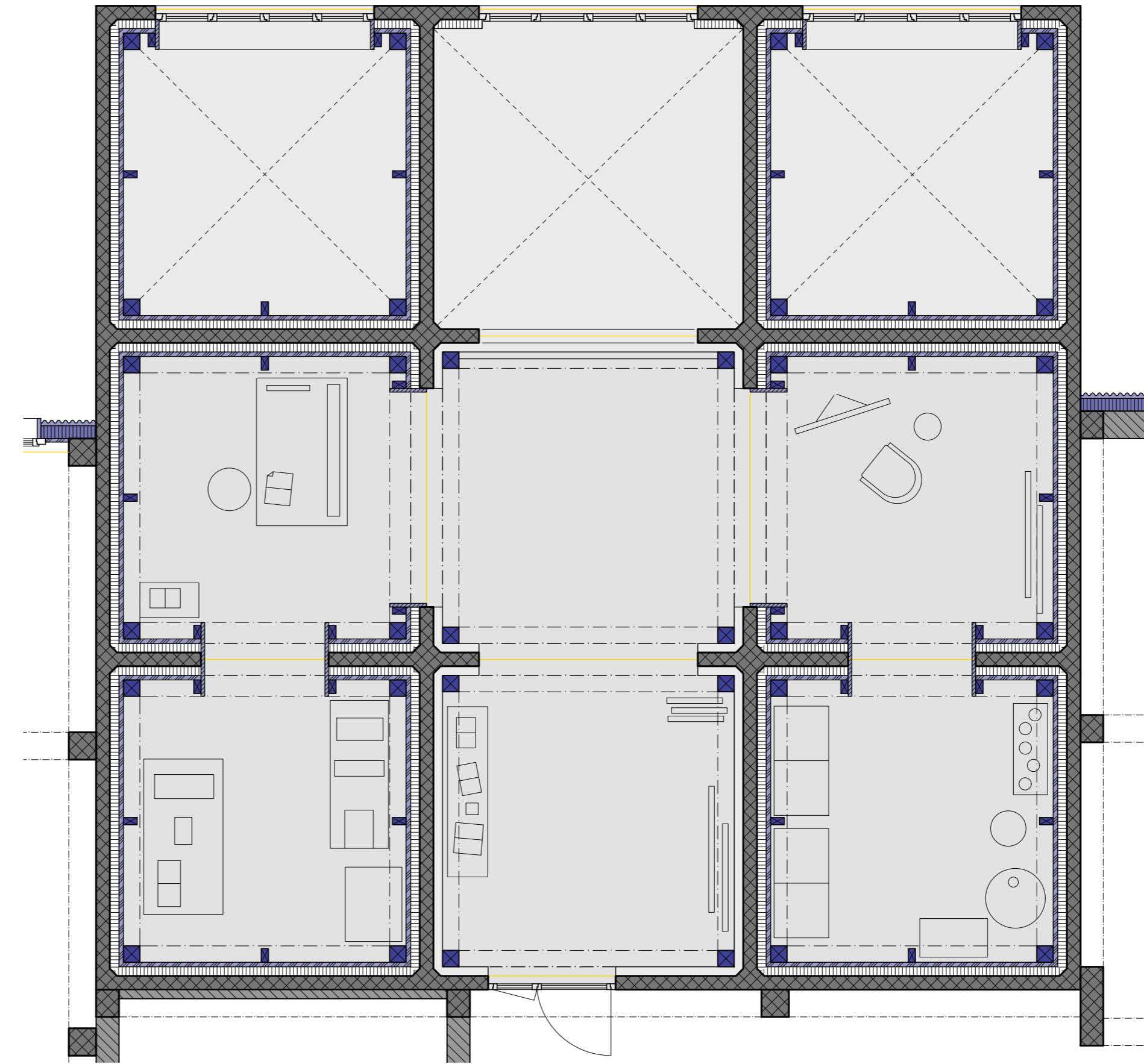


Werkstatt

4. Obergeschoss



5. Obergeschoss



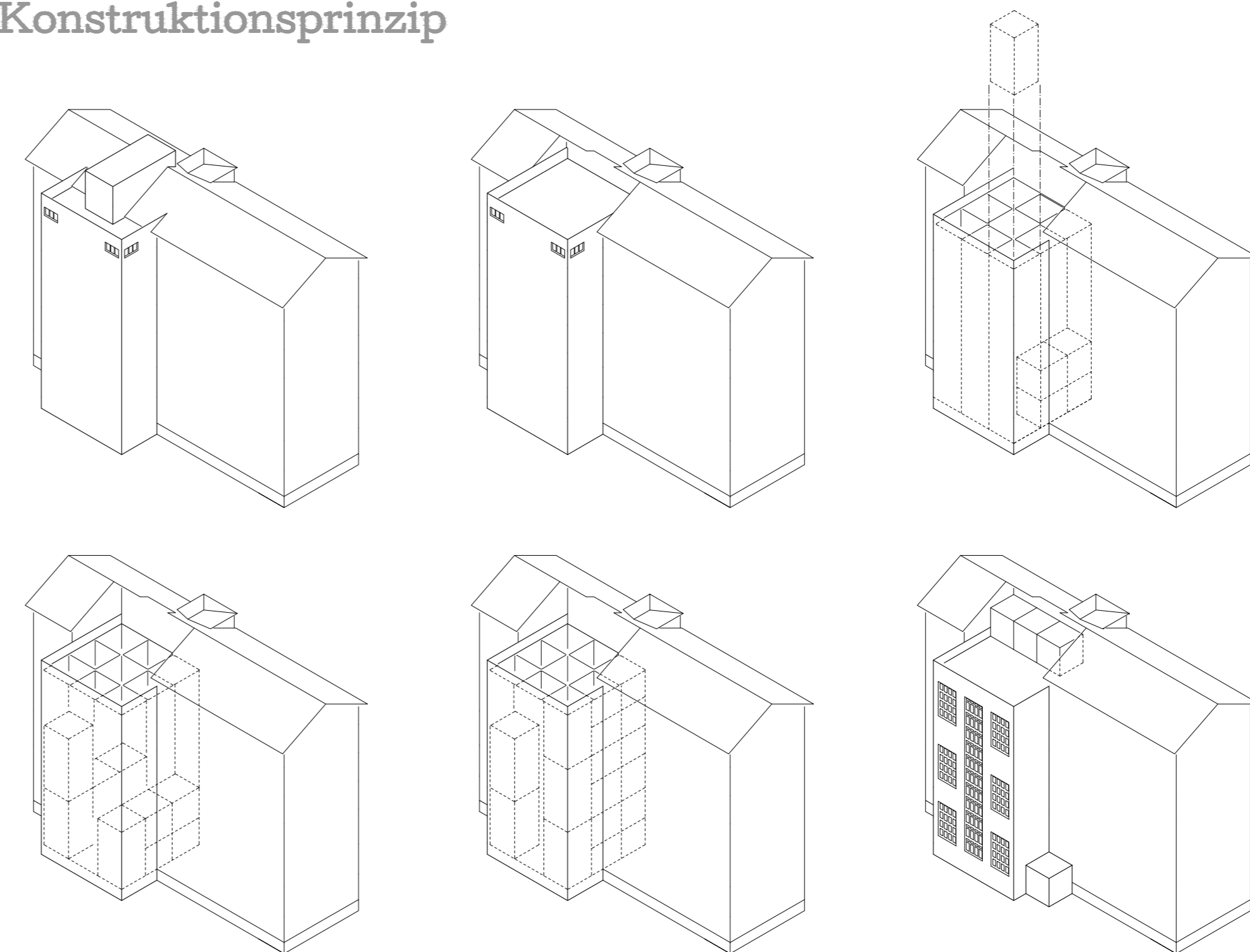
Schnitt



- Wandaufbau:**
- Bestehende Betonschicht ausbessern 15 cm
 - Bestehende Stützwand
 - Wärmedämmung, Anstrichung während der Bauphase toleranzraum 10 cm
 - Werktafelbauweise 5 cm
 - Dreischichtplatte Holztragkonstruktion 18 cm

- Bodenaufbau:**
- obere Werkstattbox 5 cm
 - Holzdielen
 - Holzbohlen, dazw. Schüttung 12 cm
 - untere Werkstattbox 3 cm
 - Dreischichtplatte Holzbohlen 24 cm

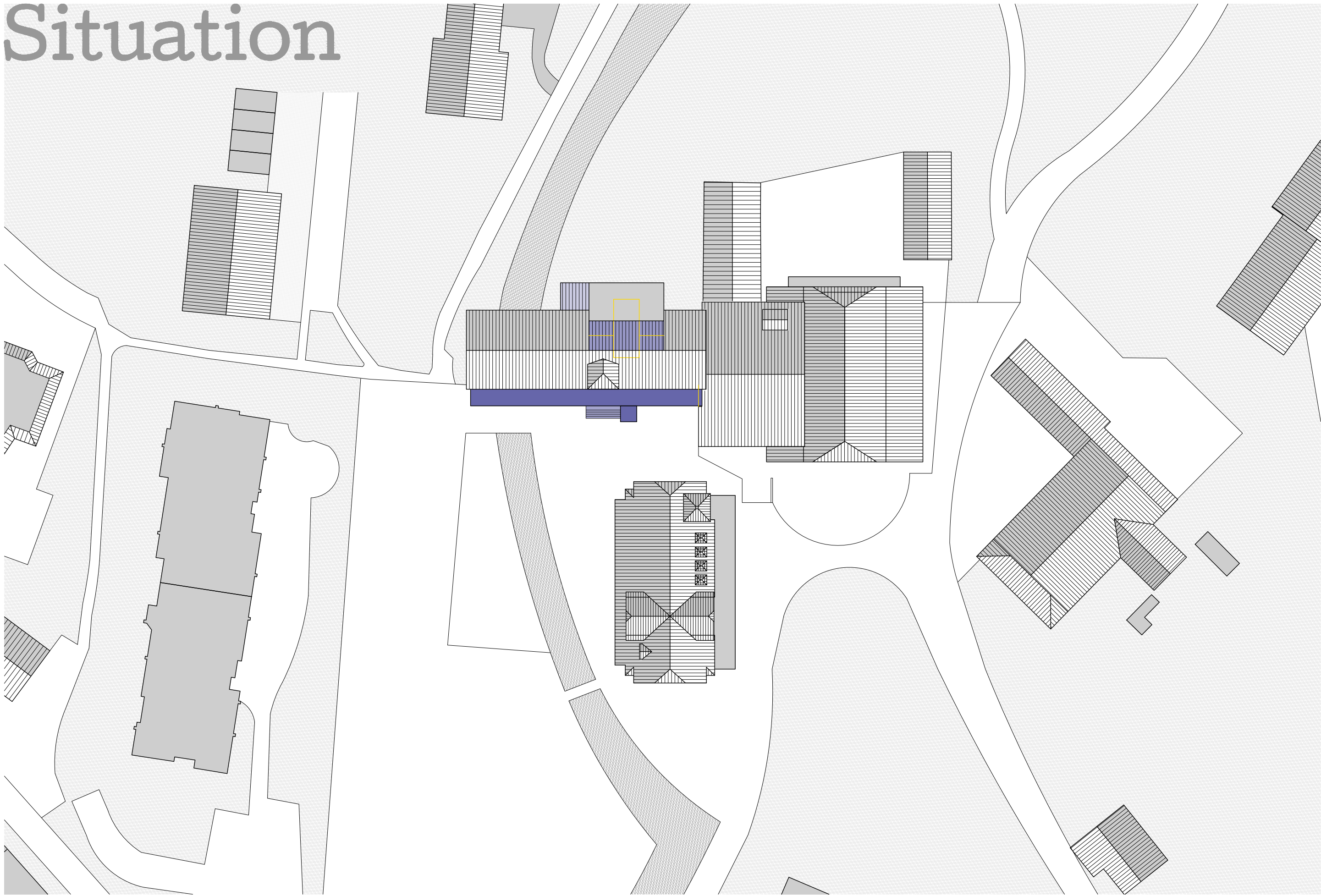
Konstruktionsprinzip



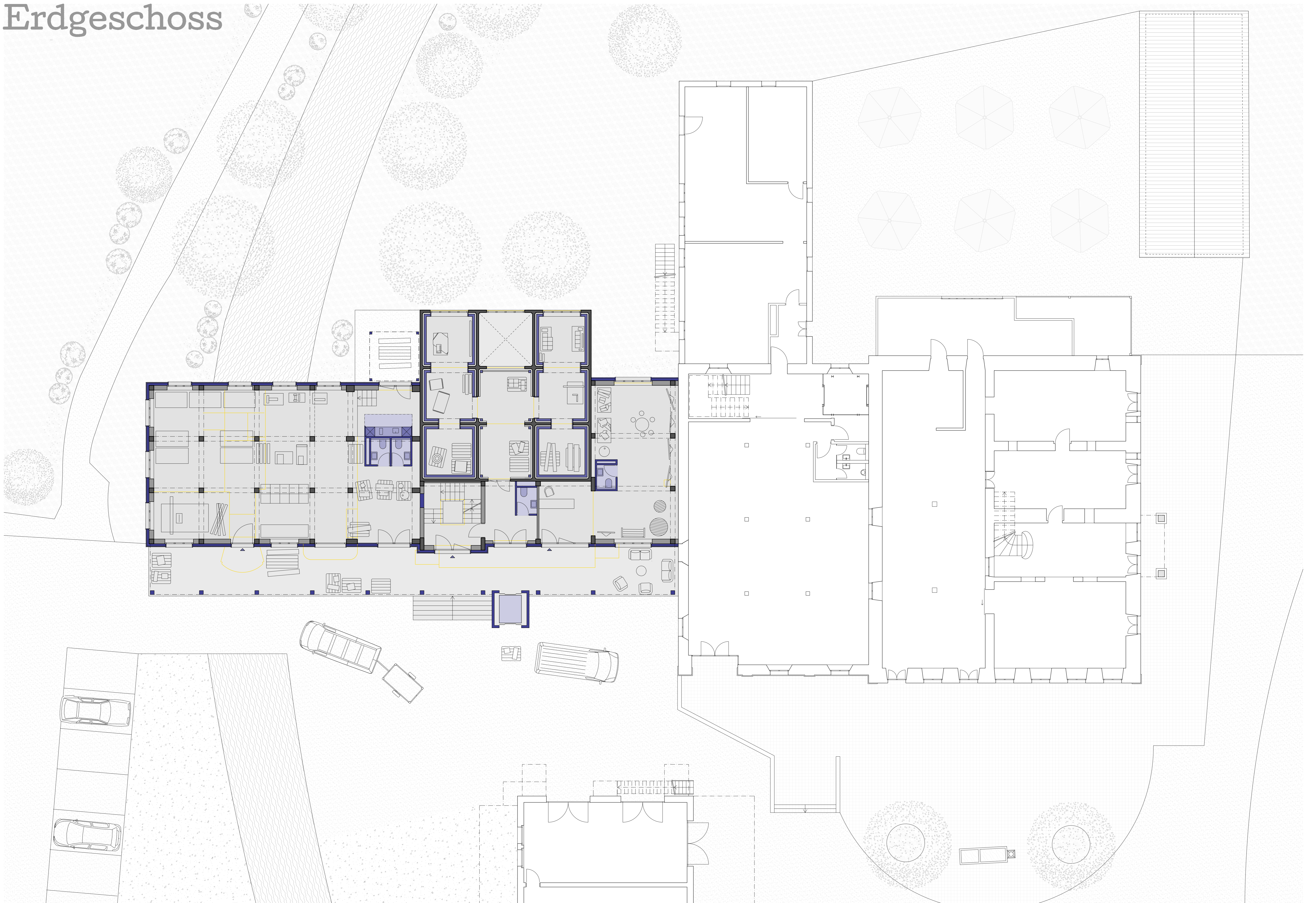




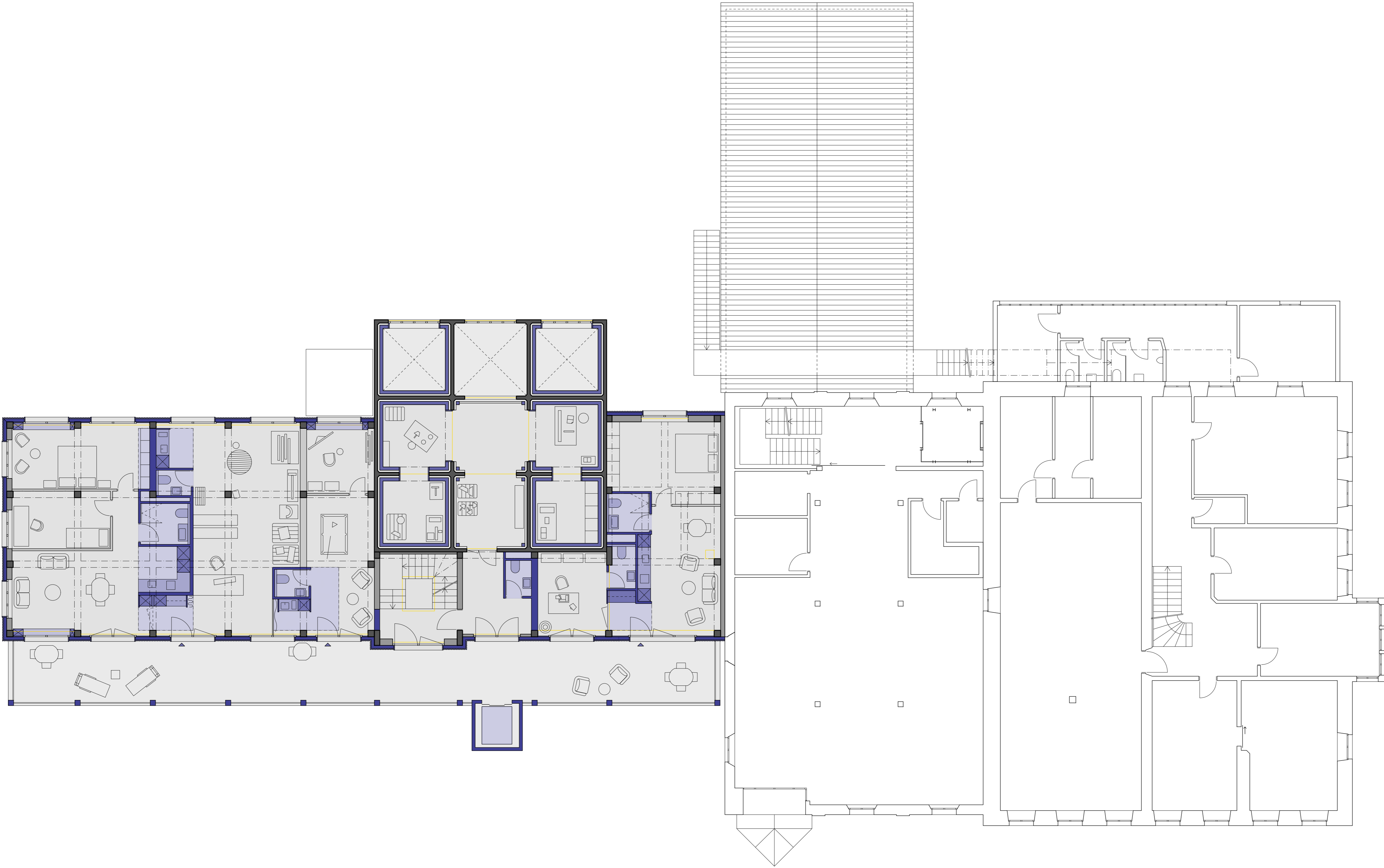
Situation



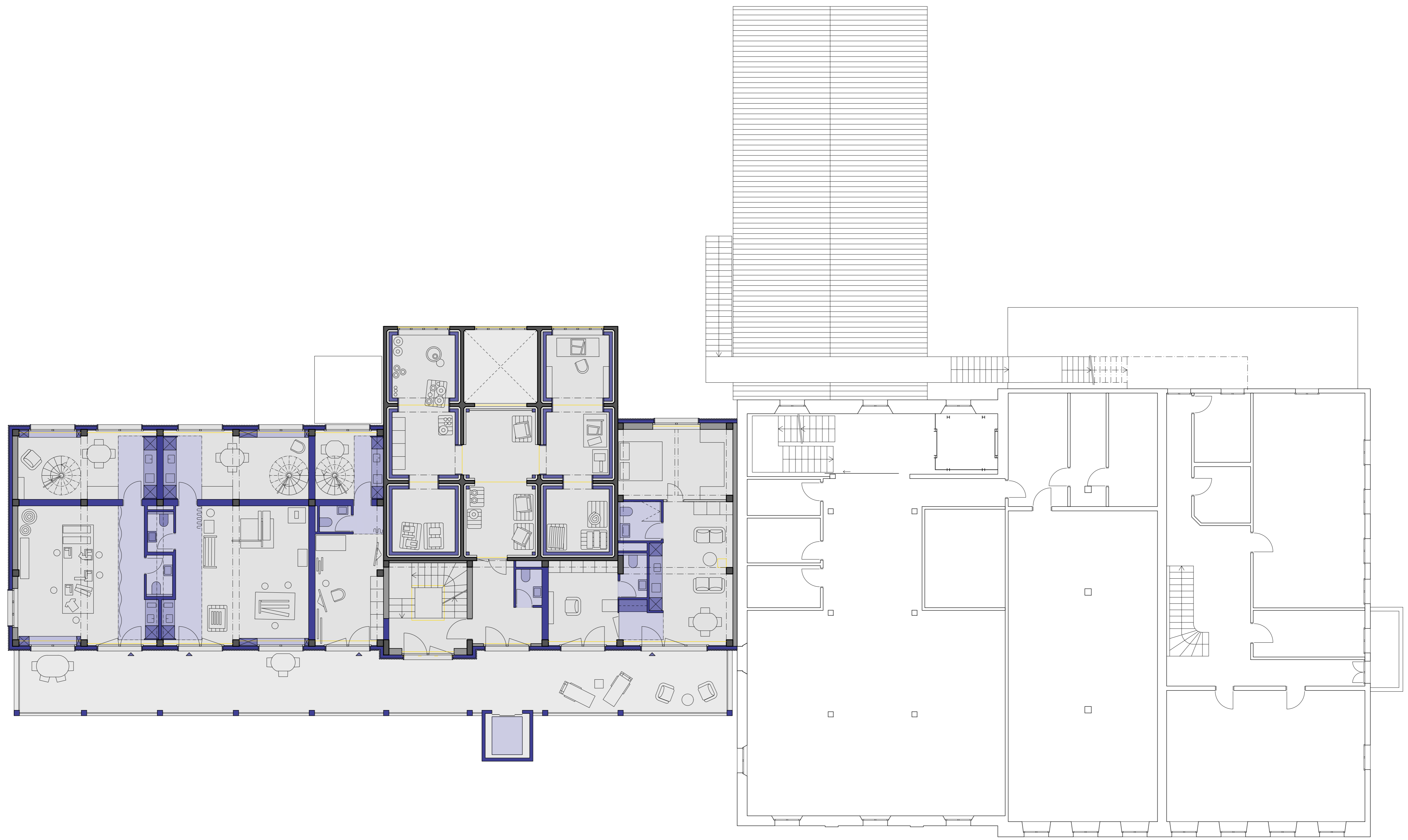
Erdgeschoss



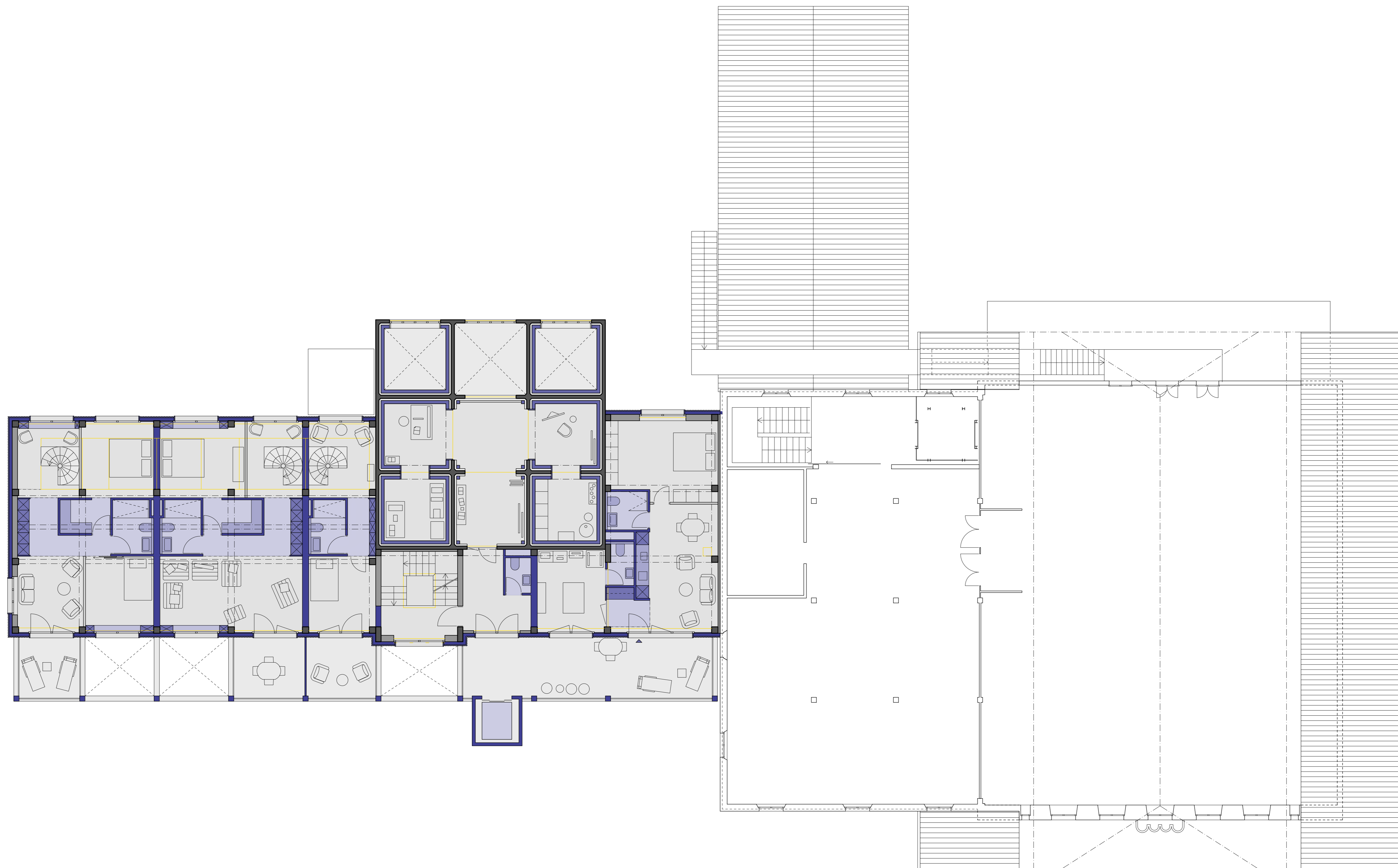
1. Obergeschoss



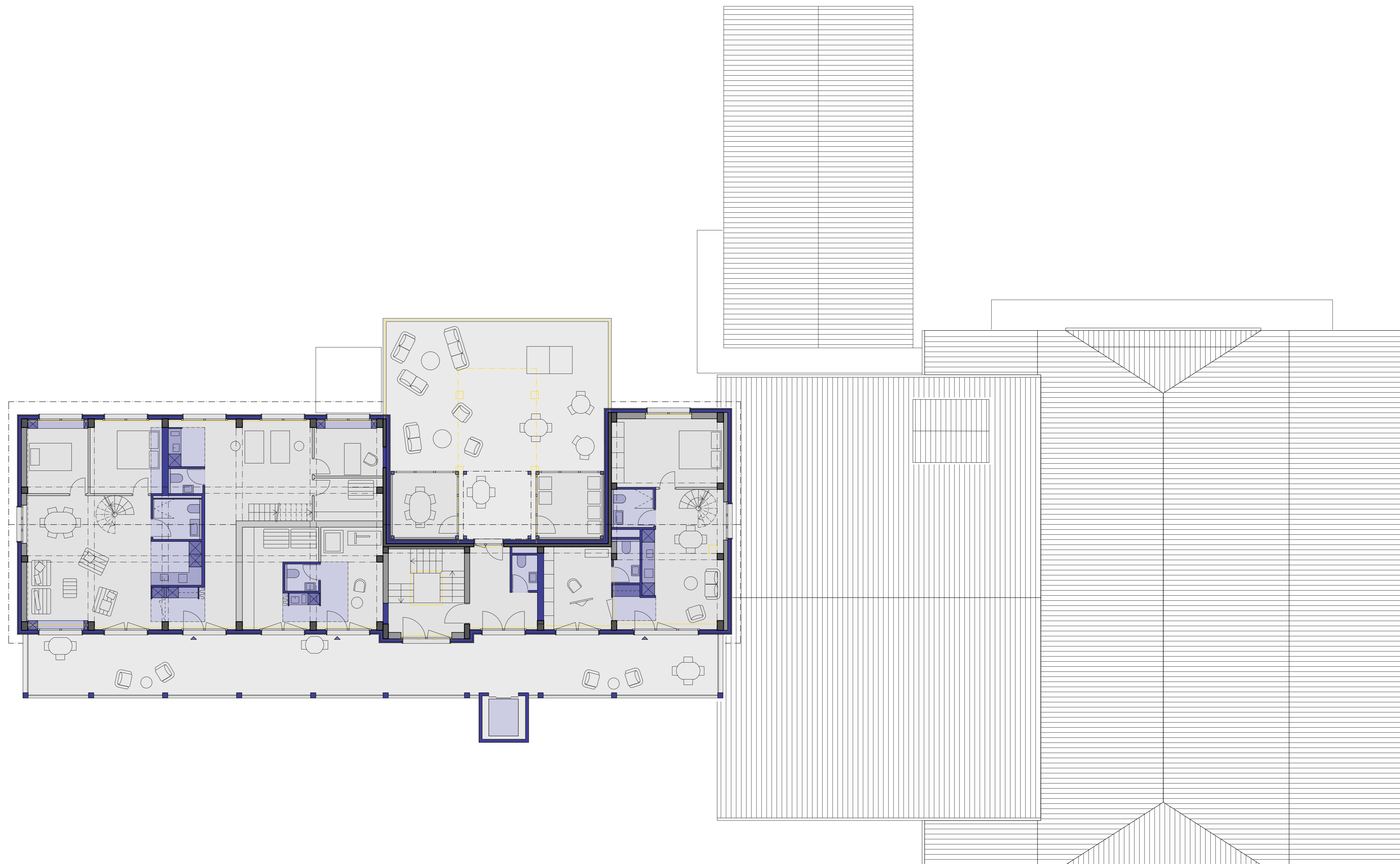
2. Obergeschoss



3. Obergeschoss



Dachgeschoss



Schnitte

