

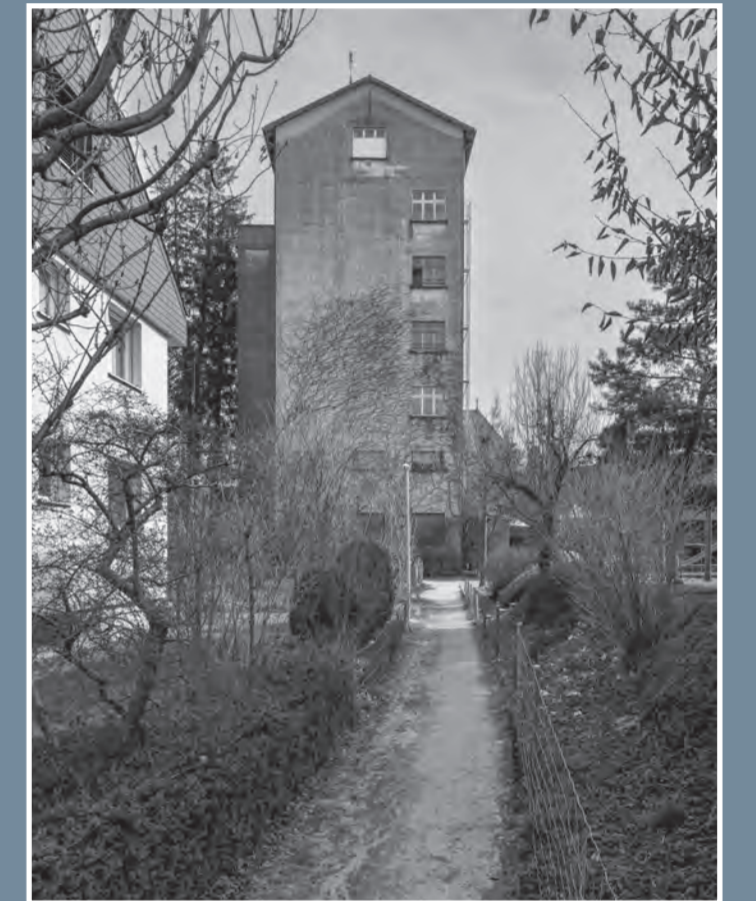
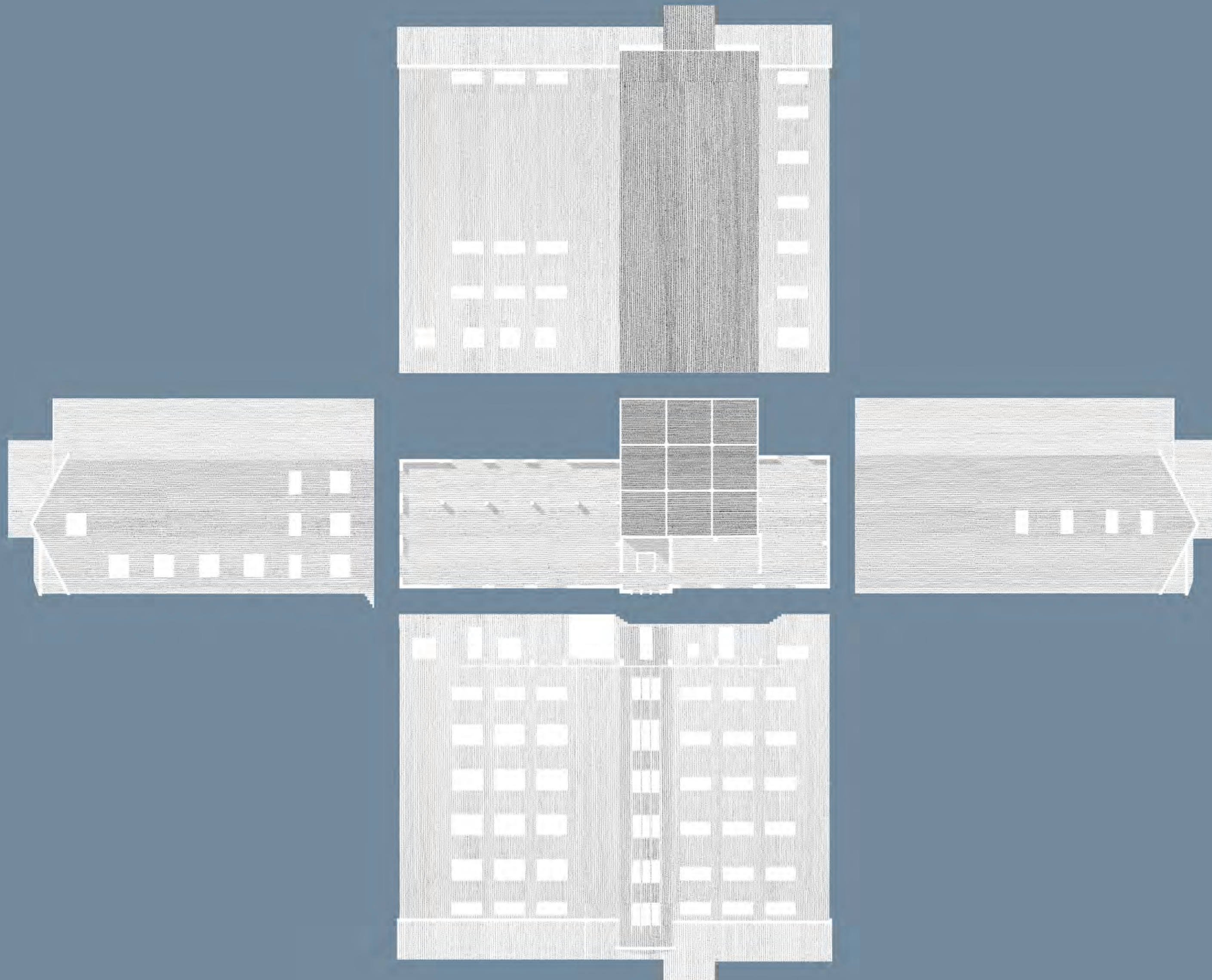


ALTE MÜHLE LANGENTHAL

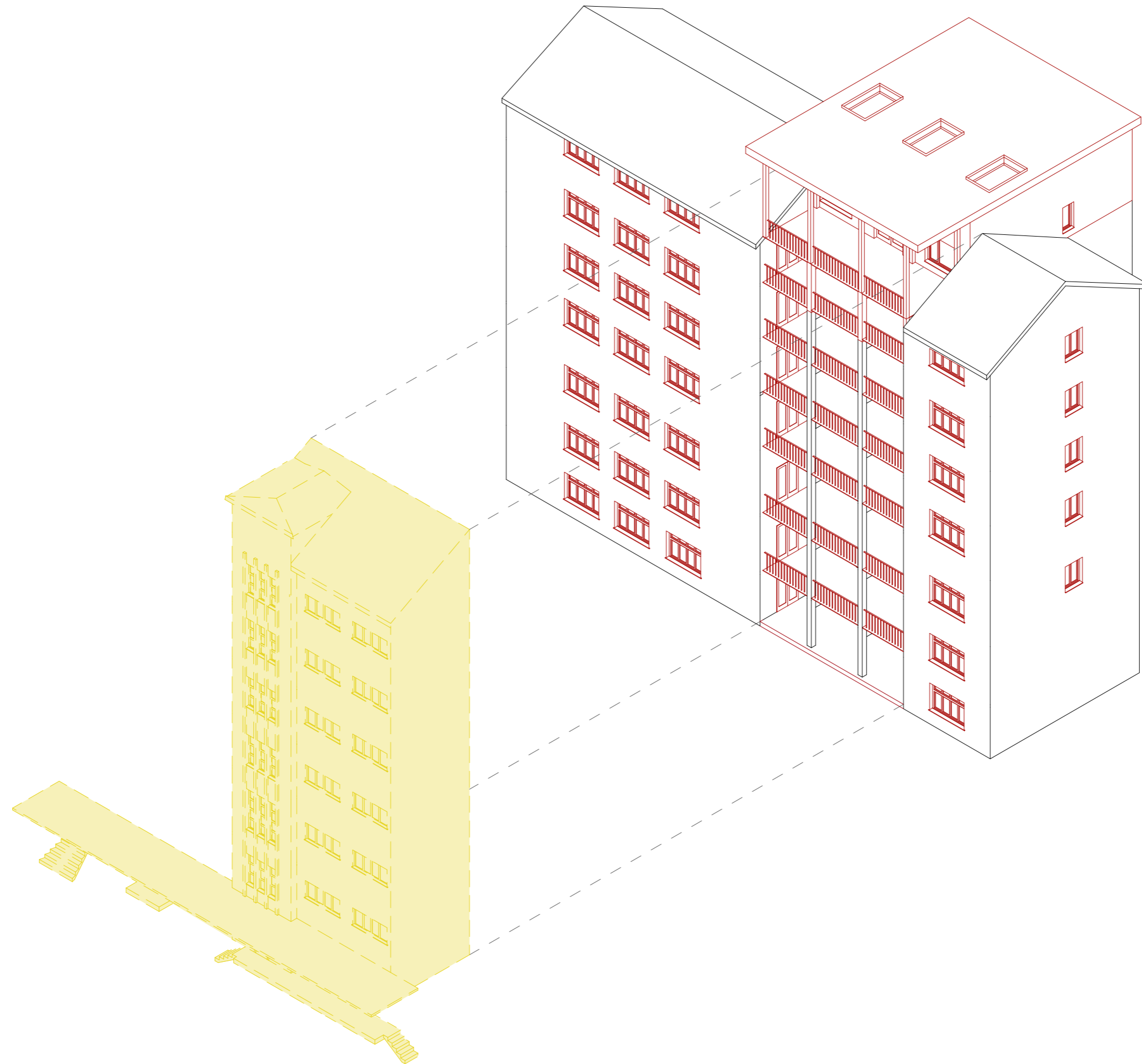
# UMNUTZUNG EHEMALIGES SILOGEBÄUDE

Dozent: Prof. Wolfgang Rossbauer  
Diplomexperte: Prof. Tim Seidel  
Studentin: Carolin Kutzner





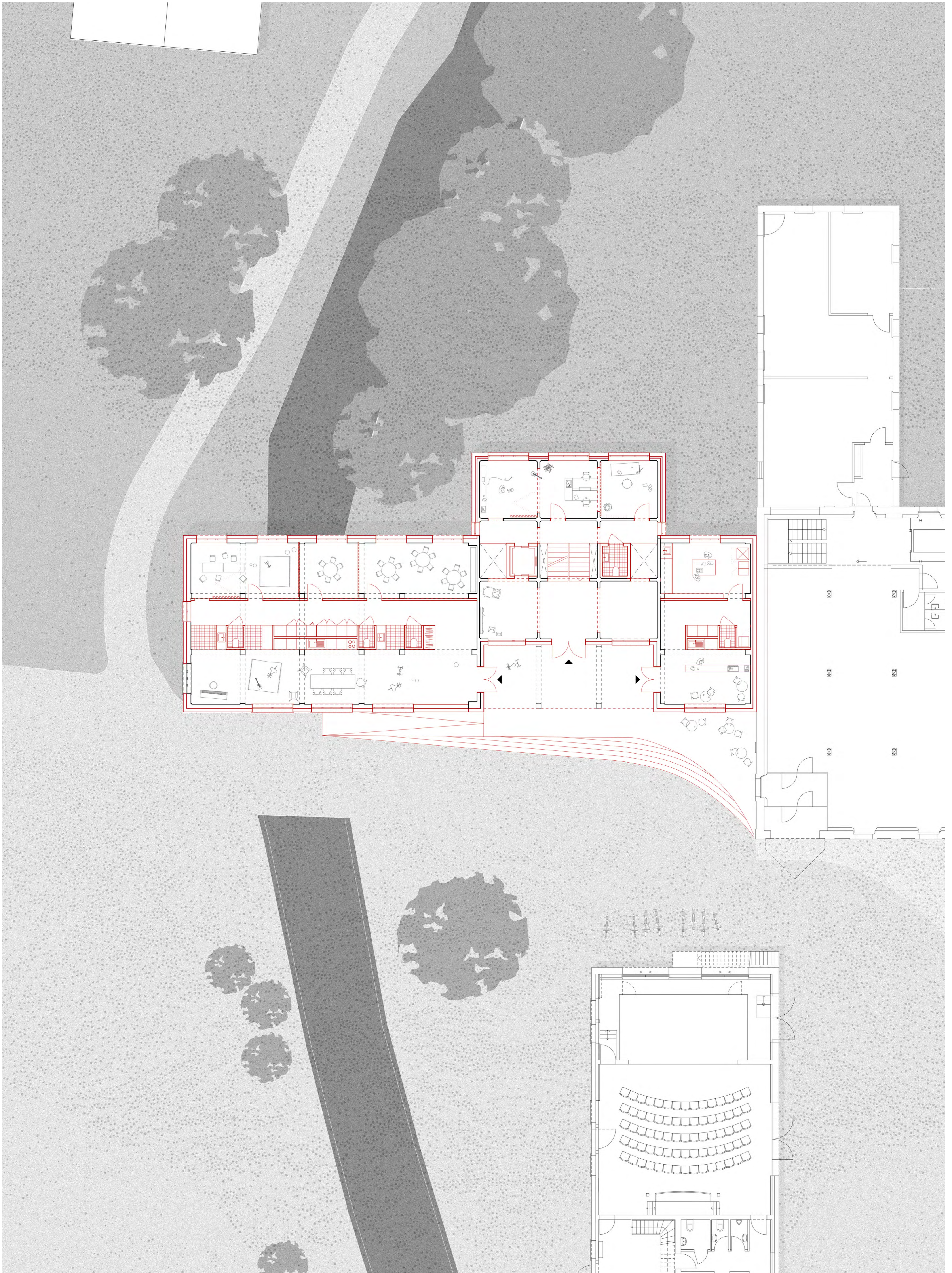






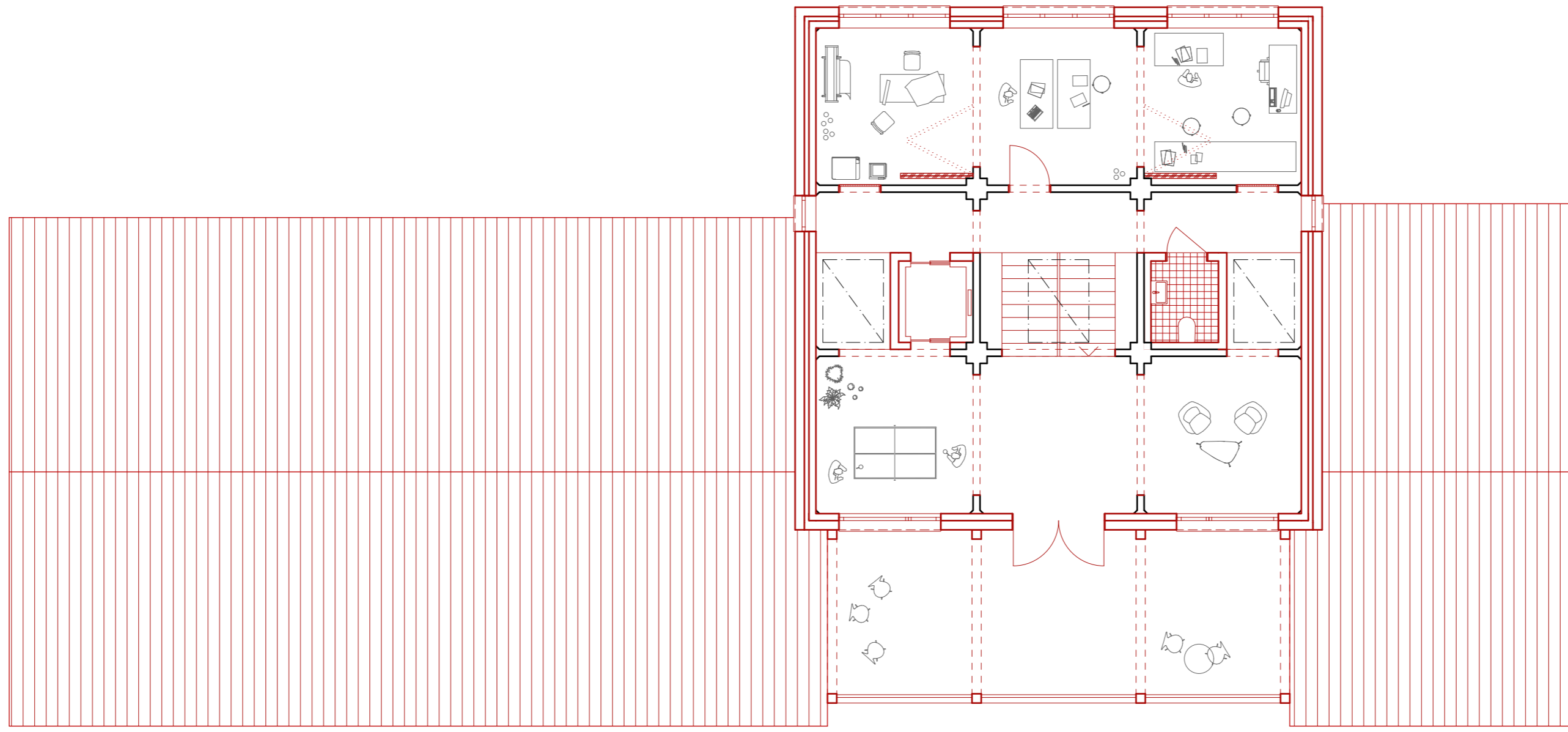




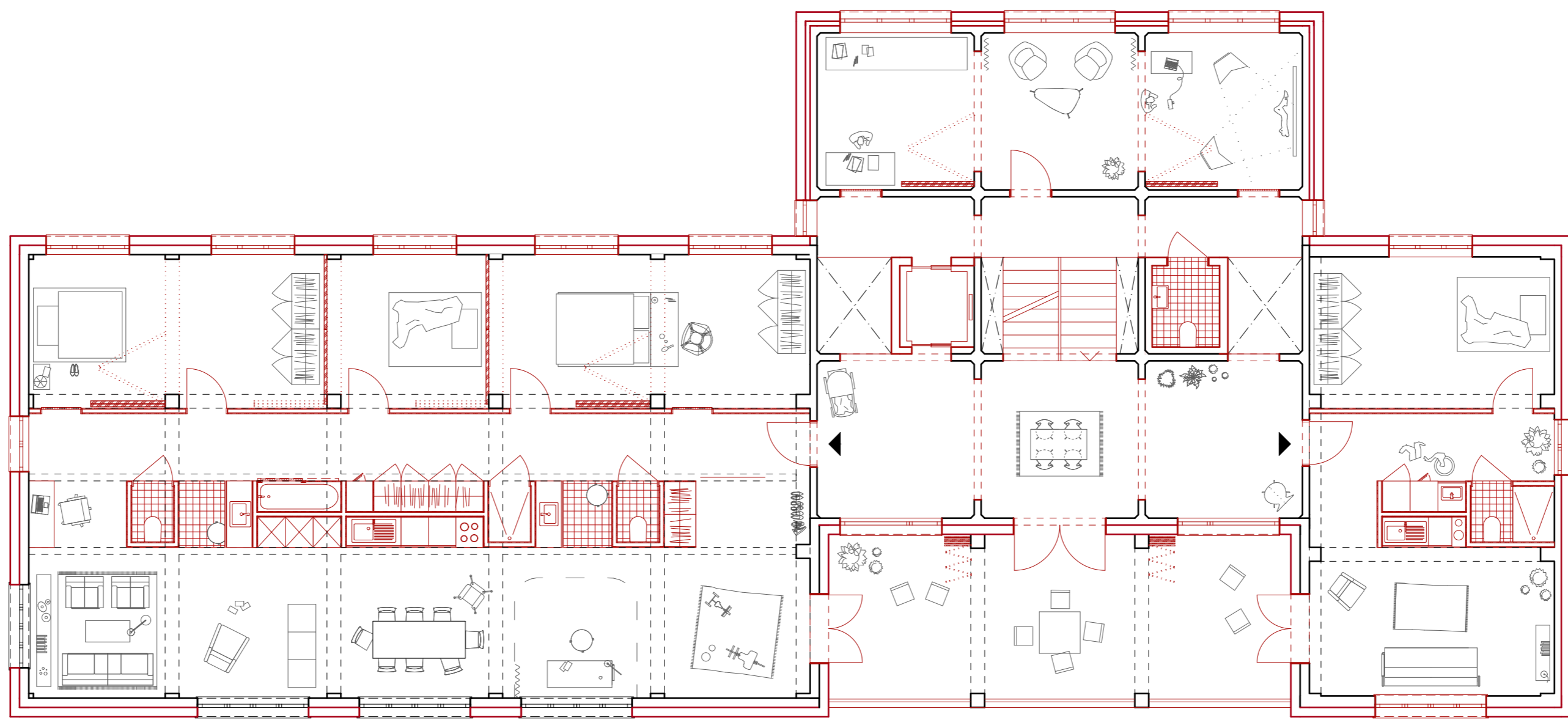




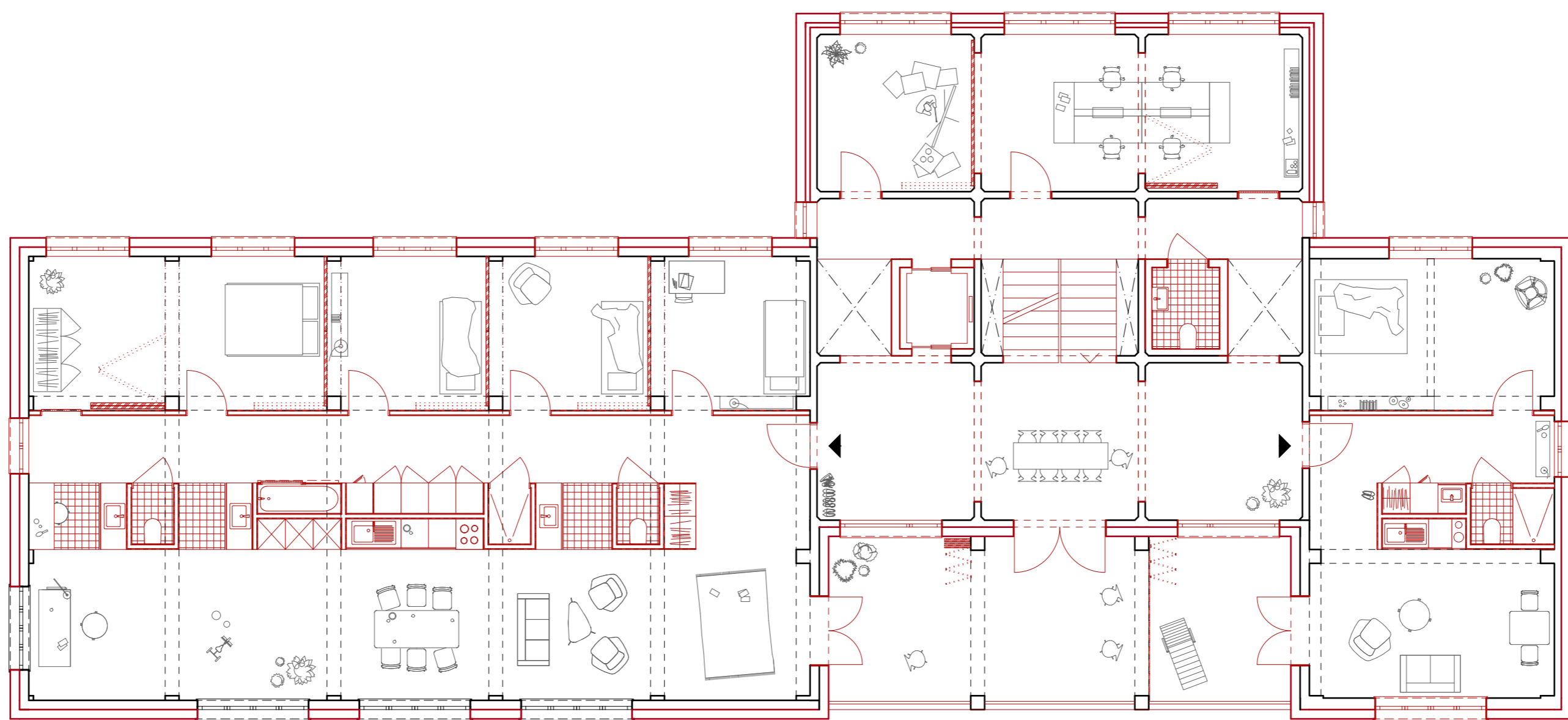
DACHGESCHOSS



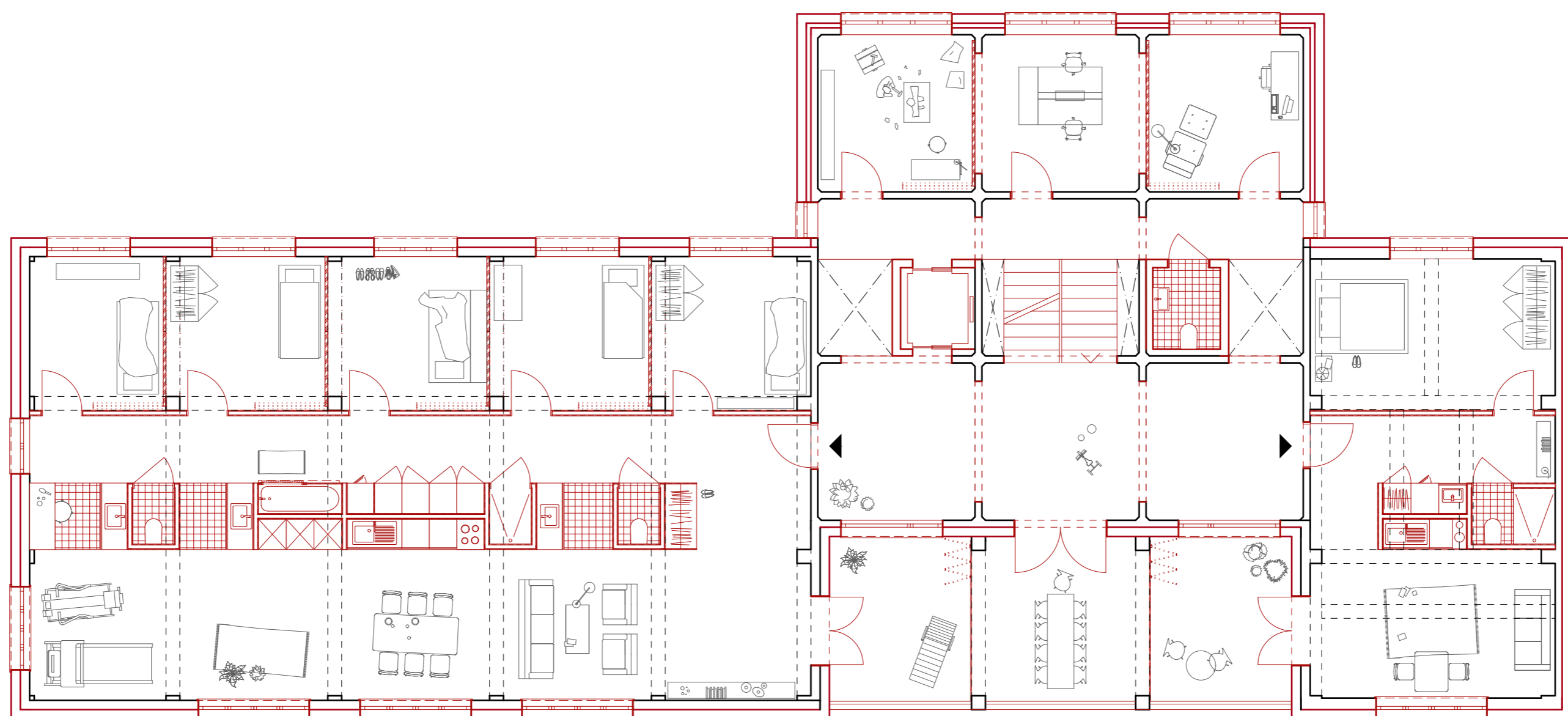
3. OBERGESCHOSS



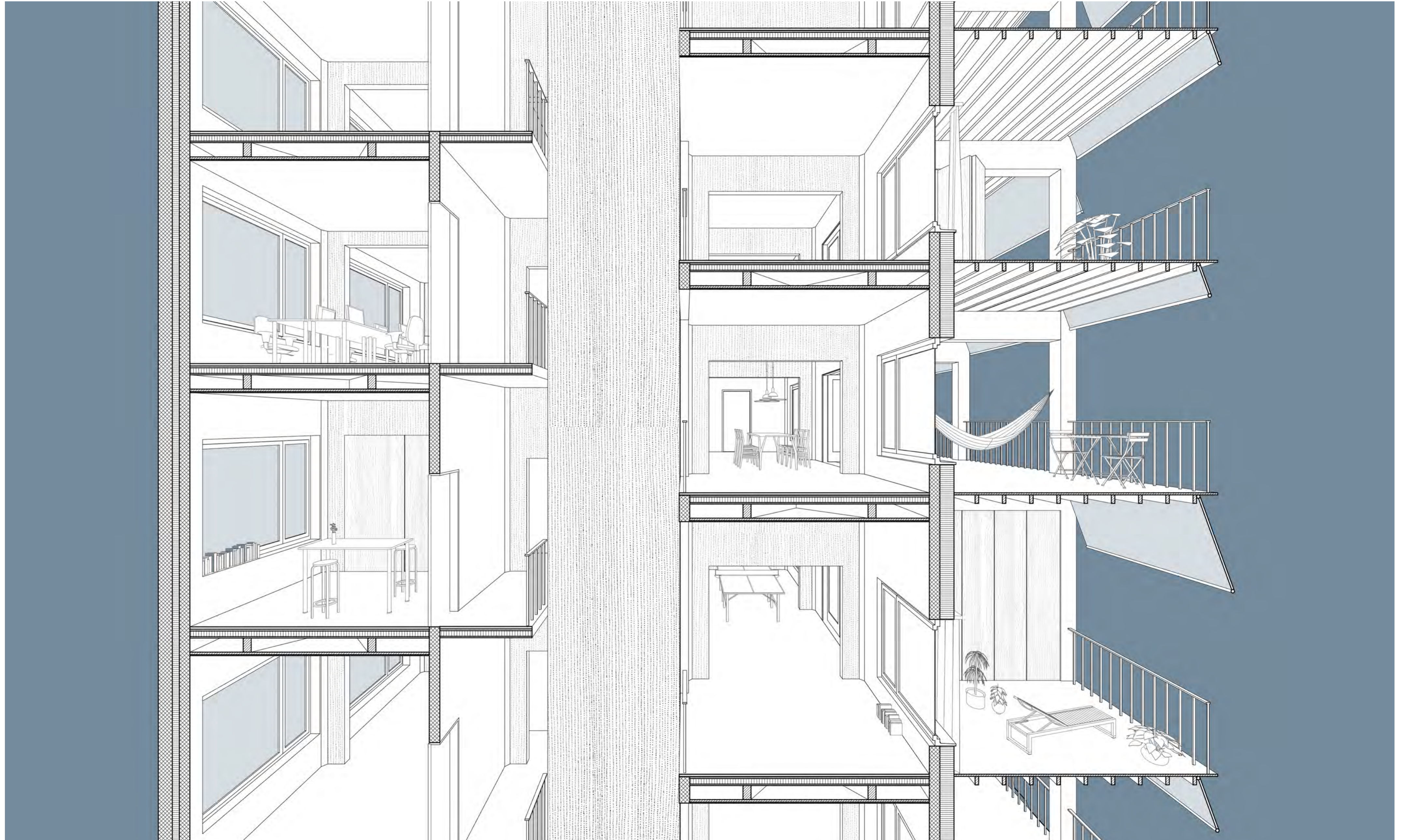
2. OBERGESCHOSS



1. OBERGESCHOSS











SÜDFASSADE



NORDFASSADE

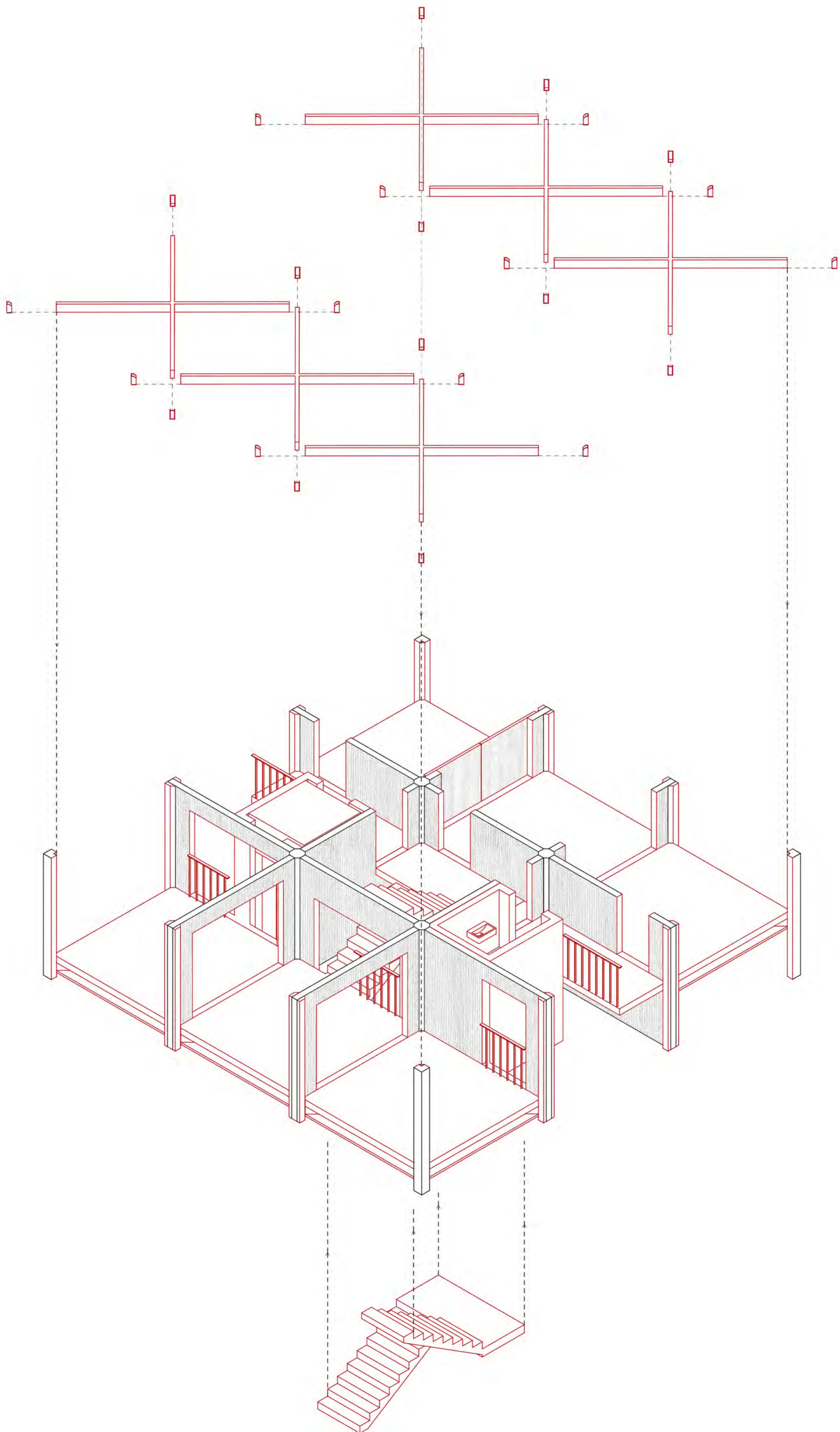
















INNENRAUM WOHNUNG





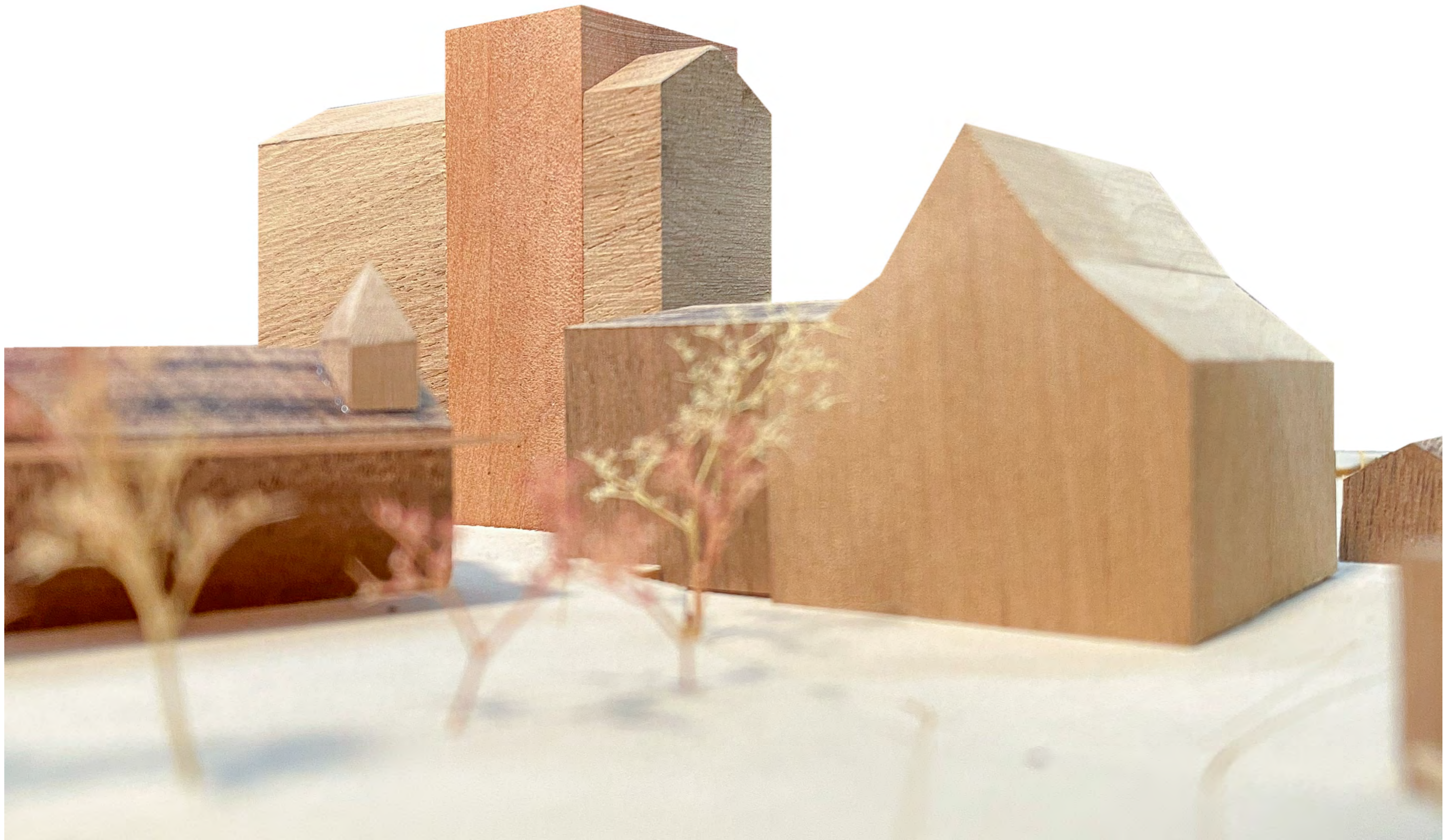
INNENRAUM ATELIER





GEBÄUDE IM KONTEXT





ANSICHT SÜD-OST

MODELL 1:500



