

# «Gemeinschaft in der Streusiedlung, am Beispiel Schoried»

Schlussabgabe



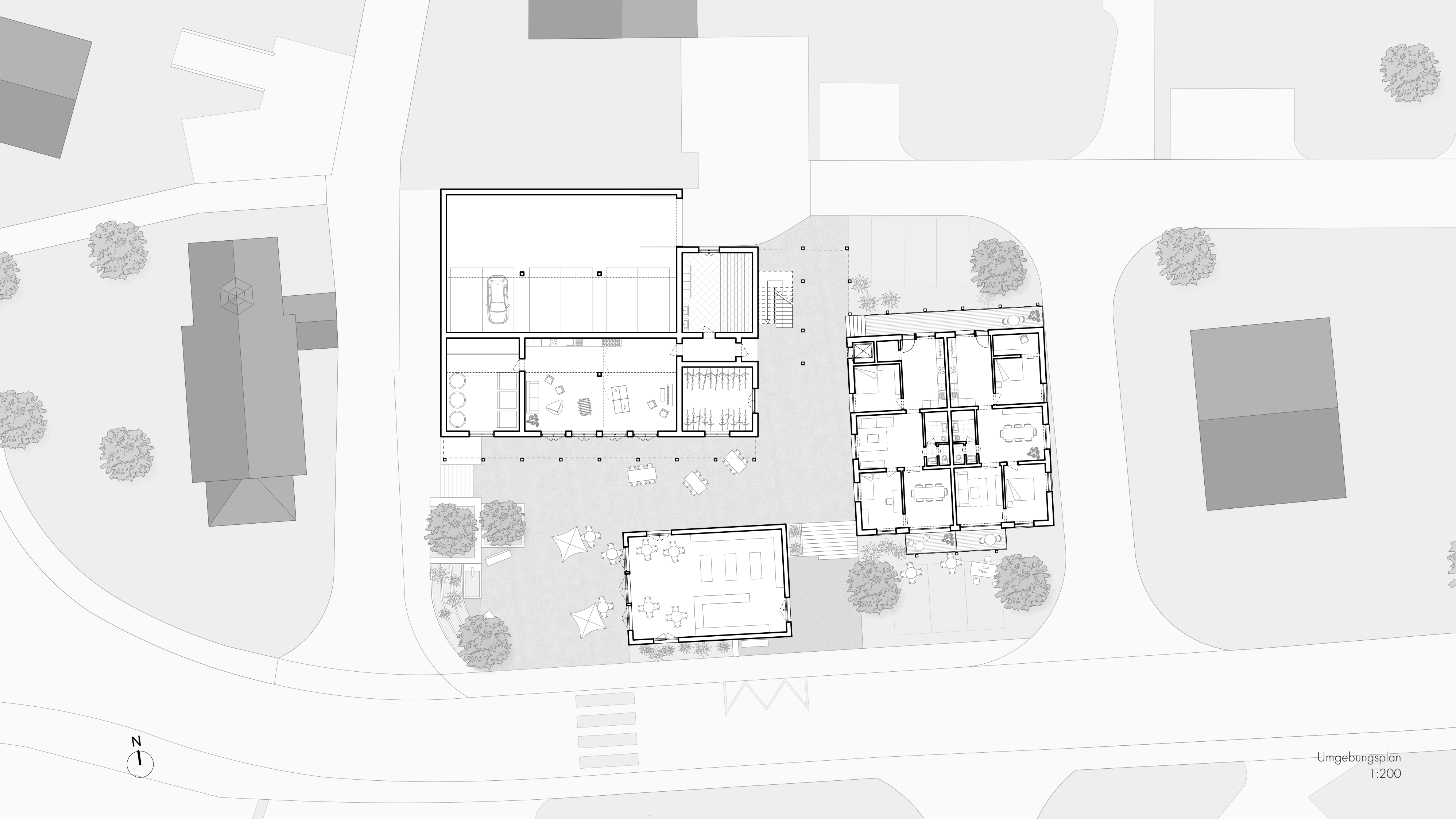


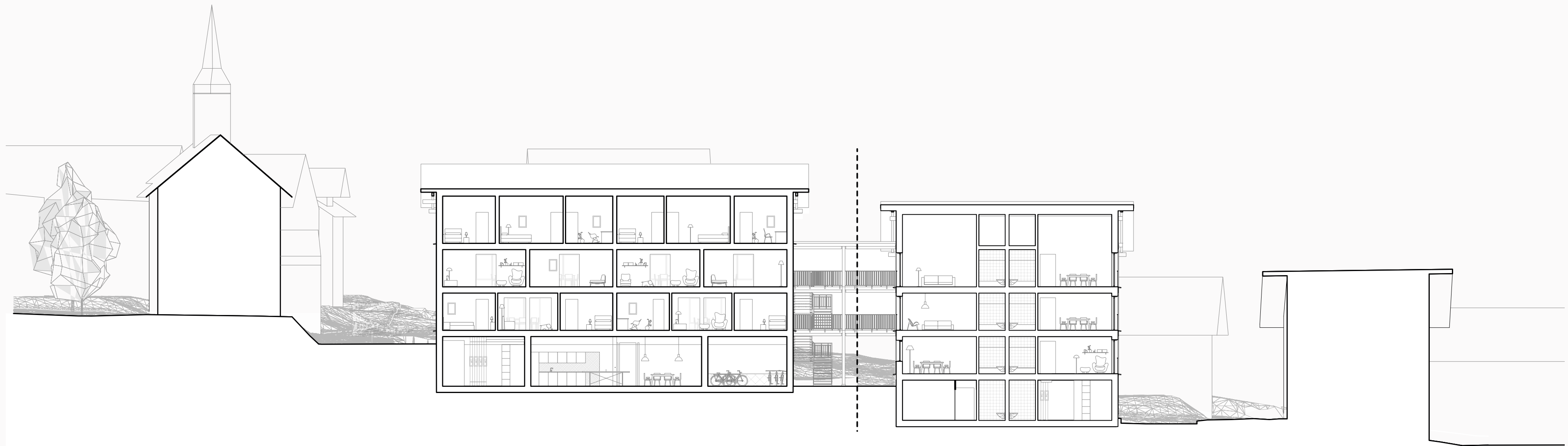




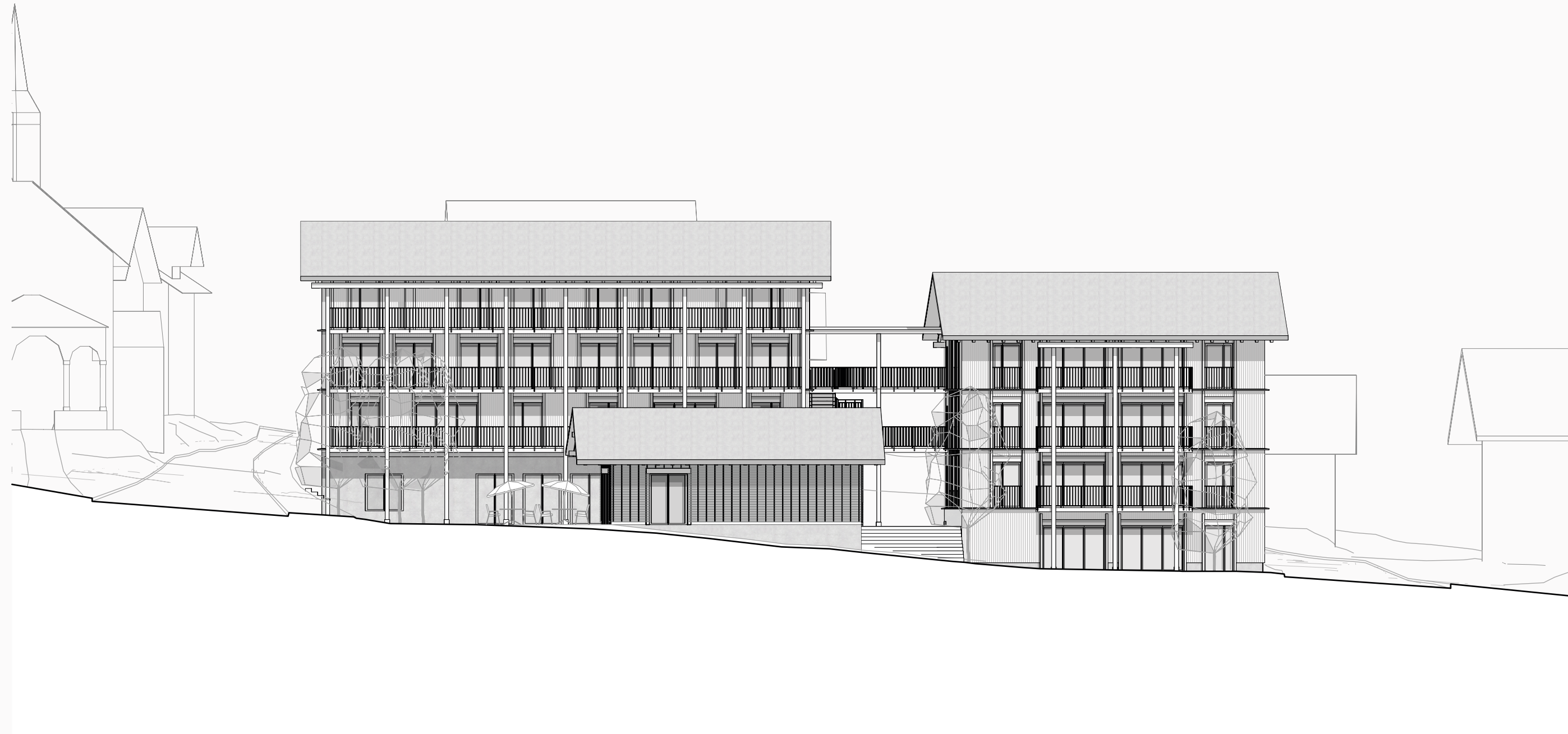










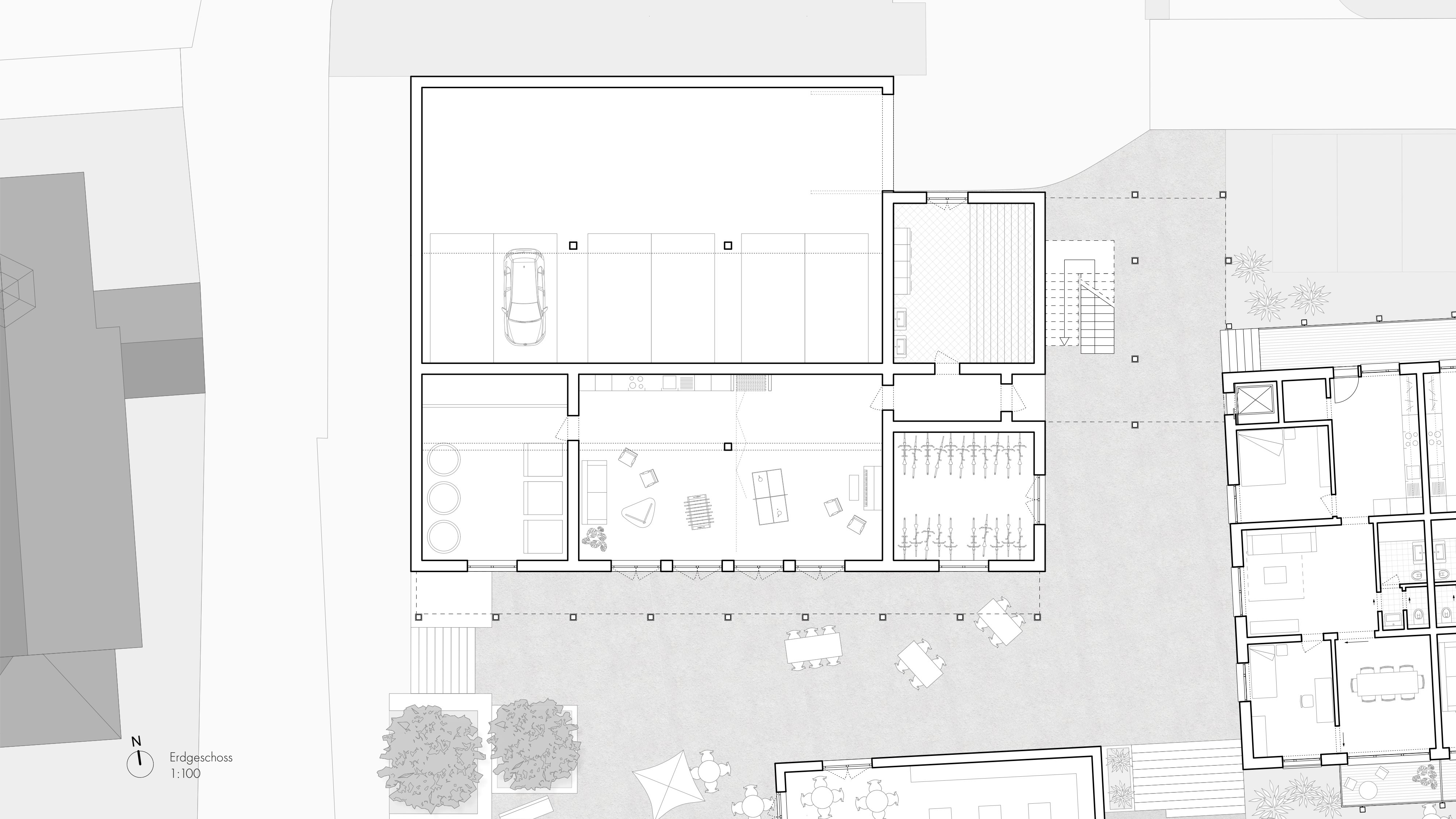


Ansicht Süd  
1:200

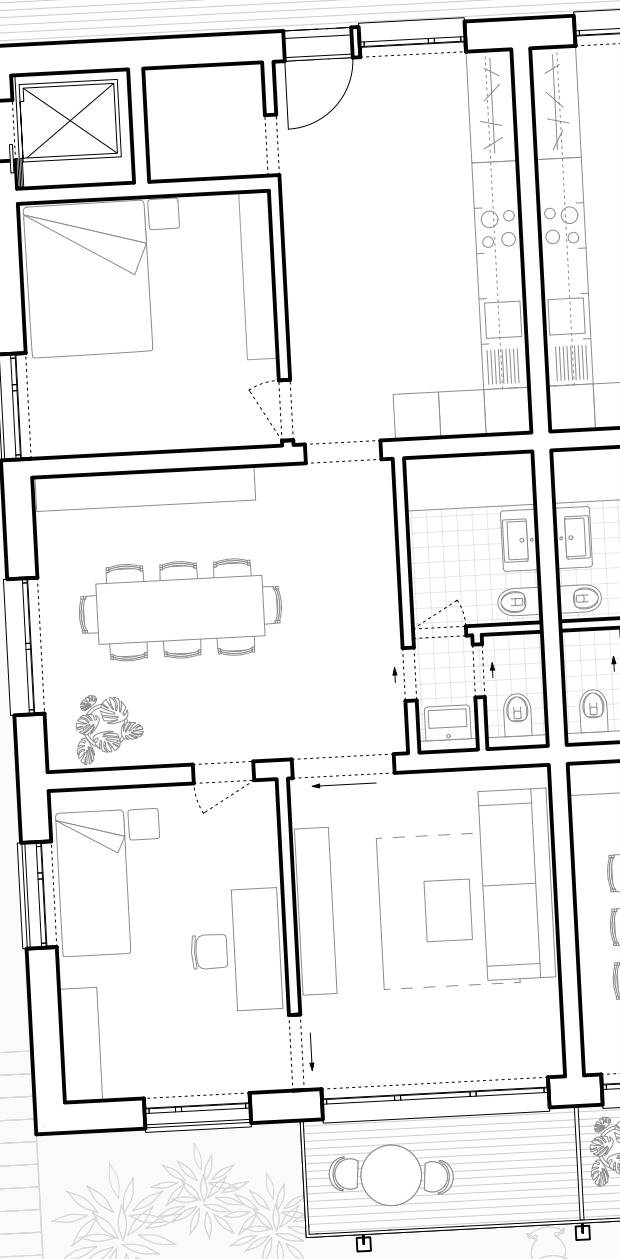
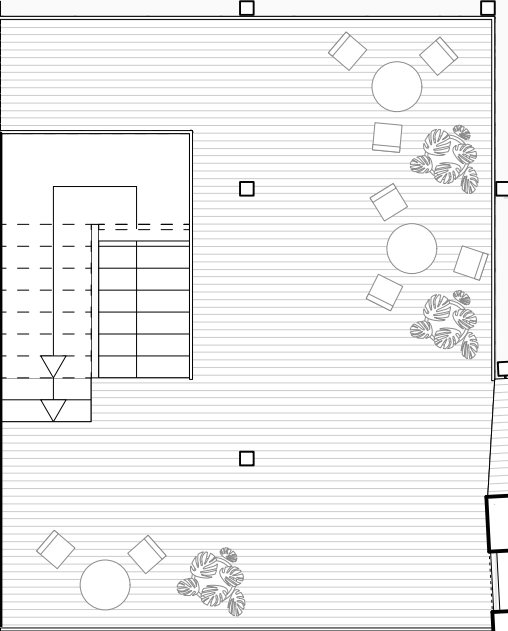
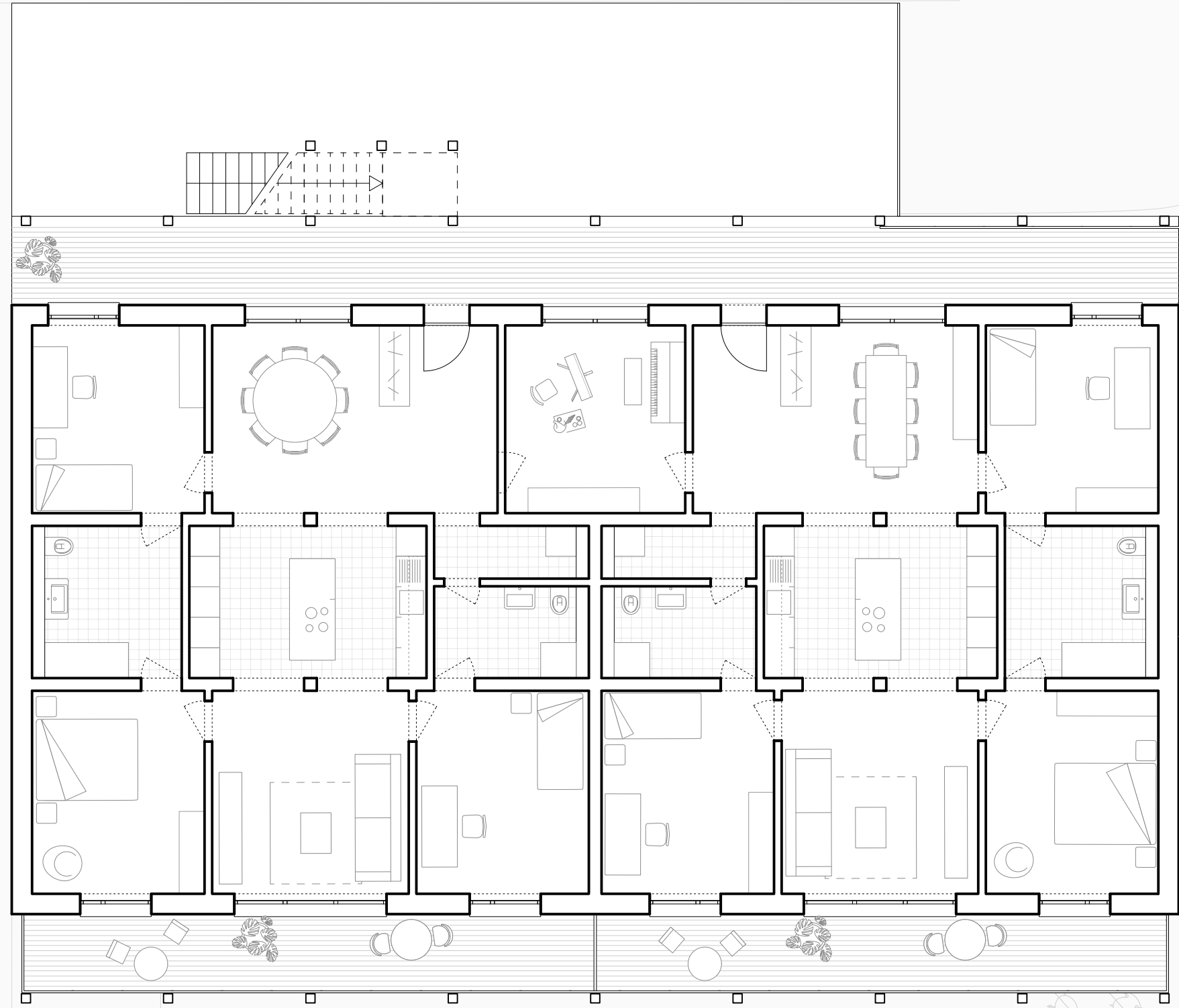






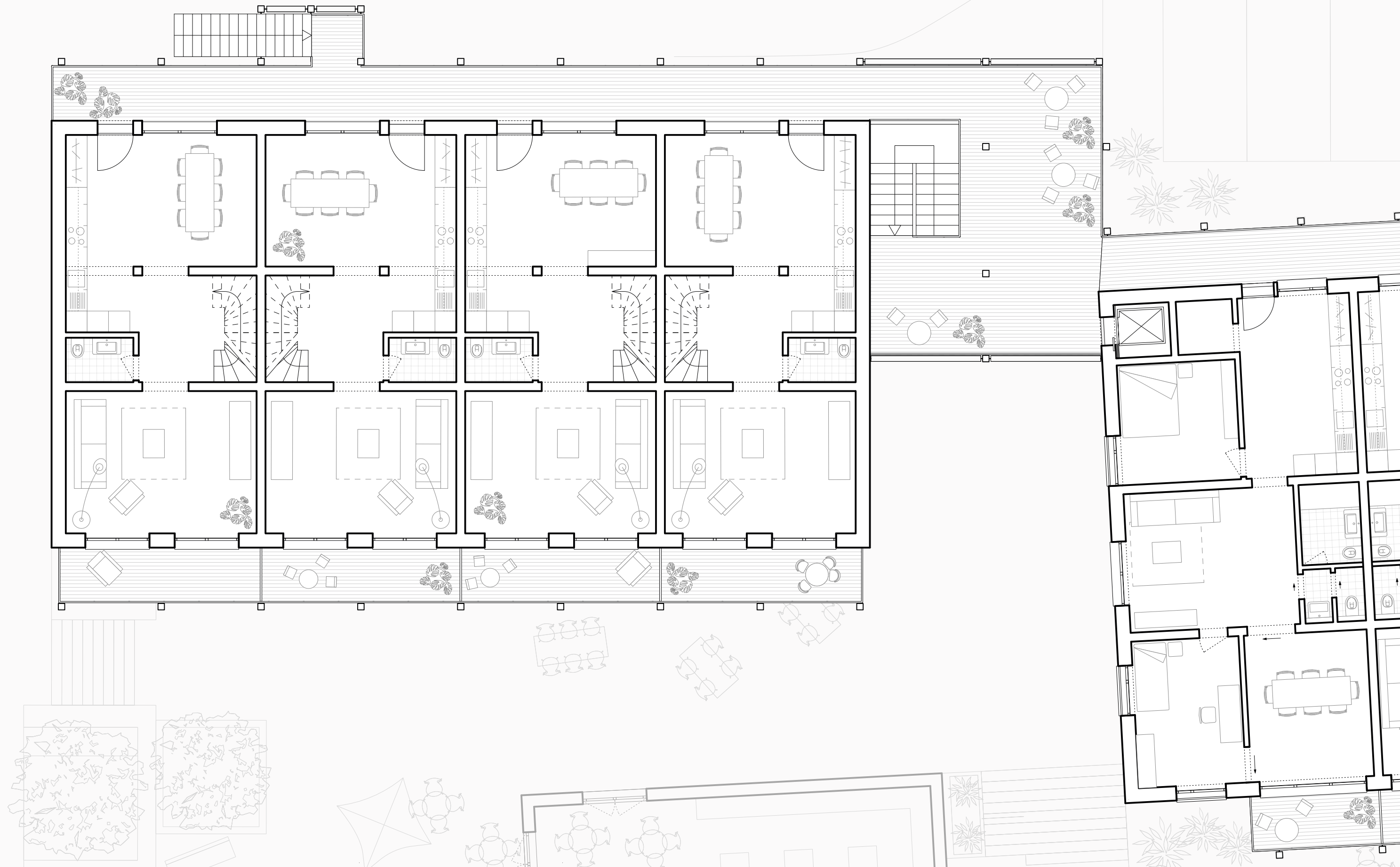


Erdgeschoss  
1:100



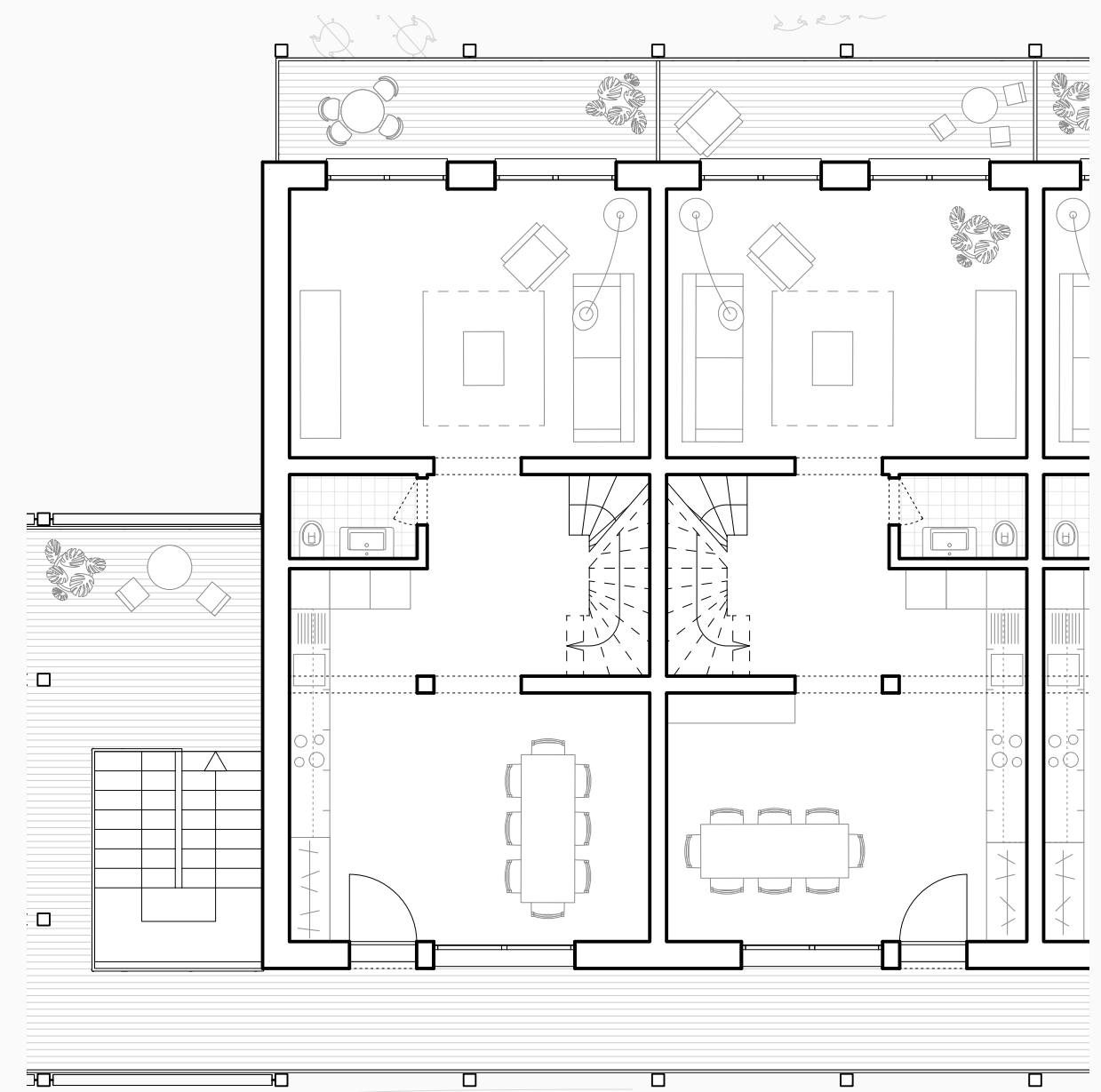
1. Obergeschoss  
1:100



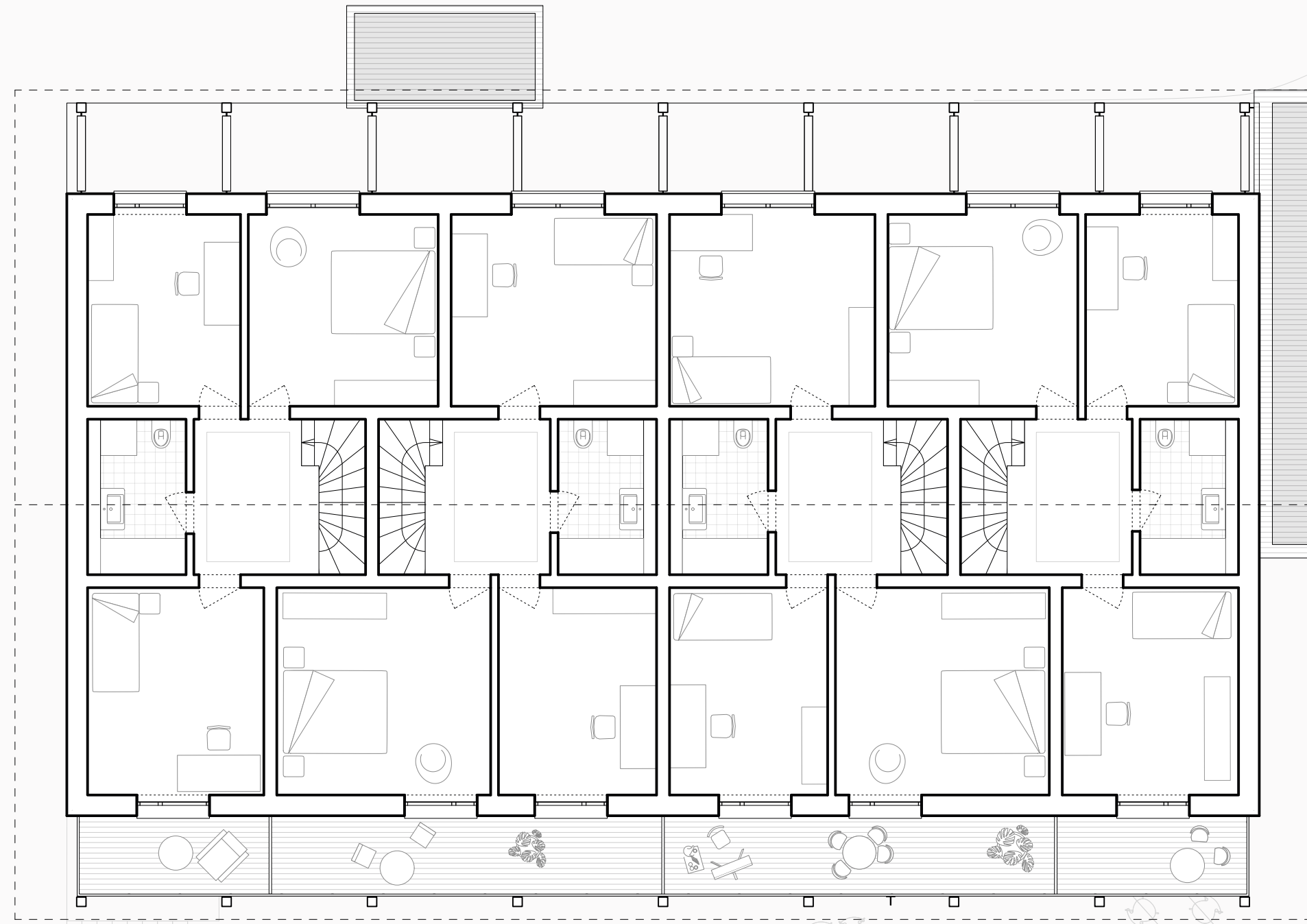


2. Obergeschoss  
1:100

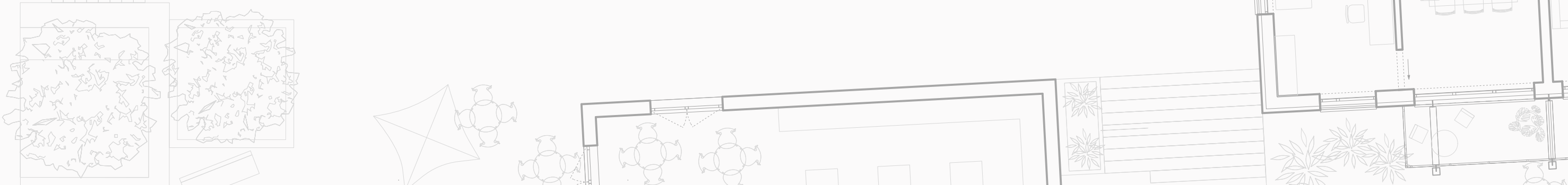


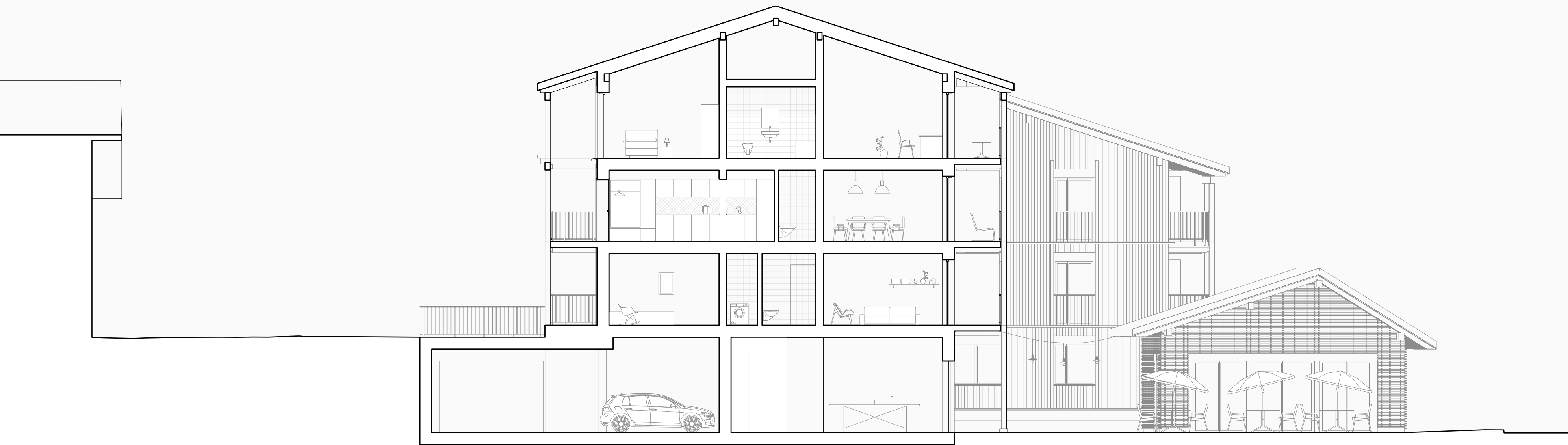




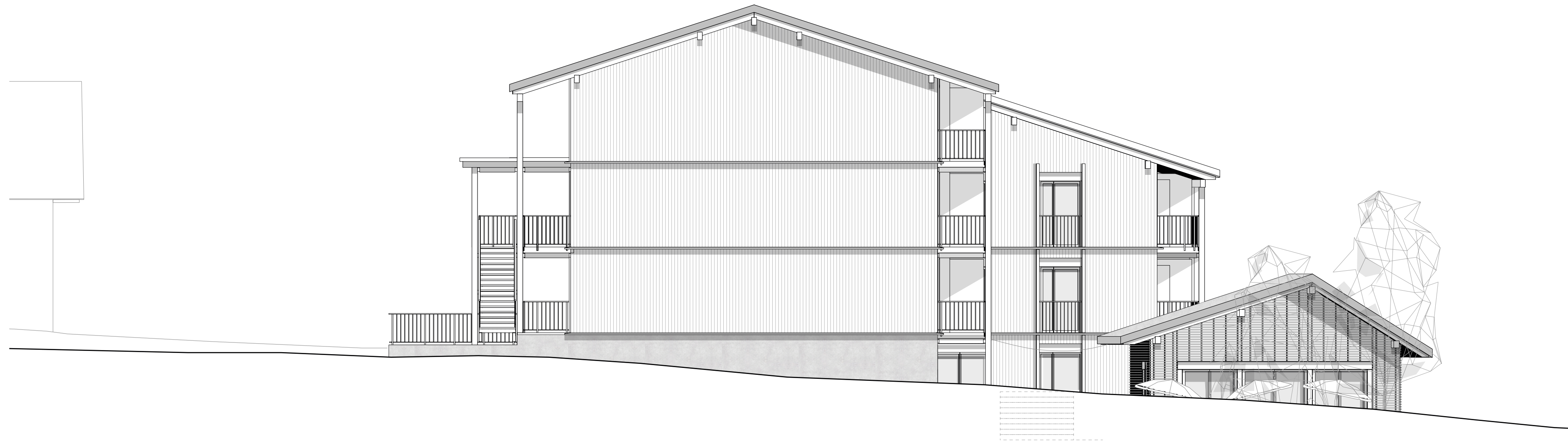


3. Obergeschoss  
1:100







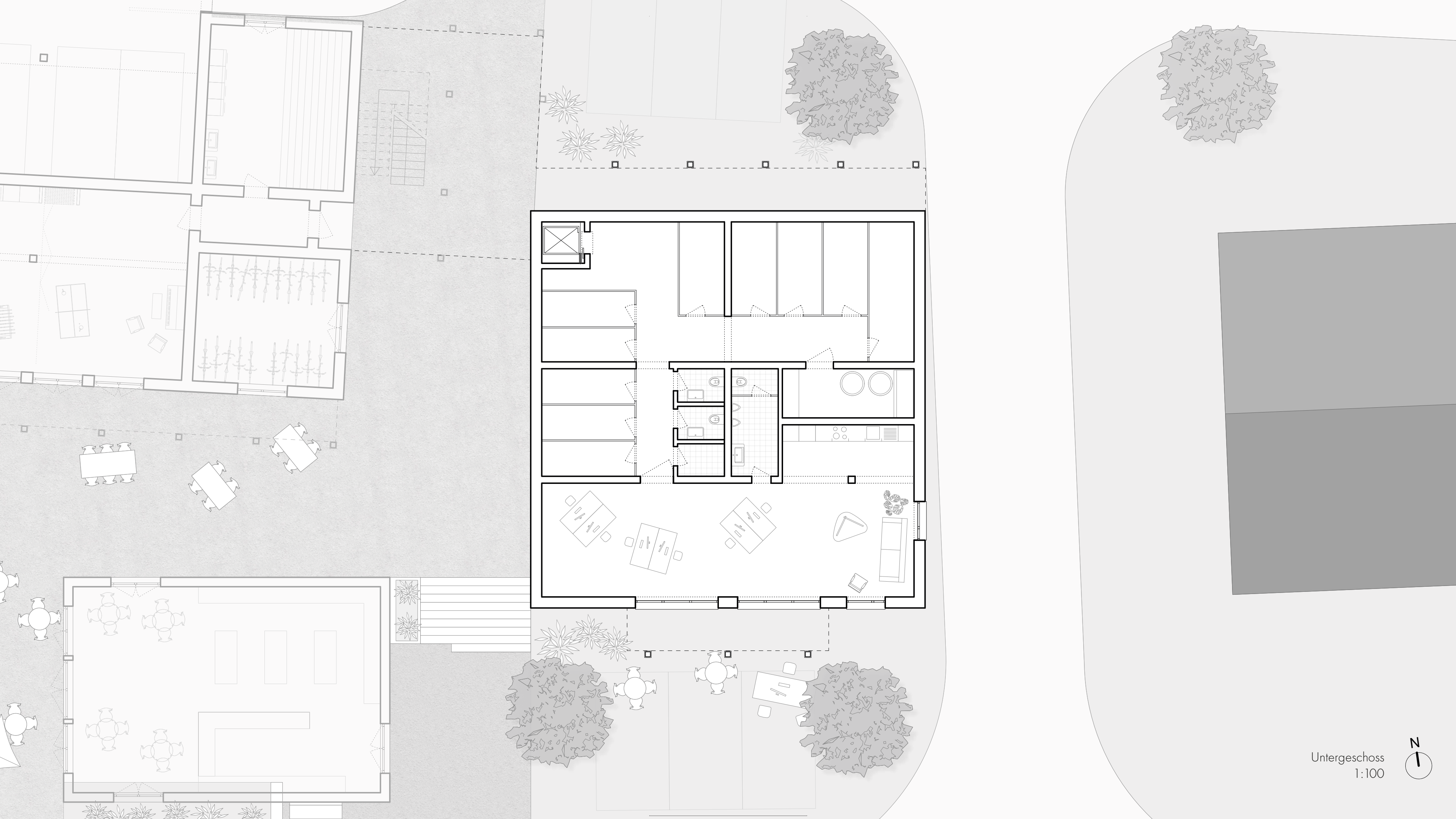


Ansicht Ost 1:100

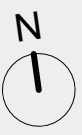




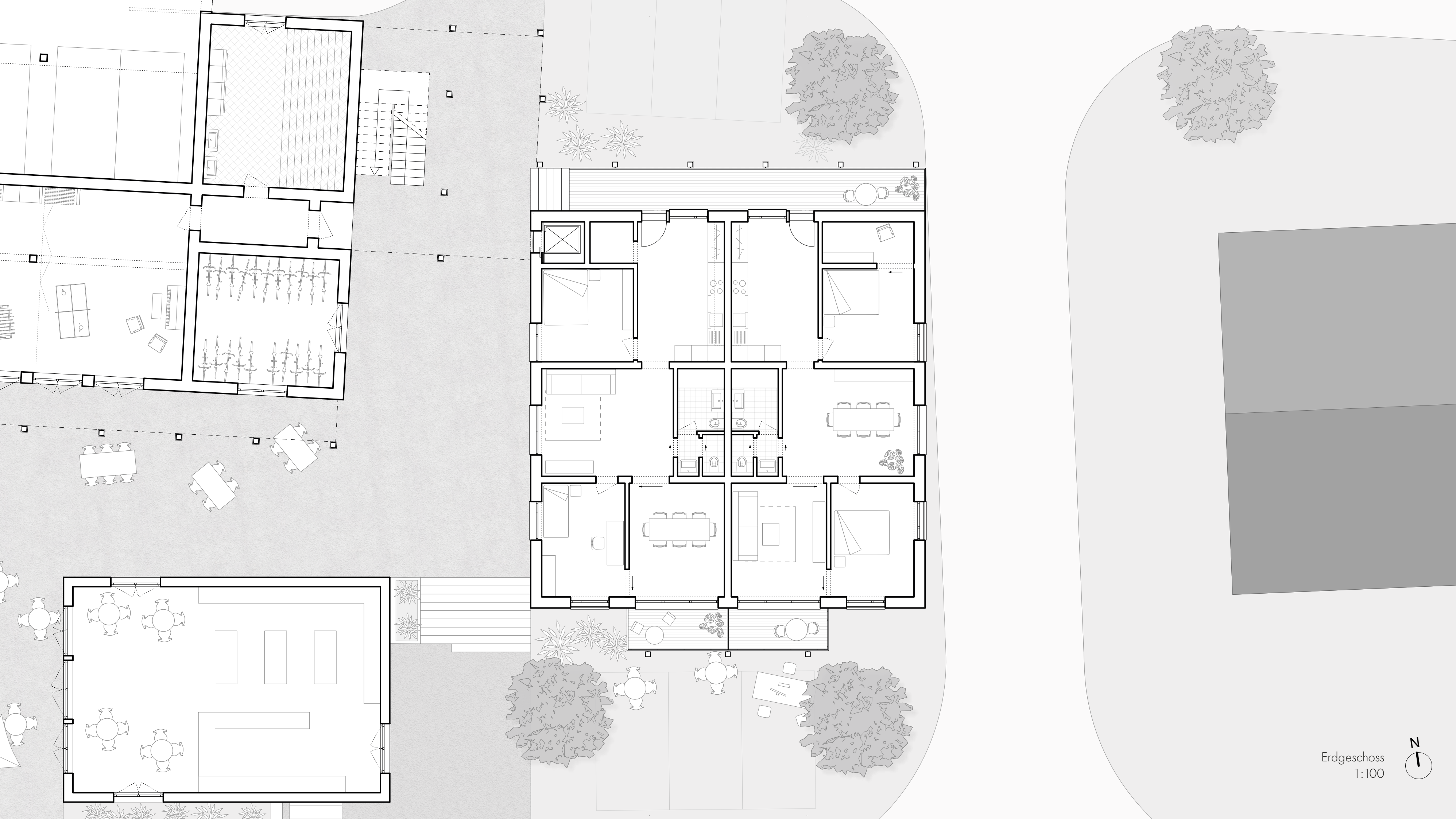




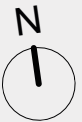
Untergeschoss  
1:100



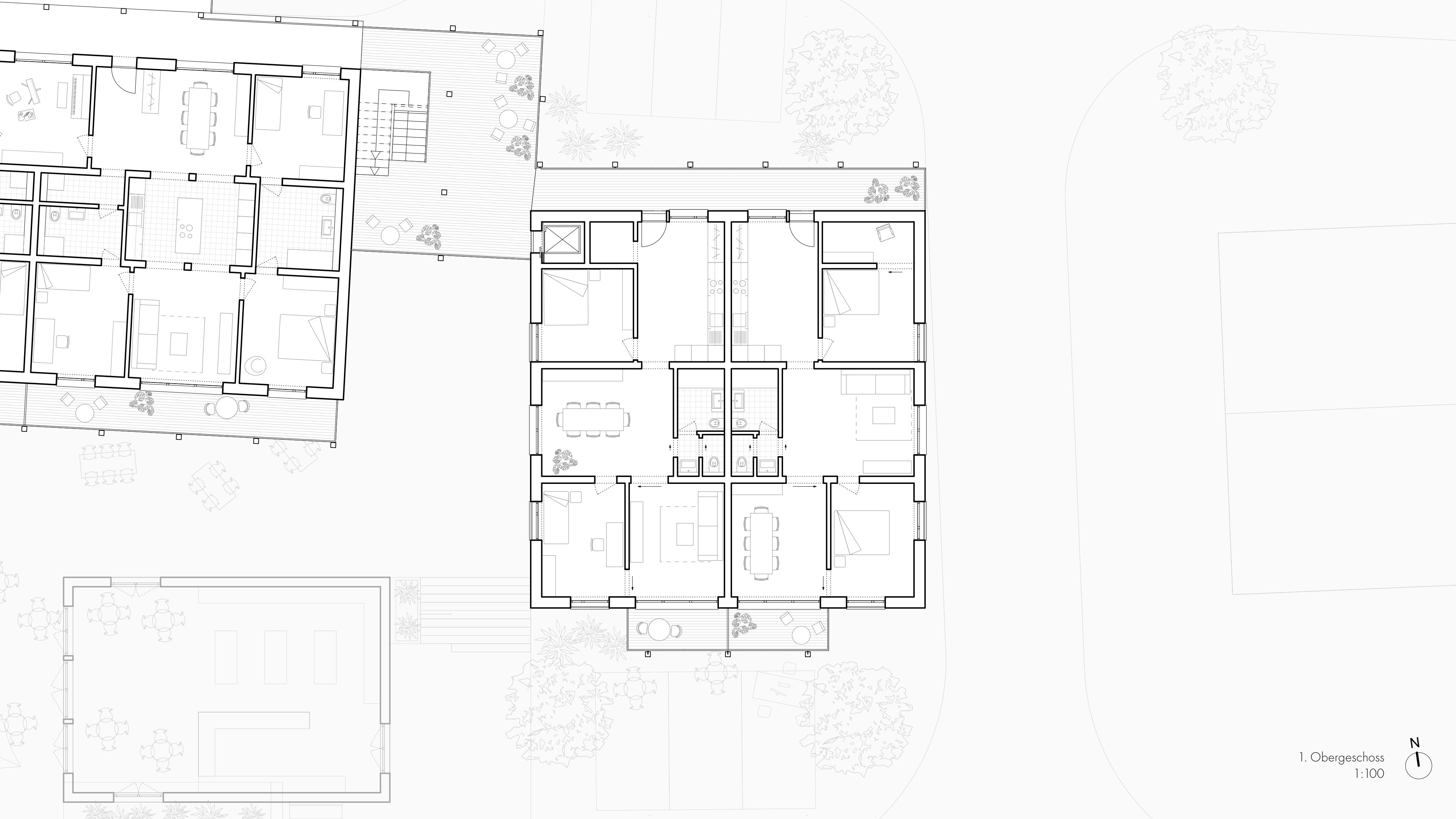




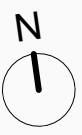
Erdgeschoss  
1:100



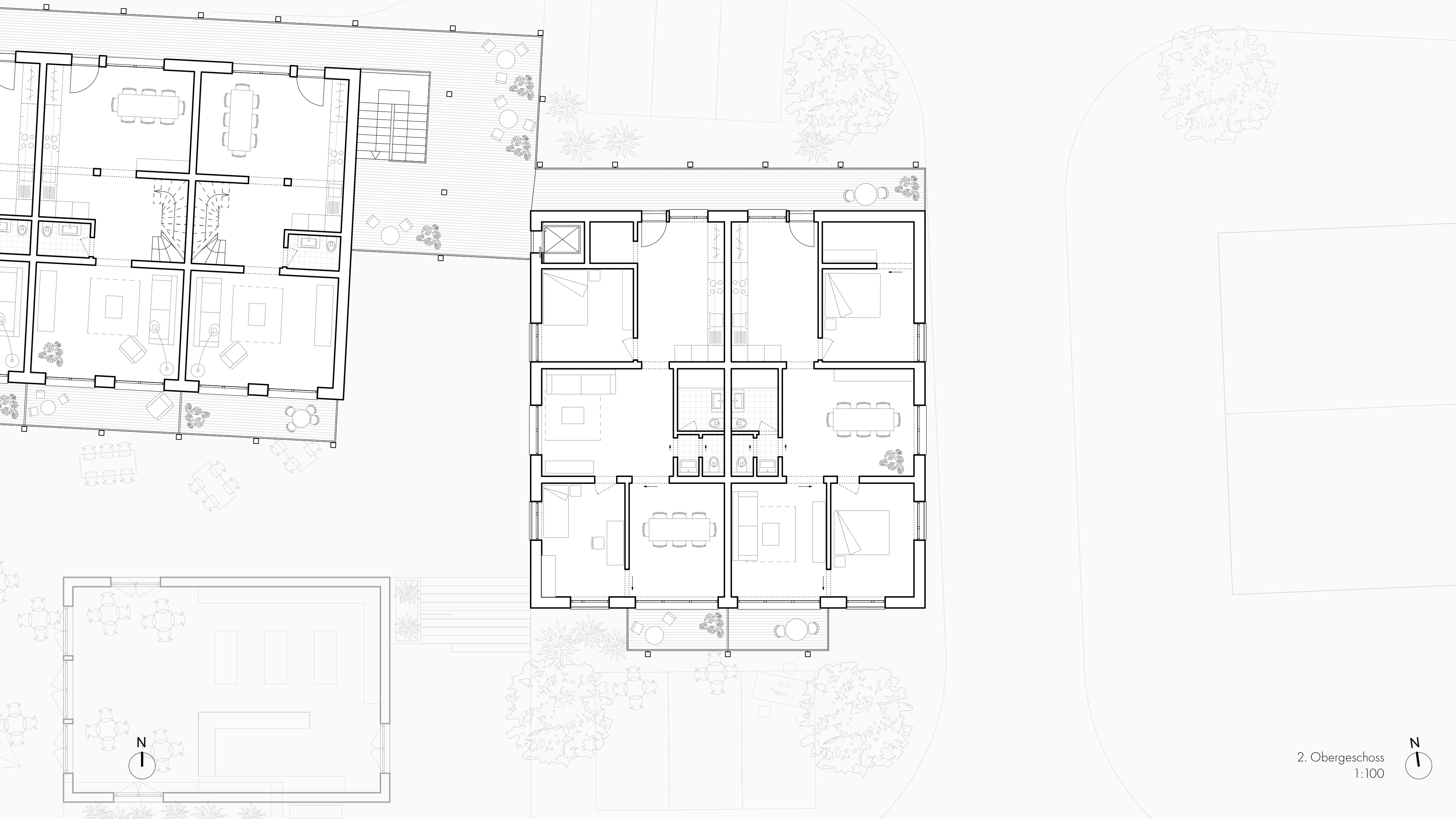




1. Obergeschoss  
1:100



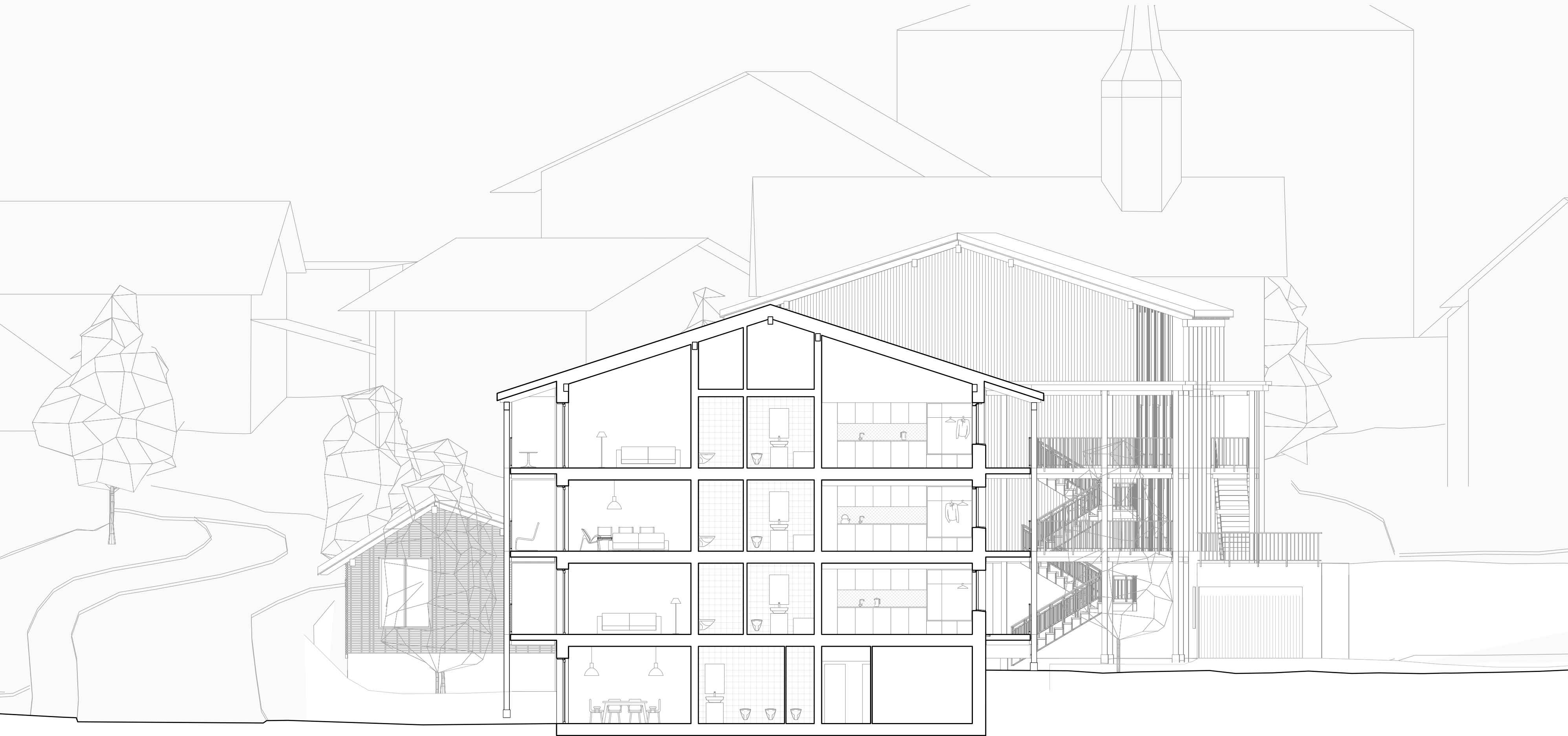




2. Obergeschoss  
1:100















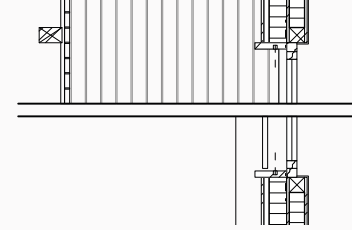
Ansicht Süd  
1:100



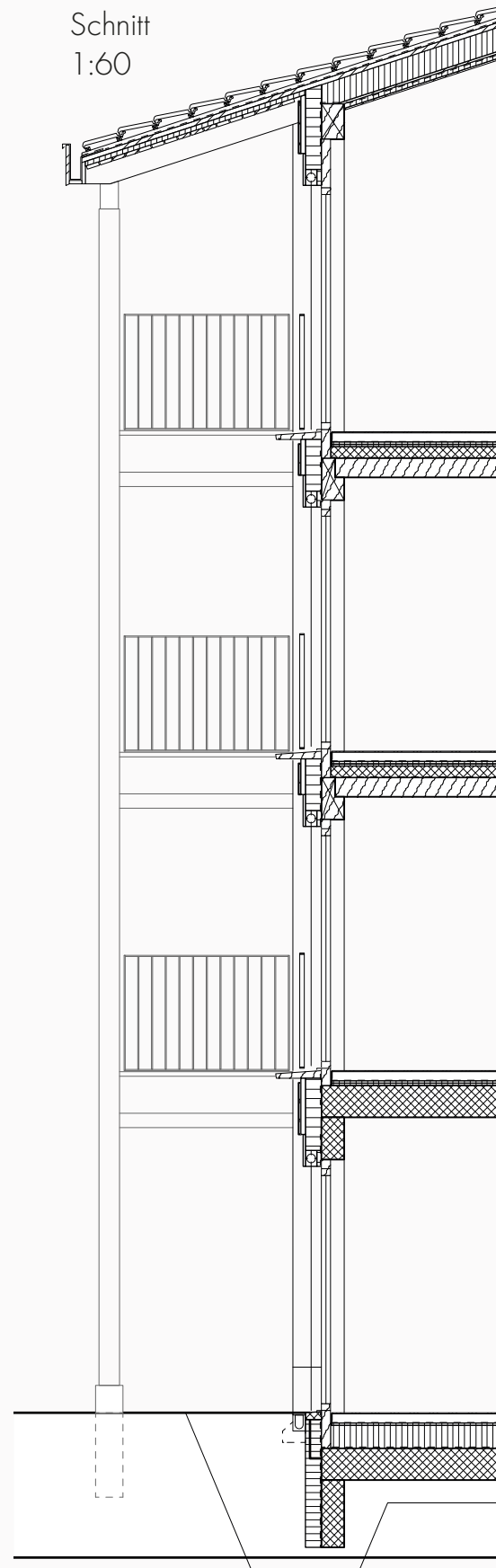
Ansicht 1:60



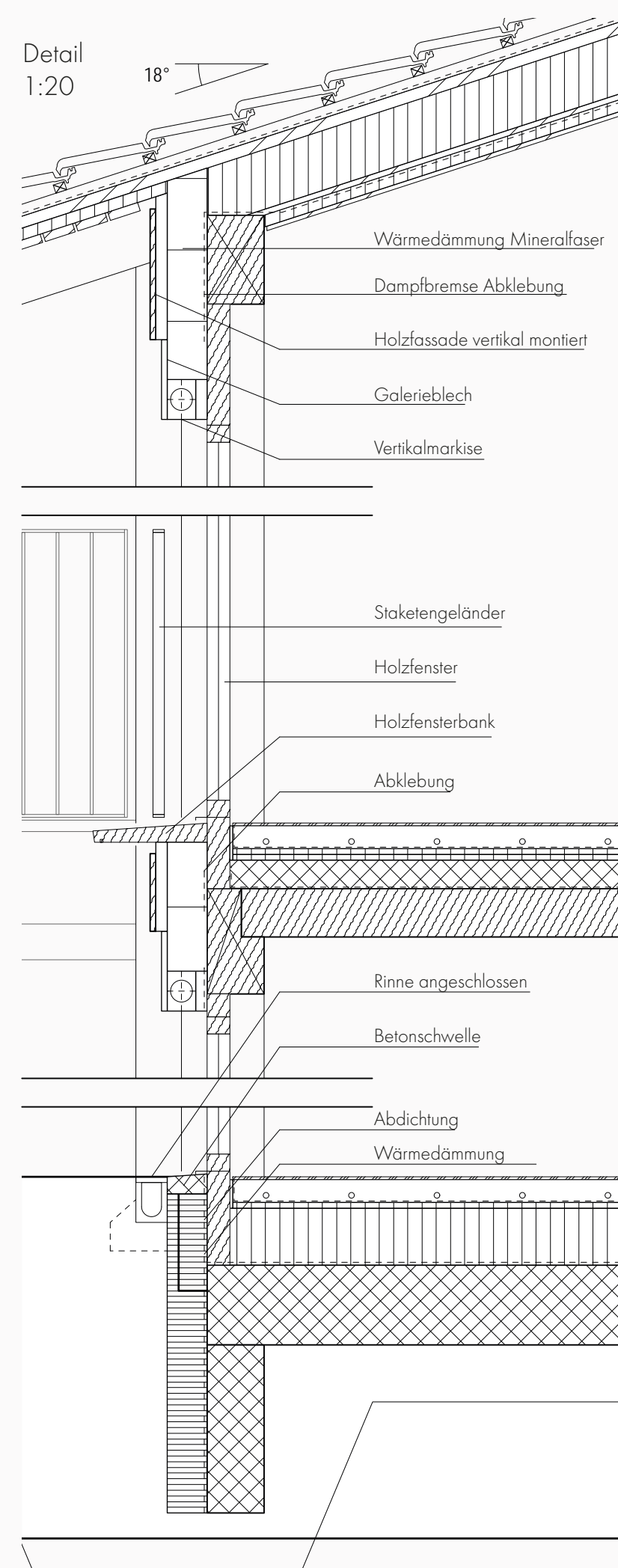
Grundriss 1:60



Schnitt  
1:60



Detail  
1:20



Konstruktionsbeschreibung

**Dachaufbau**

Dachziegel	Var.
Ziegellattung	2cm
Hinterlüftungslattung	4cm
Unterdachfolie	-
Holzfaserverplatte	4cm
Mineralfaserdämmung	24cm
Sparren HxB	24x12cm
Dreischichtplatte	2cm
Dampfbremse	-
Installationsraum ausgedämmt	4cm
Deckenbekleidung	2cm

**Wandaufbau**

Fassadenverkleidung	2cm
Hinterlüftung	4cm
Windpapier	-
Mineralfaserdämmung	16cm
Dreischichtplatte	2cm
Mineralfaserdämmung	12cm
Holzstütze	12x12cm
OSB-Platte (Dampfbremse)	2cm
Abrieb	1cm

**Bodenaufbau Regelgeschoss**

Bodenbelag	1cm
Unterlagsboden mit Bodenheizung	8cm
PE-Folie	-
Trittschalldämmung	2cm
Wärmedämmung	2cm
Überbeton	10cm
Brettstapeldecke	17cm

**Bodenaufbau Untergeschoss**

Bodenbelag	1cm
Unterlagsboden mit Bodenheizung	8cm
PE-Folie	-
Trittschalldämmung	2cm
Wärmedämmung	20cm
Betonbodenplatte	28cm
Magerbeton	10cm





Detail Laube 1:20

